

DJ SUB-SUBMINIATURE SWITCH

DJ sub-subminiature switch

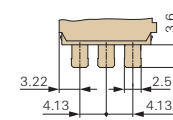
Sealed switch up to IP67, suitable for actuations at angles up to 40° depending on slide partner material, etc.

- Easy installation thanks to connector pins or fastening nut
- Smallest dimensions
- Models available for up to 85°C operating temperature
- Nominal currents 5 mA to 2 A at 12 V DC
- High contact stability with AuAg crosspoint contacts
- Mechanical operating life min. 500,000 operations
- Many connection possibilities, also with leads

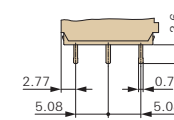


Terminals

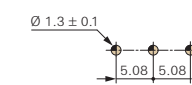
Solder terminal
2.5 x 0.5 mm



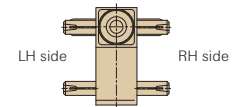
PCB terminal, straight
0.7 x 0.5 mm



Drilling pattern for PCB
terminal 0.7 x 0.5 mm

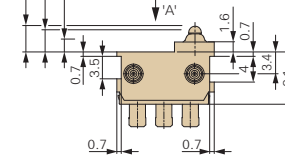


Side definition

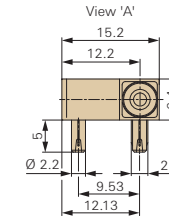


Dimensions in mm

Rest position max. 4.1
Operating point 3.45 ± 0.2
End position min. 2.05



Dimensions in mm



Technical specifications

Series	DJ ①
Contact configuration	S.P.D.T.
Contact gap	< 3 mm
Switching voltage (max.)	12 VDC up to 60 V on request
Switching current	0.005 to 2 A DC
Operating force	Max. 120 cN
Total travel	Approx. 2.0 mm
Mechanical life	Min. 500,000 operations
Electrical life (max. load)	Min. 100,000 operations
Ambient temperature	-40 to +85°C

Materials

Base	PBT/PES
Cover	PBT + ASA
Actuator	POM
Sealing gasket	VMQ
Terminals	CuZn silver-plated
Contacts	AuAg (Crosspoint)
Degree of protection	IP67
Switch interior	

Electrical rating ②

Model	Code
0.005 – 2 A DC, 12 V	1

Circuitry ③

Model	Code
S.P.D.T.	G

Terminal type ④

Model	Code
Solder terminal, straight, 2.5 x 0.5 mm, w/o location pins	AN
Solder terminal, straight, 2.5 x 0.5 mm, RH side location pins	AR
Solder terminal, straight, 2.5 x 0.5 mm, LH side location pins	AL
PCB terminal, straight, 0.7 x 0.5 mm, w/o location pins	BN
PCB terminal, straight, 0.7 x 0.5 mm, mit RH side loc. pins	BR
PCB terminal, straight, 0.7 x 0.5 mm, mit LH side loc. pins	BL

Auxiliary actuator ⑤

Model	Code
Without auxiliary actuator	A0

Generation of order code (example)
The order code consists of 5 parameters:

①	②	③	④	⑤
Series	Electrical rating	Circuitry	Terminal type	Auxiliary actuator
DJ = sub-sub-miniature switch	1 = 0.005–2 A DC, 12 V	G = S.P.D.T.	AN = Solder terminal, straight 2.5 x 0.5 w/o location pins	A0 = without auxiliary actuator

- Not every configurable variant is available for order. Please contact us.
- The final two digits of article numbers on commercial documents refer to the index of the respective drawing.

