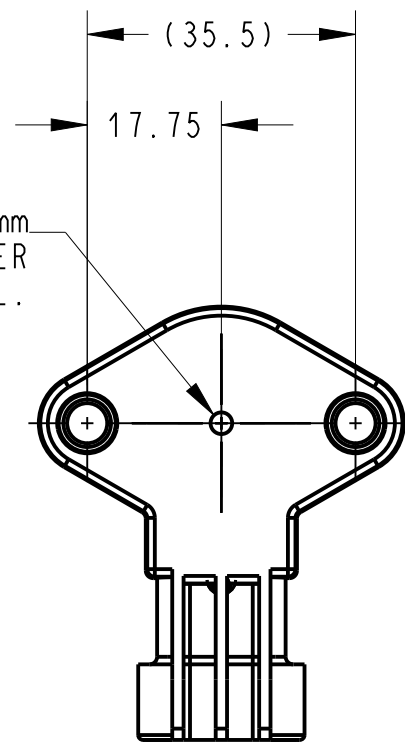
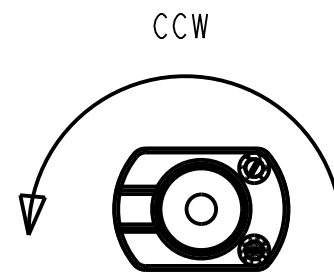


Ø 2mm
MAGNET CARRIER
ASSEMBLY TOL.

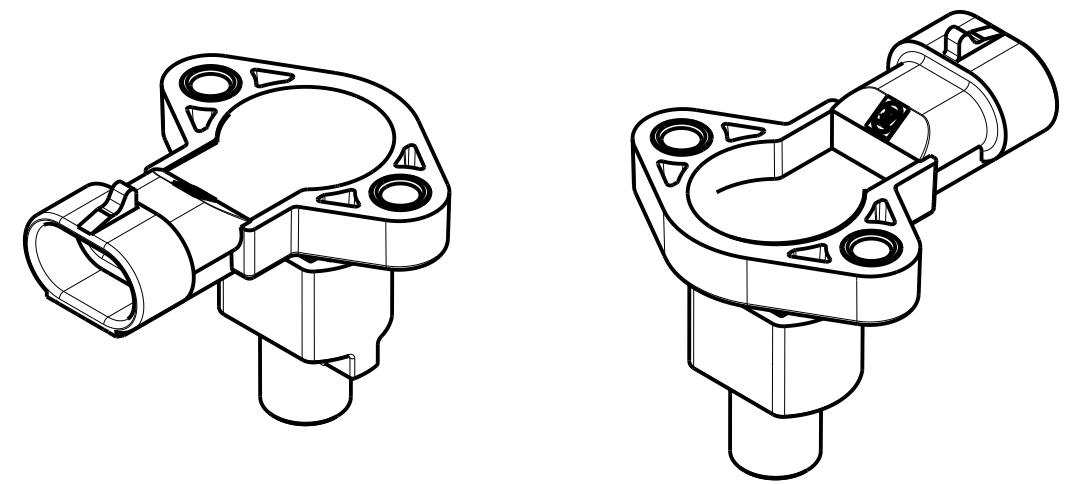


SENSING SIDE

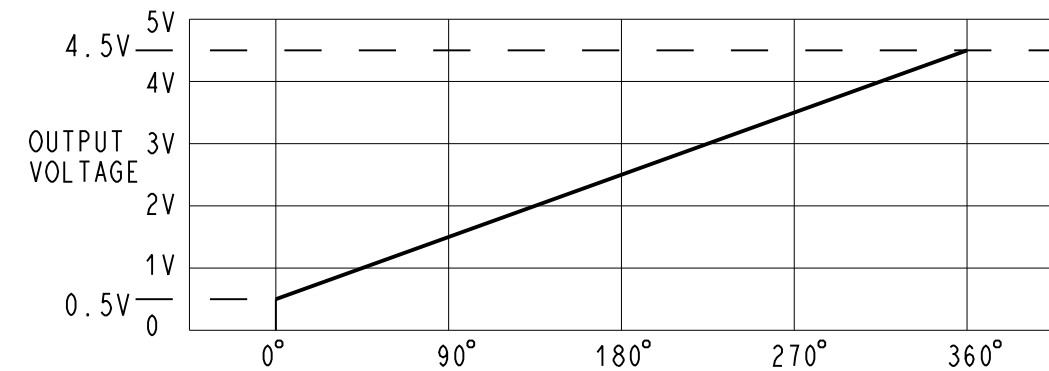


MAGNET CARRIER AS500106
0 DEGREE POSITION

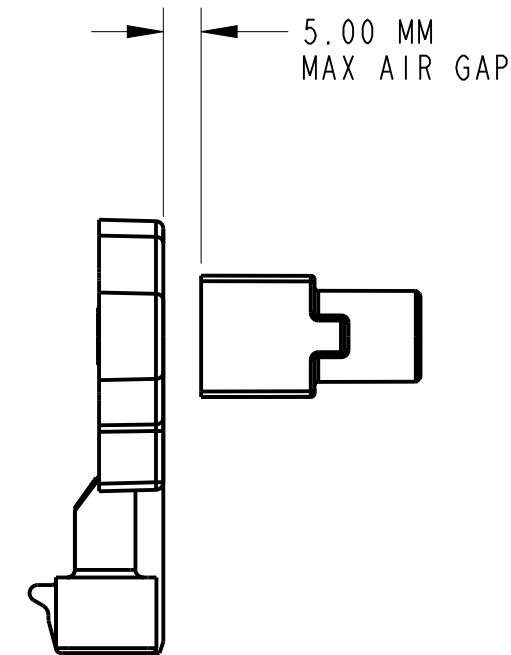
DETAIL A
SCALE 1:1



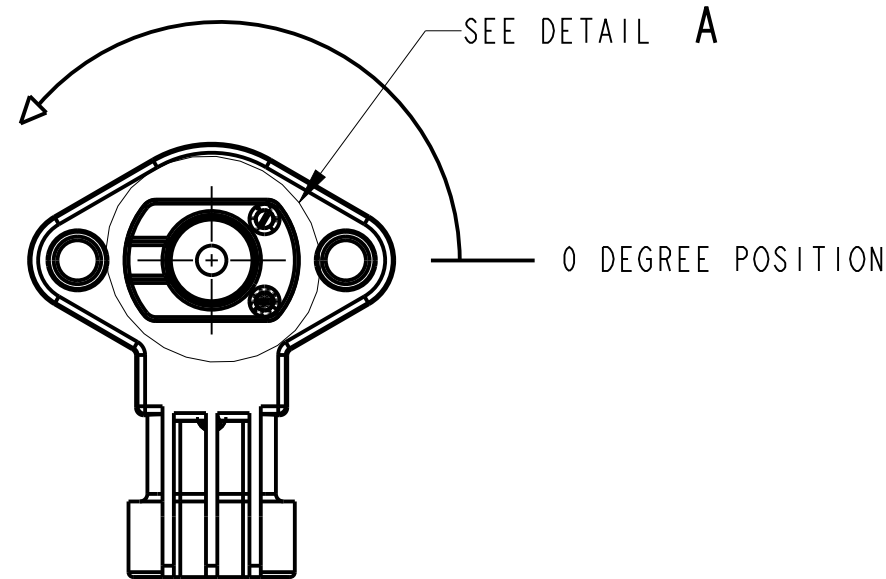
**SENSOR OUTPUT GRAPH
FROM 0 TO 360°**



ROTATION ANGLE
SENSOR OUTPUT SIGNAL
(TYPICAL BASED ON 5V SUPPLY)



5.00 MM
MAX AIR GAP

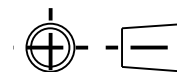


SEE DETAIL A

0 DEGREE POSITION

DWN: HCH
APVD: TKO
DATE: 26-Jan-07

THIRD ANGLE PROJECTION



PROJECT/ CSR
N/A

CONFIDENTIAL AND PROPRIETARY:
ALL INFORMATION OR INVENTIONS CONTAINED IN THIS
DOCUMENT OR DERIVED FROM THE INFORMATION THERE
IN IS OWNED BY ZF ELECTRONIC SYSTEMS, AND IS
CONFIDENTIAL AND PROPRIETARY. REVIEW OR
POSSESSION OF THIS DOCUMENT INDICATES AGREEMENT
THAT SUCH INFORMATION AND INVENTIONS WILL NOT BE
DISCLOSED, REPRODUCED OR OTHERWISE USED IN ANY
WAY WITHOUT EXPRESS WRITTEN PERMISSION FROM AN
AUTHORIZED REPRESENTATIVE OF ZF ELECTRONIC
SYSTEMS.

TOLERANCE UNLESS SPECIFIED

DWG UNITS	X.XX	X.XXX	ANGLES
MM	± 0.30	± 0.100	± 1.0°

F



ZF Electronic Systems

PLEASANT PRAIRIE, WISCONSIN U.S.A.

NAME / DESCRIPTION

AN820002 + AS500106 KIT

B ITEM NO. CU103602

SCALE: 1:1 SH 1 OF 1

F	Z000556881	2020-08-04	RJC	TB
REV	ECO NO.	DATE	PREP	APVD

ORIGINAL ON PRO/E