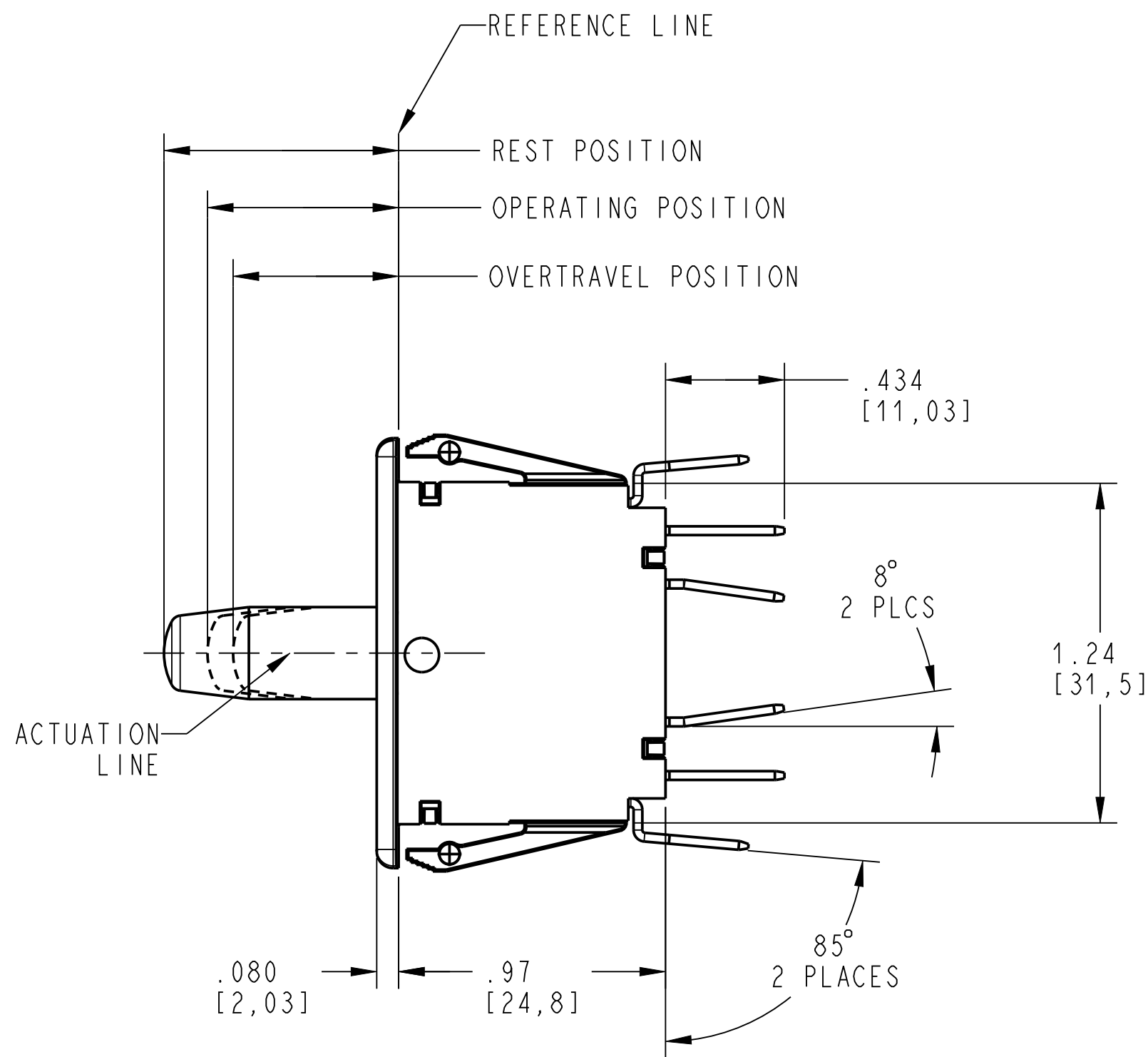
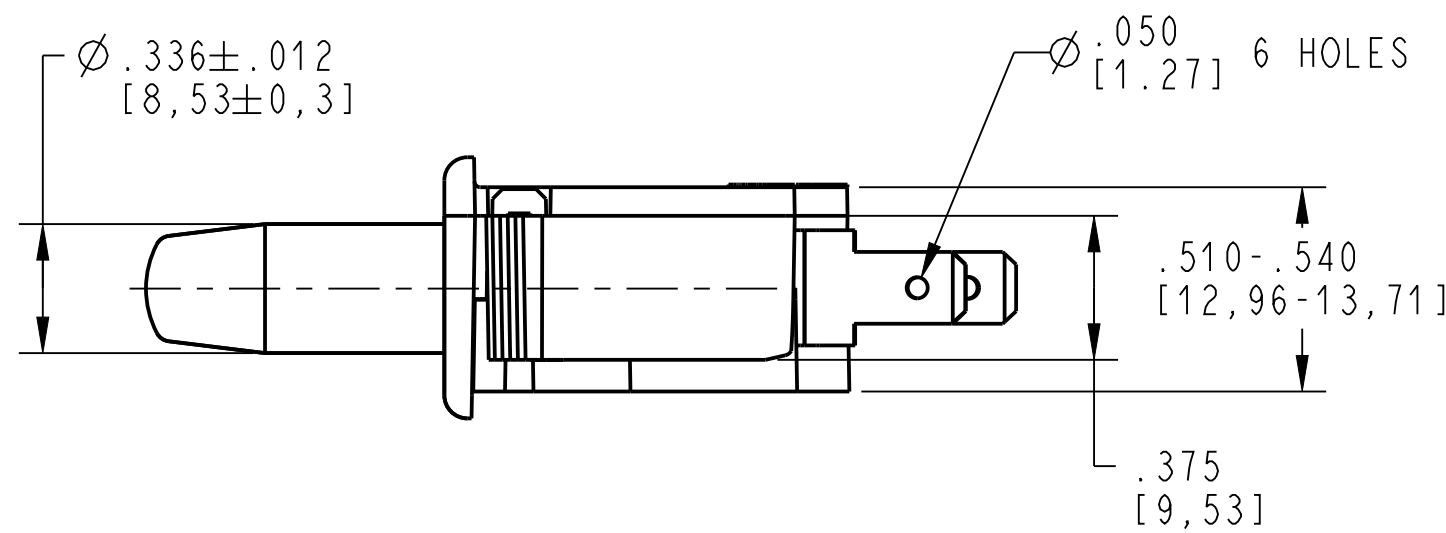
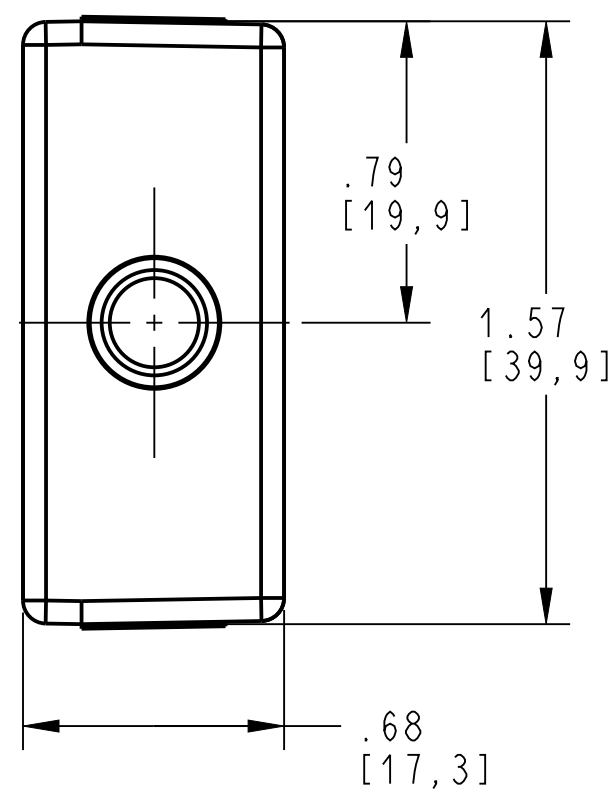


PANEL CUTOUT DETAIL  
RECOMMENDED  
PANEL THICKNESS  
.045 - .100  
[1.14]- [2.54]



NOTES: (UNLESS OTHERWISE SPECIFIED)

- SWITCH CHARACTERISTICS:  
REST POSITION: .845 [21,46] TO .905 [22,99]  
PRETRAVEL: .125 [3,18] MAX.  
OPERATING POSITION: .720 [18,29] TO .820 [20,83]  
OVER-TRAVEL: .375 [9,53] MIN.  
MOVEMENT DIFFERENTIAL: .075 [1,91] MAX  
OPERATING FORCE grams 680 MAX.  
RELEASE FORCE grams 170 MIN.

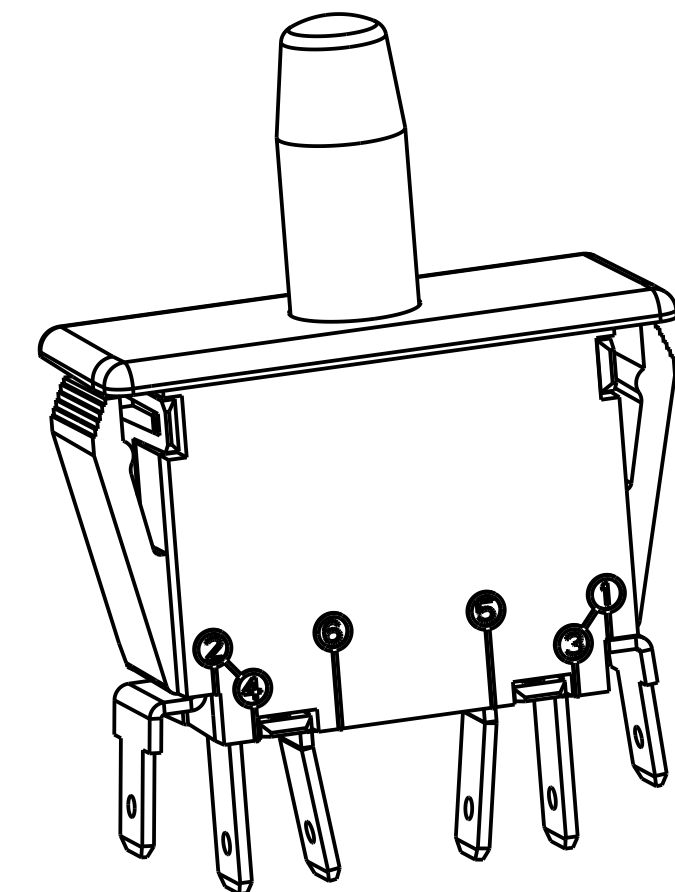
BUTTON POSITION  
AT FULL OVERTRAVEL .358 [9,09] MAX.

ALL CHARACTERISTICS ARE TAKEN AT THE ACTUATION LINE AND MEASURED FROM THE REFERENCE LINE.

- ELECTRICAL RATING:  
10 A, 125/250 VAC  
1/3HP, 125/250 VAC.

(K) 10(4) A 250V, 50E3, 40T85.

- TERMINALS:  
ARE .187 WIDTH x .032 THICKNESS.
- RECOGNIZED TO U.S. AND CANADIAN REQUIREMENTS UNDER THE COMPONENT RECOGNITION PROGRAM OF UNDERWRITERS LABORATORIES, INC.
- TEMPERATURE RATINGS: -40°C TO 85°C
- COLORS:  
FACEPLATE: WHITE  
COVER: WHITE  
BUTTON: WHITE



DWN: T. KULACK		CONFIDENTIAL AND PROPRIETARY: ALL INFORMATION OR INVENTIONS CONTAINED IN THIS DOCUMENT OR DERIVED FROM THE INFORMATION THEREIN IS OWNED BY ZF ELECTRONIC SYSTEMS, AND IS CONFIDENTIAL AND PROPRIETARY. REVIEW OR POSSESSION OF THIS DOCUMENT INDICATES AGREEMENT THAT SUCH INFORMATION AND INVENTIONS WILL NOT BE DISCLOSED, REPRODUCED OR OTHERWISE USED IN ANY WAY WITHOUT EXPRESS WRITTEN PERMISSION FROM AN AUTHORIZED REPRESENTATIVE OF ZF ELECTRONIC SYSTEMS.		ZF Electronic Systems PLEASANT PRAIRIE, WISCONSIN U.S.A.	
APVD: BEB		THIRD ANGLE PROJECTION 		SPECIFICATION DRAWING	
DATE: 2013-09-25		TOLERANCE UNLESS SPECIFIED		C ITEM NO. OF79-00A0	
PROJECT/ CSR		DWG UNITS	X.XX	X.XXX	ANGLES
4000000138		INCH/MM	± 0.02	± 0.015	± 5.0 °
SCALE: 2:1		SH 1 OF 1			

K	Z000714808	2023-11-30	TCH	ELL
REV	ECO NO.	DATE	PREP	APVD

ORIGINAL ON PROJE