

8 7 6 5 4 3 2 1

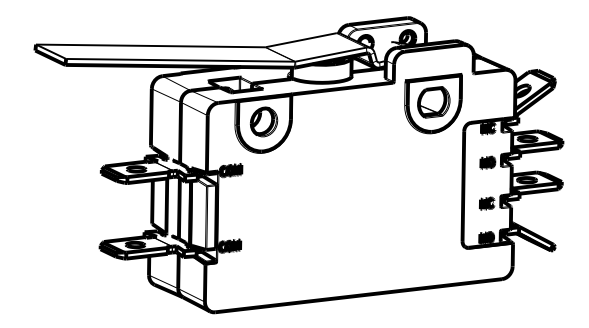
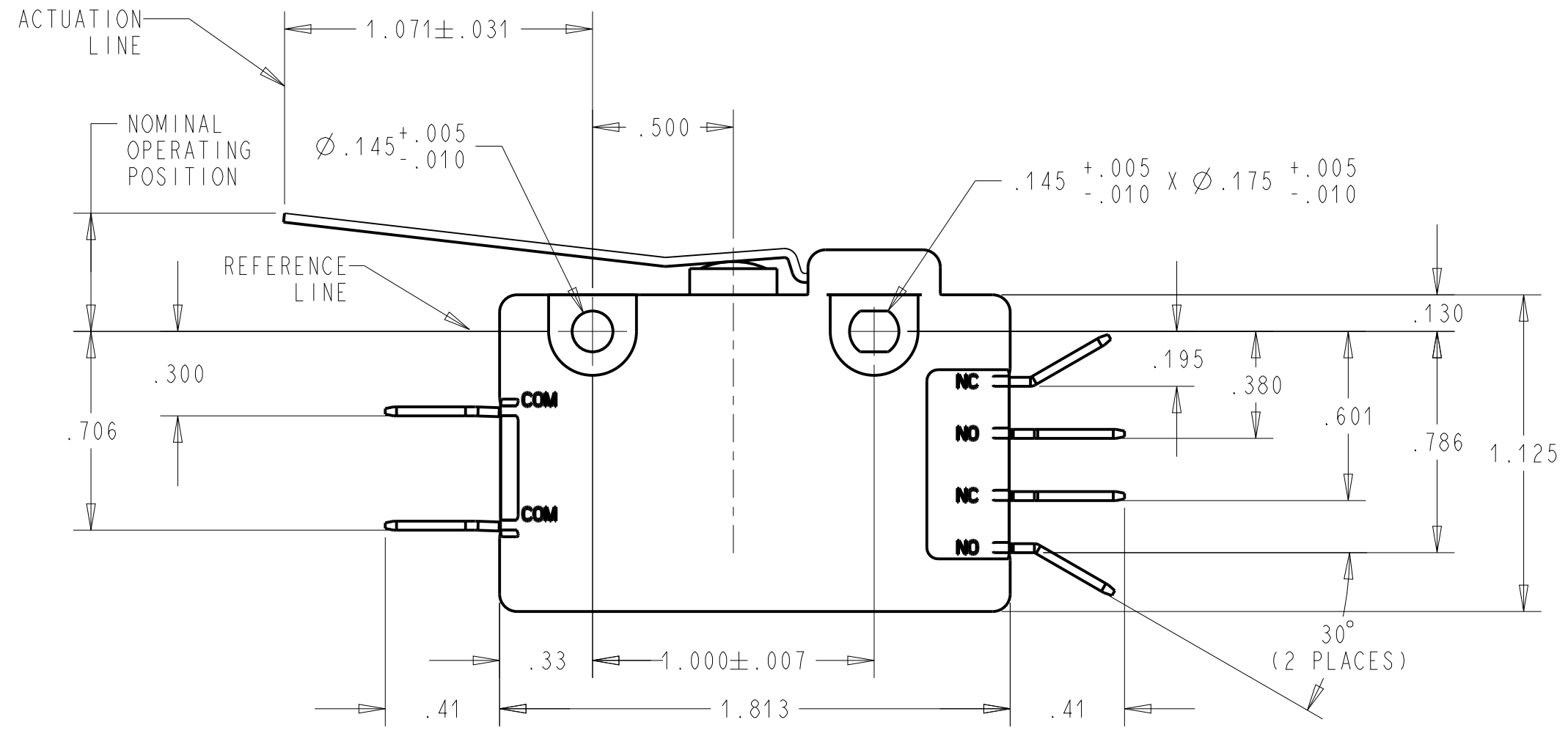
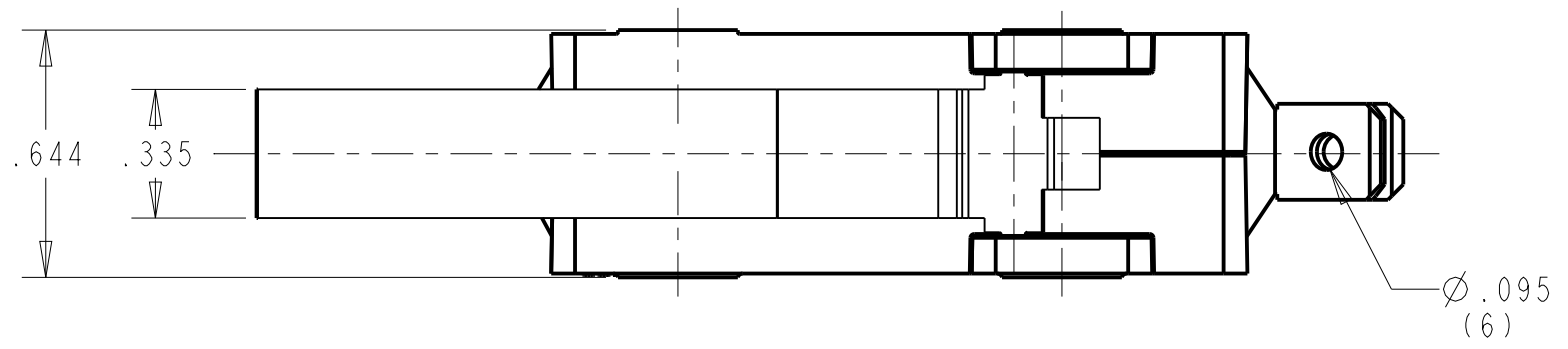
NOTES UNLESS OTHERWISE SPECIFIED:

- *SWITCH CHARACTERISTICS

REST POSITION	1.024 MAX.
PRE-TRAVEL	.600 MAX.
OPERATING POSITION	.375 TO .499
OVER TRAVEL	.156 MIN.
MOVEMENT DIFF. EACH POLE	.080 MAX.
OPERATING FORCE grams	283 MAX.
RELEASE FORCE grams	28 MIN.

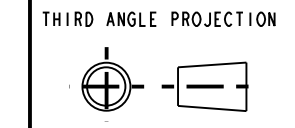
ALL CHARACTERISTICS ARE TAKEN AT THE ACTUATION LINE AND MEASURED FROM THE REFERENCE LINE.

- us** ELECTRICAL RATING
20A, 125/250 VAC
1 HP, 125VAC
2 HP, 250VAC
- TERMINALS ARE: .250 WIDE x .032 THICK.
- TEMPERATURE RATING: -40° TO 105°C.
- RECOGNIZED TO U.S. AND CANADIAN REQUIREMENTS UNDER THE COMPONENT RECOGNITION PROGRAM OF UNDERWRITERS LABORATORIES, INC.



SHOWN IN A NON CLINCHED STATE
SCALE 1.000

DWN: TLM
APVD: RY
DATE: 13-May-08



CONFIDENTIAL AND PROPRIETARY:
ALL INFORMATION OR INVENTIONS CONTAINED IN THIS DOCUMENT OR DERIVED FROM THE INFORMATION THEREIN IS OWNED BY ZF ELECTRONIC SYSTEMS, AND IS CONFIDENTIAL AND PROPRIETARY. REVIEW OR POSSESSION OF THIS DOCUMENT INDICATES AGREEMENT THAT SUCH INFORMATION AND INVENTIONS WILL NOT BE DISCLOSED, REPRODUCED OR OTHERWISE USED IN ANY WAY WITHOUT EXPRESS WRITTEN PERMISSION FROM AN AUTHORIZED REPRESENTATIVE OF ZF ELECTRONIC SYSTEMS.



ZF Electronic Systems

11200 88th AVE. PLEASANT PRAIRIE, WI 53158

NAME / DESCRIPTION
SPECIFICATION DRAWING

C	Z000371638	25-Jul-16	JPD	ELL
REV	ECO NO.	DATE	PREP	APVD

PROJECT/ CSR
4000000138

TOLERANCE UNLESS SPECIFIED			
DWG UNITS	X.XX	X.XXX	ANGLES
INCHES	± 0.02	± 0.015	± 5.0°

B ITEM NO. 0E20-50H0
SCALE: 2.000 SH 1 OF 1

8 7 6 5 4 3 2 1

ORIGINAL ON PRO/E