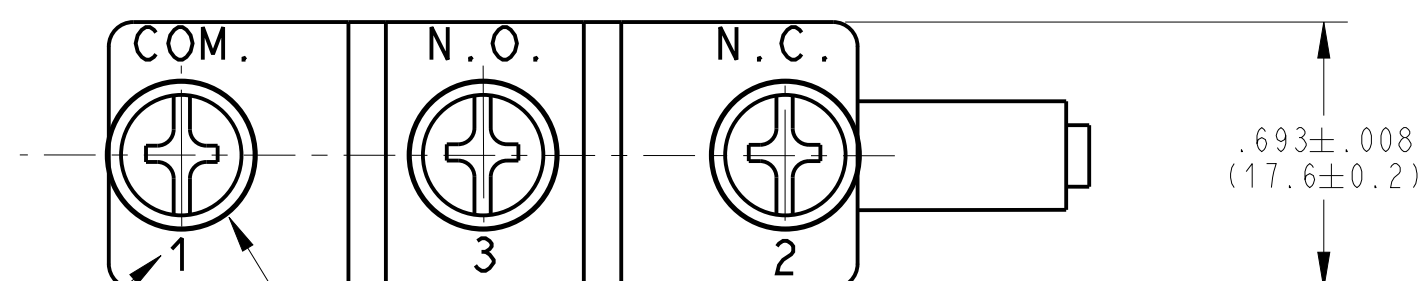


NOTES (UNLESS OTHERWISE SPECIFIED): (E)

- 1 RECOMMENDED MOUNTING:
#6-32 FASTENER WITH 6.00 IN-LB [7.00 KGF-CM] OF TORQUE MAX.
- 2 RECOGNIZED TO U.S. AND CANADIAN REQUIREMENTS UNDER THE COMPONENT RECOGNITION PROGRAM OF UNDERWRITERS LABORATORIES, INC.
- 3 ALL CHARACTERISTICS ARE TAKEN AT THE ACTUATION LINE AND MEASURED FROM THE REFERENCE LINE.
- 4 FOR MARKING AND NAMING SPECIFICATIONS SEE ES021295.

CHARACTERISTICS (E)

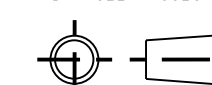
ELECTRICAL RATING	15A 250VAC (cULus) T55°C 15A 250V~ (VDE) -5T40
TERMINAL	SCREW
OPER. FORCE MAX.	100 GMS
RELEASE FORCE MIN.	22 GMS
PRETRAVEL MAX.	.280 [7.11 mm]
OVERTRAVEL MIN.	.158 [4.0 mm]
MOVE. DIFF. MAX.	.040 [1.02 mm]
OPERATING POSITION	1.157 TO 1.220 [29.4 TO 31.0 mm]



TERMINAL CALL-OUTS MAY ALSO BE LISTED NUMERICALLY

3 - M4 X 4.9 mm
TERMINAL SCREW AND
INTERNAL TOOTHED
LOCK WASHER

DWN: JED
APVD: SG
DATE: 28-FEB-05
THIRD ANGLE PROJECTION



CONFIDENTIAL AND PROPRIETARY:
ALL INFORMATION OR INVENTIONS CONTAINED IN THIS DOCUMENT OR DERIVED FROM THE INFORMATION THEREIN IS OWNED BY ZF ELECTRONIC SYSTEMS, AND IS CONFIDENTIAL AND PROPRIETARY. REVIEW OR POSSESSION OF THIS DOCUMENT INDICATES AGREEMENT THAT SUCH INFORMATION AND INVENTIONS WILL NOT BE DISCLOSED, REPRODUCED OR OTHERWISE USED IN ANY WAY WITHOUT EXPRESS WRITTEN PERMISSION FROM AN AUTHORIZED REPRESENTATIVE OF ZF ELECTRONIC SYSTEMS.



11200 88th AVE. PLEASANT PRAIRIE, WI 53158

NAME / DESCRIPTION
SPEC DRAWING

E	Z000360155	2016-04-26	TLM	ELL
REV	ECO NO.	DATE	PREP	APVD

PROJECT/ CSR	DWG UNITS	X.XX	X.XXX	ANGLES
4000000138	INCHES	± .02	± .015	± 5 °

C	ITEM NO.	GPTCRS11
SCALE:	2:1	SH 1 OF 1

ORIGINAL ON PRO/E (E)