

# Ultraminiature Switch



## DH series

### Features

- Dimensions only 8.4 mm x 2.7 mm x 6.55 mm
- Designed for low switching currents and voltages
- Available with or without auxiliary actuator
- Solder connection or use lying or standing on a circuit board

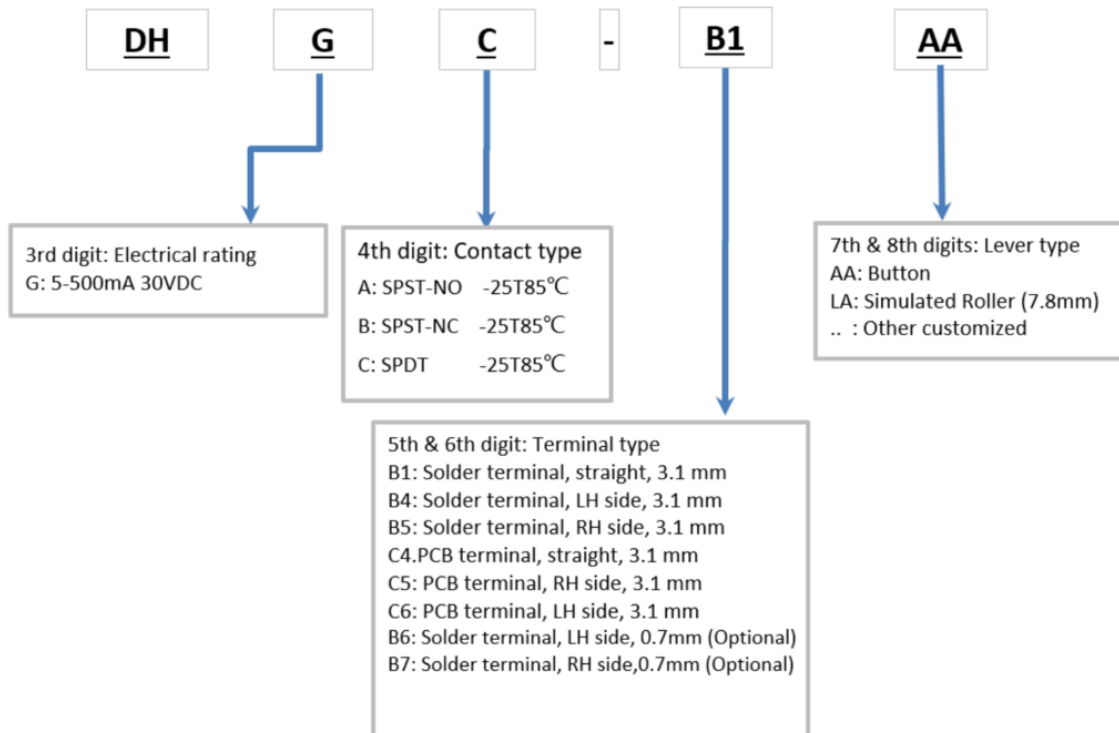
### Standard parts<sup>1</sup>

DHGC-B1AA    DHGC-B1LA    DHGC-B4LA    DHGC-C6LA    DHGC-B5LA    DHGC-C4AA  
DHGC-C5AA    DHGC-C5LA    DHGC-C6AA    DHGC-C4LA

<sup>1</sup>The part number configuration matrix below provides details to the part numbers above.

For configurable part numbers that are not listed above, not listed in your region, or for custom part numbers, contact the factory or your distributor.

### Type Reference Matrix



## Materials

Housing	PPA
Cover	PA
Actuator	PBT
Auxiliary actuator	PA46
Terminals	Silver Plate Brass
Contacts	Au Alloy
Degree of protection switch interior	IP40

## Technical specifications

Contact configuration	S.P.D.T
Contact gap	< 3 mm
Switching voltage max.	30 V DC
Switching current	5 to 500 mA DC
Electrical life (max. load)	> 30,000 operations
Operating force	max. 90 cN
Mechanical life	> 50,000 operations
Total travel	Max. 0.8 mm without auxiliary actuator
Ambient temperature	-25 °C to + 85 °C

## Electrical rating

Electrical rating	Operating life		
	at nominal load	mechanical	Code
5 – 500 mA 30 VDC	30,000	50,000	G

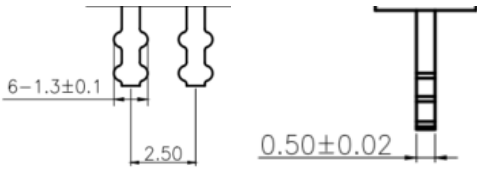
## Dimensions in mm

Terminals

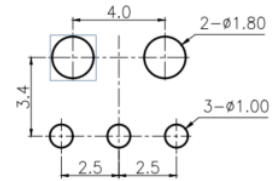
<https://switches-sensors.zf.com>



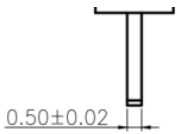
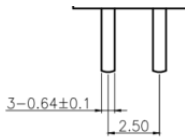
Solder terminal



Drilling pattern

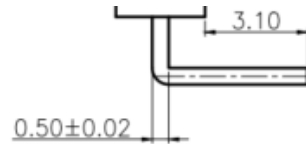
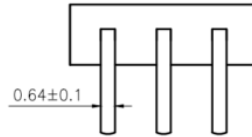
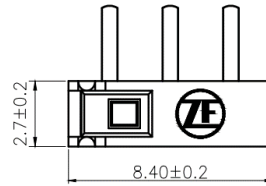


PCB terminal straight

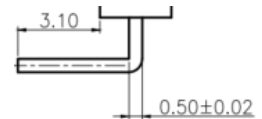
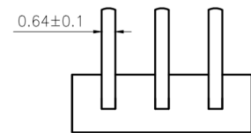
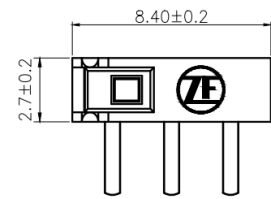


PCB terminal

RH side



LH side



Auxiliary actuator (plastic)

