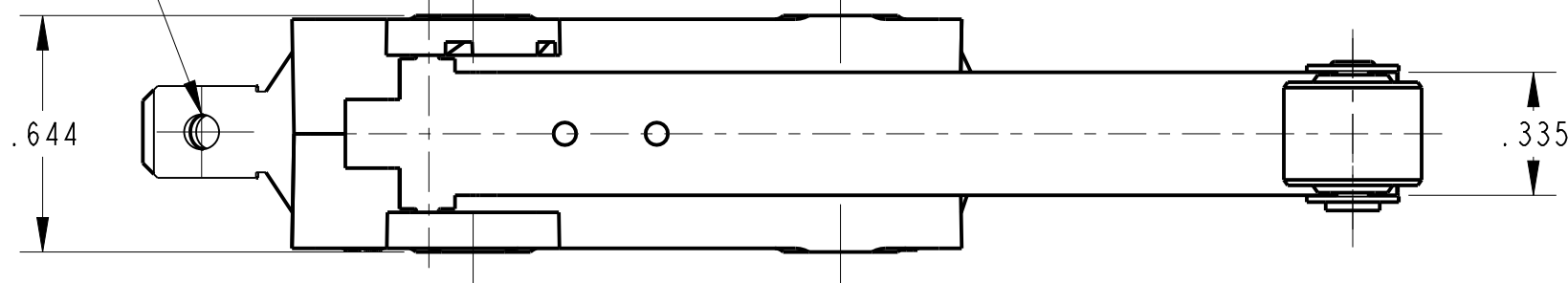


Ø .095
3 PLACES

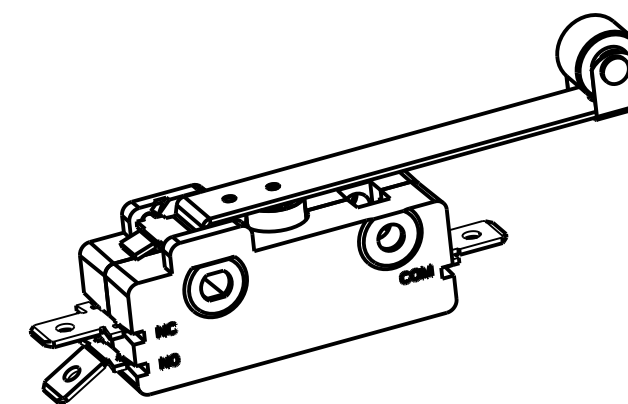
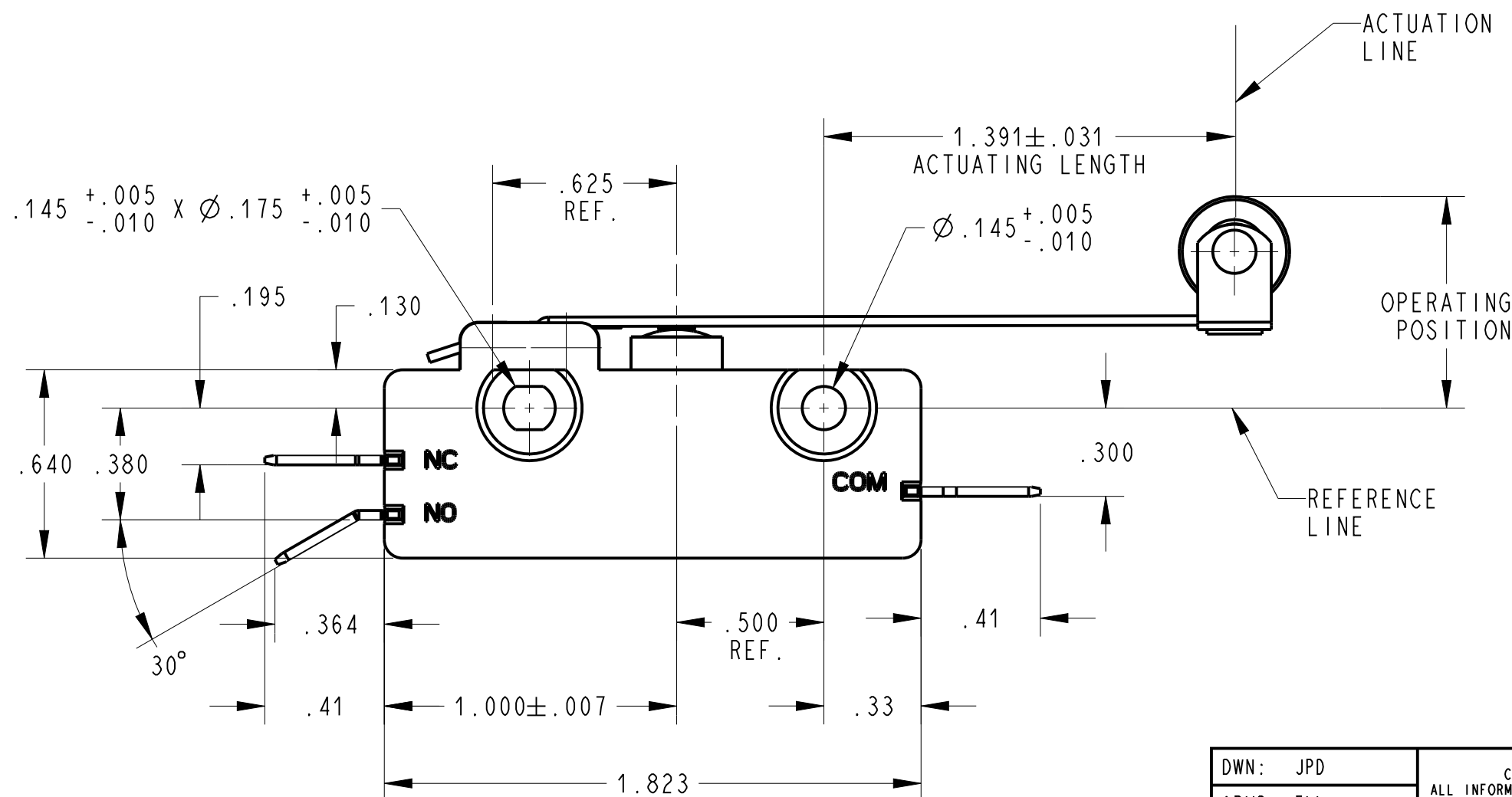


NOTES (UNLESS OTHERWISE SPECIFIED):

- SWITCH CHARACTERISTICS
PRE-TRAVEL .250 MAX.
OPERATING POSITION .656 TO .780
OVER TRAVEL .187 MIN.
MOVEMENT DIFF. .062 MAX.
OPERATING FORCE grams 100 MAX.
RELEASE FORCE grams 14 MIN.

ALL CHARACTERISTICS ARE TAKEN AT THE ACTUATION LINE AND MEASURED FROM THE REFERENCE LINE.

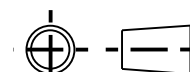
- us** ELECTRICAL RATING
15A, 125/250VAC; 3/4HP, 125VAC
1-1/2HP, 250VAC
2A, 48 VDC
- TERMINALS COMMON, N.C & N.O. ARE .250 WIDTH X .032 THICKNESS.
- RECOGNIZED TO U.S. AND CANADIAN REQUIREMENTS UNDER THE COMPONENT RECOGNITION PROGRAM OF UNDERWRITERS LABORATORIES. INC.
- TEMPERATURE RATINGS: -40°C TO +105°C



SHOWN IN A NON CLINCHED STATE
SCALE 1:1

DWN: JPD
APVD: ELL
DATE: 27-Feb-15

THIRD ANGLE PROJECTION



CONFIDENTIAL AND PROPRIETARY:
ALL INFORMATION OR INVENTIONS CONTAINED IN THIS DOCUMENT OR DERIVED FROM THE INFORMATION THEREIN IS OWNED BY ZF ELECTRONIC SYSTEMS, AND IS CONFIDENTIAL AND PROPRIETARY. REVIEW OR POSSESSION OF THIS DOCUMENT INDICATES AGREEMENT THAT SUCH INFORMATION AND INVENTIONS WILL NOT BE DISCLOSED, REPRODUCED OR OTHERWISE USED IN ANY WAY WITHOUT EXPRESS WRITTEN PERMISSION FROM AN AUTHORIZED REPRESENTATIVE OF ZF ELECTRONIC SYSTEMS.



ZF Electronic Systems

11200 88th AVE. PLEASANT PRAIRIE, WI 53158

NAME / DESCRIPTION

SPEC DRAWING

B ITEM NO. 0E13-00K0

SCALE: 2:1 SH 1 OF 1

E	Z000370093	30-Jun-16	JPD	ELL
REV	ECO NO.	DATE	PREP	APVD

PROJECT/ CSR
4000000138

TOLERANCE UNLESS SPECIFIED			
DWG UNITS	X.XX	X.XXX	ANGLES
INCH	± 0.02	± 0.015	± 5.0 °