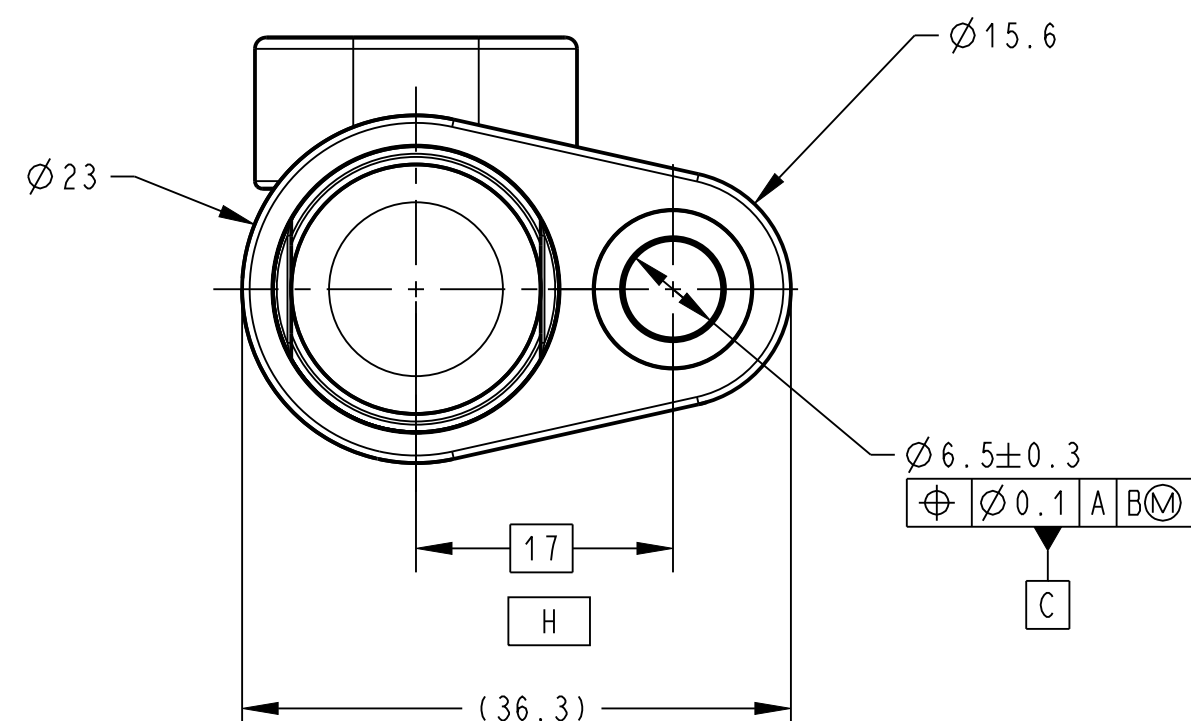


NOTES:



- RECOMMEND FASTENER:
M6 X 1 TORQUE 5.65Nm (50 in lbs)
1/4-20 TORQUE 5.65Nm (50 in lbs)
TORQUE VALUES MAY VARY WITH BOLT MATERIAL.
- ZF WRITTEN APPROVAL OF SENSOR APPLICATION/ENVIRONMENT IS REQUIRED BEFORE O-RING RESPONSIBILITY IS TAKEN.
- REFERENCE ZF PRODUCT SPECIFICATION (PSPEC-00071).
- THE FLAT AREAS LOCATED ON THE SIDES OF THE HOUSING BARREL ARE NOT IN A FIXED LOCATION FROM UNIT TO UNIT.
- OPERATING TEMPERATURE SHALL BE -40°C TO 140°C
150 °C OPERATION IS POSSIBLE BUT OPERATING CHARACTERISTICS WILL BE REDUCE (PSPEC-00071).
- SENSOR'S CONNECTOR TYPE: METRIC-PACK 150.
- MATING CONNECTOR :DELPHI 12162280.
- COMPONENTS MATERIAL:
A: FLANGE STANYL TW241F3 AND CAD260 1/2 HARD BRASS.
B: HOUSING STANYL TW241F3.
C: CONNECTOR STANYL TW241F3.
- HOUSING TO CONNECTOR ASSEMBLY TORQUE SHALL BE A MINIMUM OF 25 in.Lb.
- LASER MARK INFO:

MARCATION	DESCRIPTION
GS101205	ZF PART NUMBER
#### DDDYY	#### CONSECUTIVE SERIAL NUMBER DDD JULIAN DATE YY 2 DIGITS YEAR
MEXICO	COUNTRY OF ORIGIN

- INDICATES STATISTICAL PROCESS CONTROL #1 OR #2.
- INDICATES AN ITEM THAT MUST BE CHECKED AND RECORDED ON A HISTORY CARD. PER ZF QUALITY PROCEDURE #GP70007.



E	20719	28-MAY-11	CRM	BN
REV	ECO NO.	DATE	PREP	APVD

DWN: FJBH		CONFIDENTIAL AND PROPRIETARY: ALL INFORMATION OR INVENTIONS CONTAINED IN THIS DOCUMENT OR DERIVED FROM THE INFORMATION THERE IN IS OWNED BY ZF ELECTRONIC SYSTEMS, AND IS CONFIDENTIAL AND PROPRIETARY. REVIEW OR POSSESSION OF THIS DOCUMENT INDICATES AGREEMENT THAT SUCH INFORMATION AND INVENTIONS WILL NOT BE DISCLOSED, REPRODUCED OR OTHERWISE USED IN ANY WAY WITHOUT EXPRESS WRITTEN PERMISSION FROM AN AUTHORIZED REPRESENTATIVE OF ZF ELECTRONIC SYSTEMS.				 ZF Electronic Systems		
APVD: MQ								
DATE: 03-NOV-10						PLEASANT PRAIRIE, WISCONSIN U.S.A.		
THIRD ANGLE PROJECTION						NAME / DESCRIPTION		
		HT IRAC GS - 90°						
		TOLERANCE UNLESS SPECIFIED				C	ITEM NO.	GS101205
PROJECT/ CSR		DWG UNITS	X.XX	X.XXX	ANGLES			
D	N/A	MM	± 0.30	± 0.150	± 1.0 °	SCALE:	2:1	SH 1 OF 1