
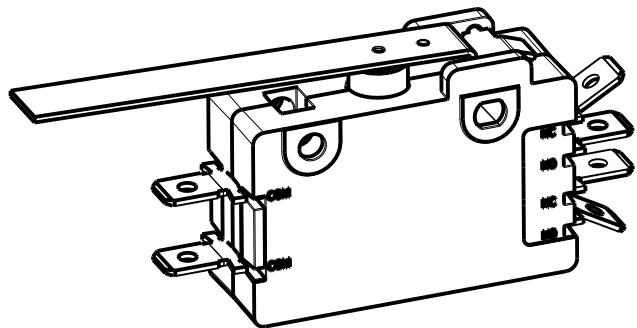
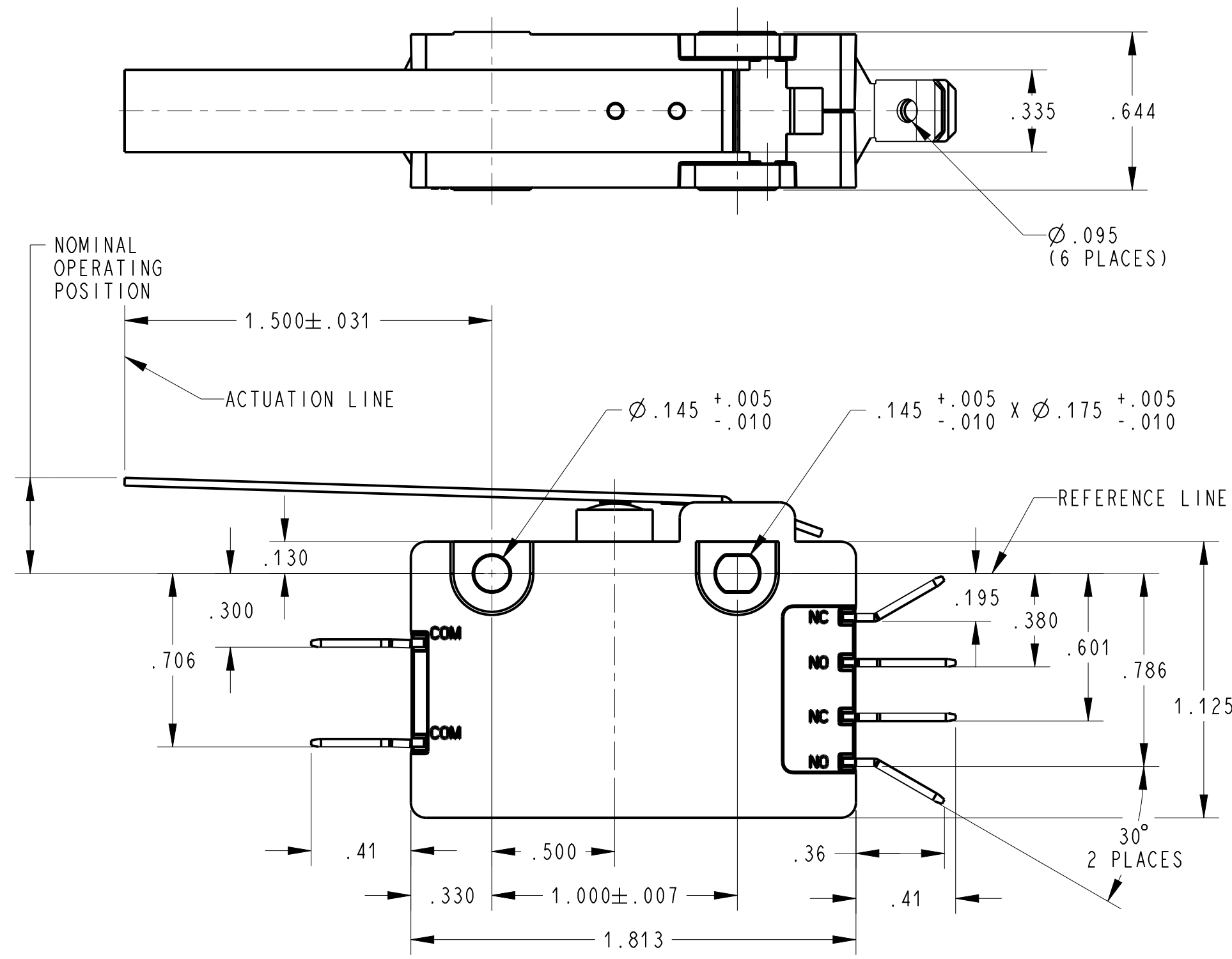

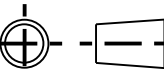


8 7 6 5 4 3 2 1

- NOTES (UNLESS OTHERWISE SPECIFIED):
1. *SWITCH CHARACTERISTICS
- | | |
|--------------------|-----------------------|
| PRE-TRAVEL | .275 MAX. |
| OPERATING POSITION | .250 MIN. / .374 MAX. |
| OVER TRAVEL | .100 MIN |
| MOVEMENT DIFF. | |
| EACH POLE | .093 MAX. |
| OPERATING FORCE | grams 205 MAX. |
| RELEASE FORCE | grams 40 MIN. |
- ALL CHARACTERISTICS ARE TAKEN AT THE ACTUATION LINE AND MEASURED FROM THE REFERENCE LINE.
2.  **us** ELECTRICAL RATING
- 15A, 125/250 VAC
3/4 HP, 125 VAC;
1-1/2 HP, 250 VAC;
3. RECOGNIZED TO U.S. AND CANADIAN REQUIREMENTS UNDER THE COMPONENT RECOGNITION PROGRAM OF UNDERWRITERS LABORATORIES, INC.
4. TEMPERATURE RATING: -40°C TO 105°C
5. TERMINALS ARE .250 WIDE X .032 THICK.



SHOWN IN A NON CLINCHED STATE
SCALE 1:1

DWN: TLM		 ZF Electronic Systems	
APVD: ELL			
DATE: 18-May-09			
THIRD ANGLE PROJECTION		11200 88th AVE. PLEASANT PRAIRIE, WI 53158	
		NAME / DESCRIPTION	
PROJECT/ CSR		SPECIFICATION DRAWING	
4000000138		B ITEM NO. 0E19-00H0	
TOLERANCE UNLESS SPECIFIED		SCALE: 2:1 SH 1 OF 1	
DWG UNITS X.XX X.XXX ANGLES			
INCHES ± 0.02 ± 0.015 ± 5.0 °			

C	Z000371636	25-Jul-16	JPD	ELL
REV	ECO NO.	DATE	PREP	APVD

8 7 6 5 4 3 2 1

ORIGINAL ON PRO/E