


8 7 6 5 4 3 2 1

NOTES (UNLESS OTHERWISE SPECIFIED):

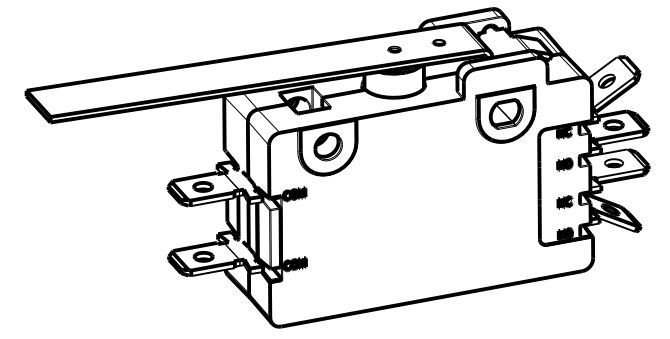
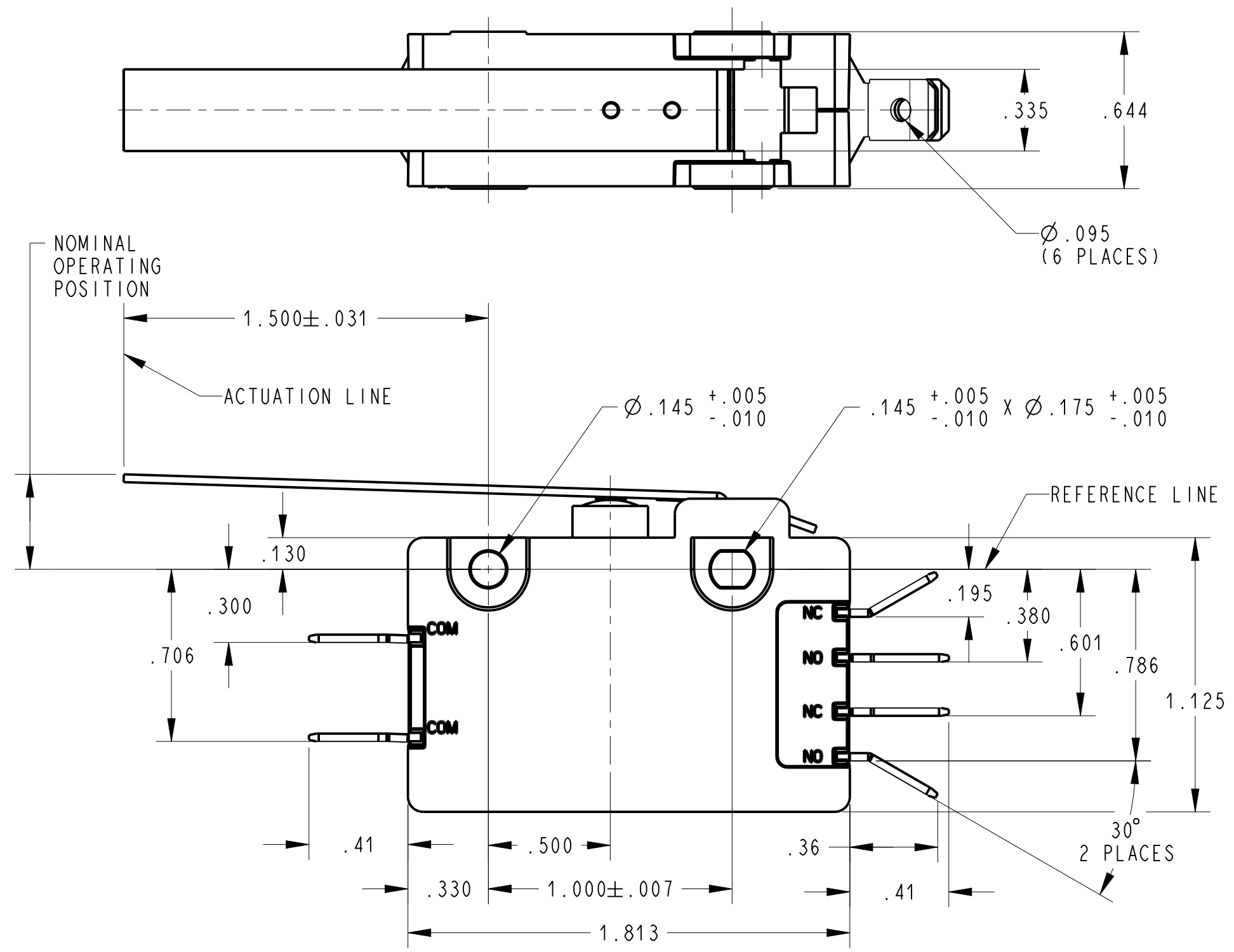
- \*SWITCH CHARACTERISTICS
 

PRE-TRAVEL	.275 MAX.
OPERATING POSITION	.250 MIN. / .374 MAX.
OVER TRAVEL	.100 MIN
MOVEMENT DIFF. EACH POLE	.093 MAX.
OPERATING FORCE	grams 205 MAX.
RELEASE FORCE	grams 40 MIN.

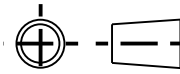
ALL CHARACTERISTICS ARE TAKEN AT THE ACTUATION LINE AND MEASURED FROM THE REFERENCE LINE.

-  us ELECTRICAL RATING
 

15A, 125/250 VAC
3/4 HP, 125 VAC;
1-1/2 HP, 250 VAC;
- RECOGNIZED TO U.S. AND CANADIAN REQUIREMENTS UNDER THE COMPONENT RECOGNITION PROGRAM OF UNDERWRITERS LABORATORIES, INC.
- TEMPERATURE RATING: -40°C TO 105°C
- TERMINALS ARE .250 WIDE X .032 THICK.



SHOWN IN A NON CLINCHED STATE  
SCALE 1:1

DWN: TLM
APVD: ELL
DATE: 18-May-09
THIRD ANGLE PROJECTION


CONFIDENTIAL AND PROPRIETARY:  
ALL INFORMATION OR INVENTIONS CONTAINED IN THIS DOCUMENT OR DERIVED FROM THE INFORMATION THEREIN IS OWNED BY ZF ELECTRONIC SYSTEMS, AND IS CONFIDENTIAL AND PROPRIETARY. REVIEW OR POSSESSION OF THIS DOCUMENT INDICATES AGREEMENT THAT SUCH INFORMATION AND INVENTIONS WILL NOT BE DISCLOSED, REPRODUCED OR OTHERWISE USED IN ANY WAY WITHOUT EXPRESS WRITTEN PERMISSION FROM AN AUTHORIZED REPRESENTATIVE OF ZF ELECTRONIC SYSTEMS.



ZF Electronic Systems

11200 88th AVE. PLEASANT PRAIRIE, WI 53158

NAME / DESCRIPTION  
**SPECIFICATION DRAWING**

C	Z000371636	25-Jul-16	JPD	ELL
REV	ECO NO.	DATE	PREP	APVD

PROJECT/ CSR  
4000000138

TOLERANCE UNLESS SPECIFIED			
DWG UNITS	X.XX	X.XXX	ANGLES
INCHES	± 0.02	± 0.015	± 5.0 °

B	ITEM NO.	0E19-00H0
SCALE:	2:1	SH 1 OF 1

8 7 6 5 4 3 2 1

ORIGINAL ON PRO/E