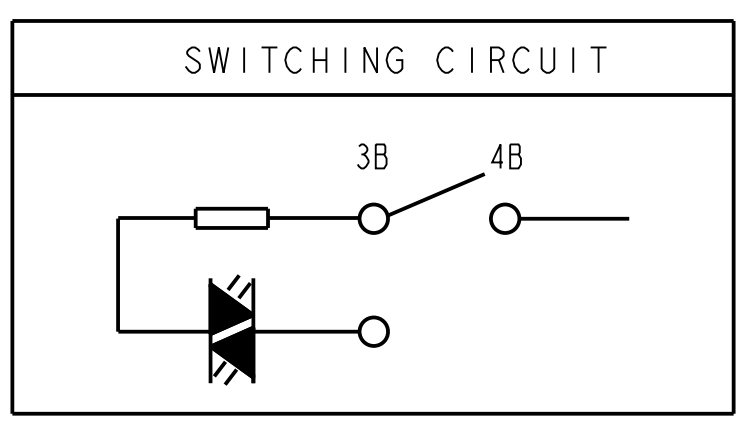
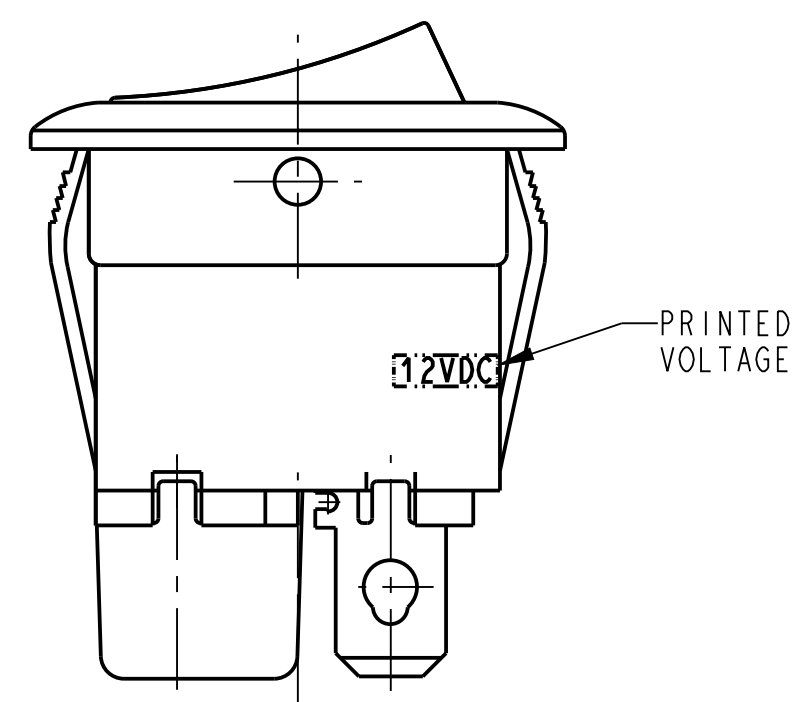
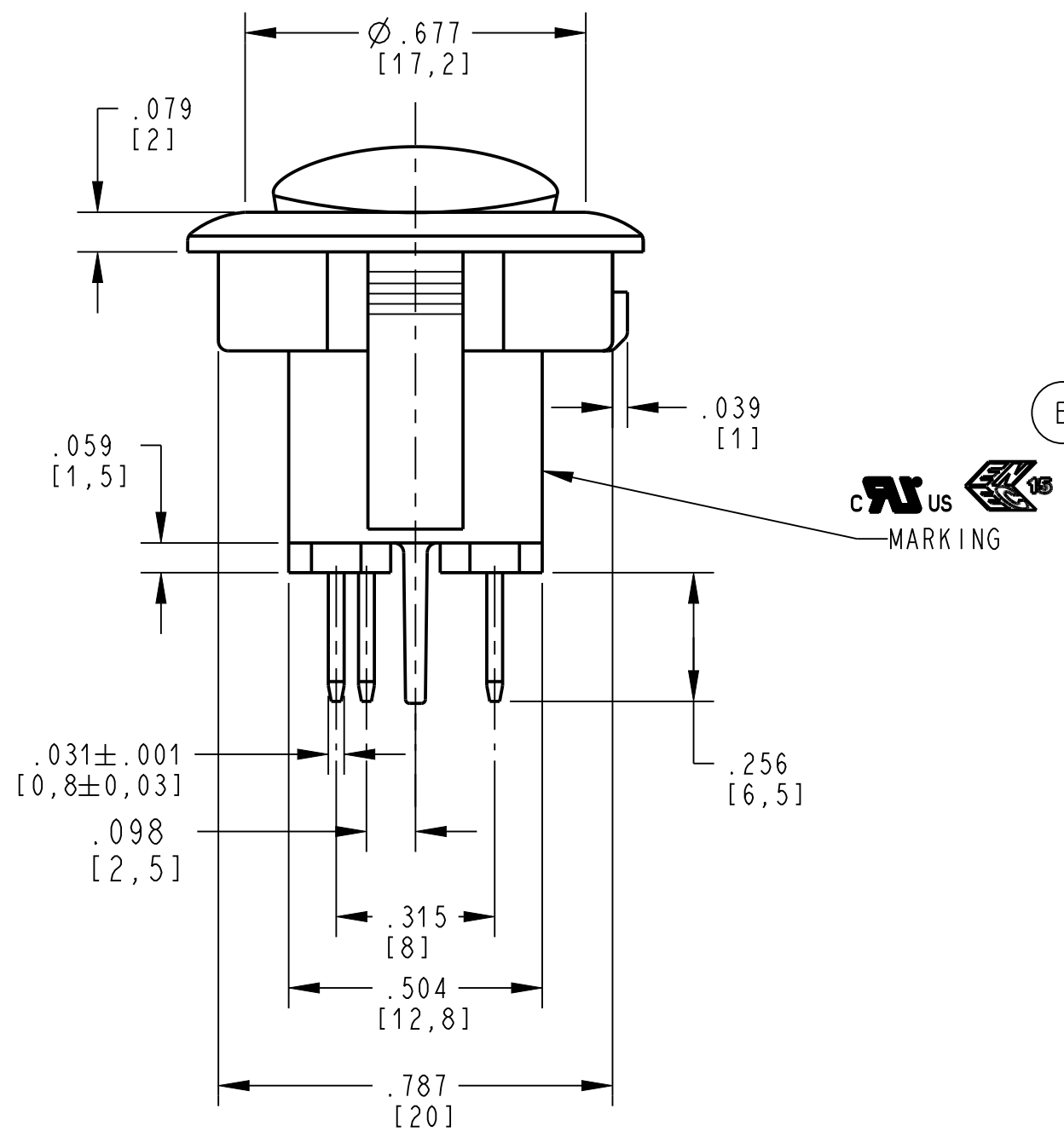
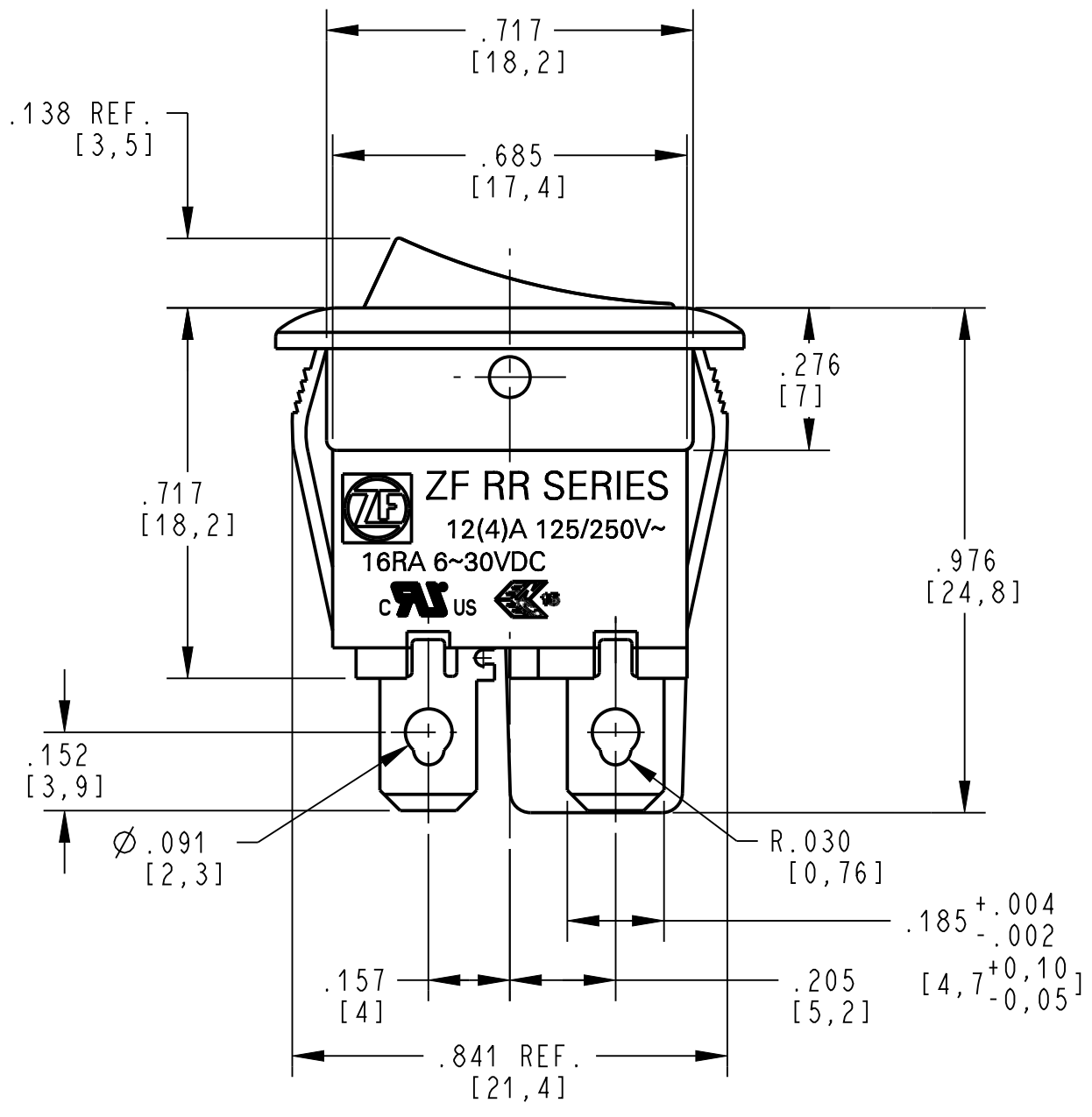


NOTES: (UNLESS OTHERWISE SPECIFIED)

- RATING TO BE MARKED ON ROCKER:
 10A 125VAC
 8A 250VAC
 1/4HP 125/250VAC
 (B) 10(4)A 250V~T125/55 10E3
 12(4)A 125/250V~
 16RA 6~30VDC.
- INITIAL CONTACT RESISTANCE: 20mΩ (MAX.)
- INSULATION RESISTANCE: 100MΩ MIN. AT 500VDC.
- DIELECTRIC STRENGTH: 1500VAC FOR 1 MINUTE.
- ILLUMINATED LED 12VDC (NO NEED TO DISTINGUISH BETWEEN THE ANODE AND AND CATHODE POLARITY.)



DWN: JPD	CONFIDENTIAL AND PROPRIETARY: ALL INFORMATION OR INVENTIONS CONTAINED IN THIS DOCUMENT OR DERIVED FROM THE INFORMATION THEREIN IS OWNED BY ZF ELECTRONIC SYSTEMS, AND IS CONFIDENTIAL AND PROPRIETARY. REVIEW OR POSSESSION OF THIS DOCUMENT INDICATES AGREEMENT THAT SUCH INFORMATION AND INVENTIONS WILL NOT BE DISCLOSED, REPRODUCED OR OTHERWISE USED IN ANY WAY WITHOUT EXPRESS WRITTEN PERMISSION FROM AN AUTHORIZED REPRESENTATIVE OF ZF ELECTRONIC SYSTEMS.	ZF Electronic Systems PLEASANT PRAIRIE, WISCONSIN U.S.A.
APVD: ELL		
DATE: 19-Jan-18		
THIRD ANGLE PROJECTION	TOLERANCE UNLESS SPECIFIED	RR SERIES - SINGLE POLE, QC, LIGHTED
	DWG UNITS: X.XX X.XXX ANGLES	C ITEM NO. RRA22H3BBRH
PROJECT/ CSR	INCHES ± 0.02 ± 0.012 ± 5.0 °	SCALE: N/A SH 1 OF 1
N/A		

B	Z000689143	5-9-2023	TCH	ELL
REV	ECO NO.	DATE	PREP	APVD

ORIGINAL ON PROJE