

# Ultraminiature Switch



## DH series

### Features

- Dimensions only 8.4 mm x 2.7 mm x 6.55 mm
- Designed for low switching currents and voltages
- Available with or without auxiliary actuator
- Solder connection or use lying or standing on a circuit board

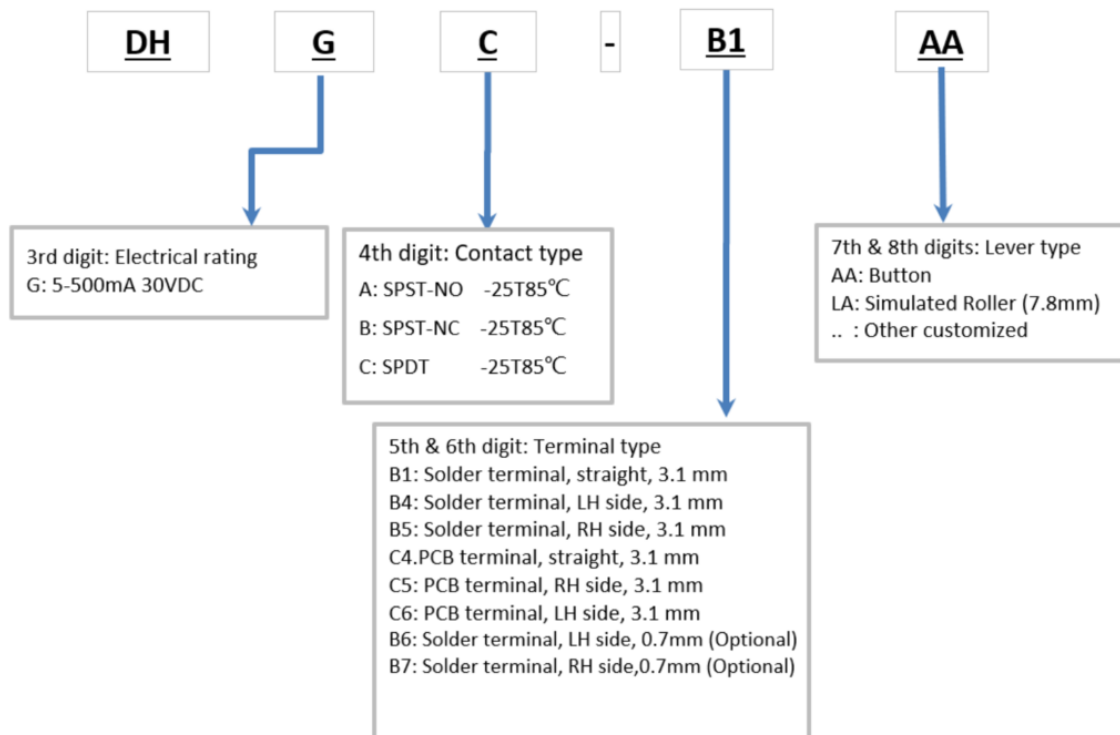
### Standard parts<sup>1</sup>

DHGC-B1AA	DHGC-B1LA	DHGC-B4LA	DHGC-C6LA	DHGC-B5LA	DHGC-C4AA
DHGC-C5AA	DHGC-C5LA	DHGC-C6AA	DHGC-C4LA		

<sup>1</sup>The part number configuration matrix below provides details to the part numbers above.

For configurable part numbers that are not listed above, not listed in your region, or for custom part numbers, contact the factory or your distributor.

### Order Code Matrix



## Materials

Housing	PPA
Cover	PA
Actuator	PBT
Auxiliary actuator	PA46
Terminals	Silver Plate Brass
Contacts	Au Alloy
Protection class	IP40

## Technical specifications

Contact configuration	S.P.D.T
Contact gap	< 3 mm
Switching voltage max.	30 V DC
Switching current	5 to 500 mA DC
Electrical life (max. load)	> 30,000 operations
Operating force	max. 90 cN
Mechanical life	> 50,000 operations
Total travel	Max. 0.8 mm without auxiliary actuator
Temperature range	-25 °C to + 85 °C (-13 °F to +185 °F)

## Electrical rating

Electrical rating	Operating life		
	at nominal load	mechanical	Code
5 – 500 mA 30 VDC	30,000	50,000	G

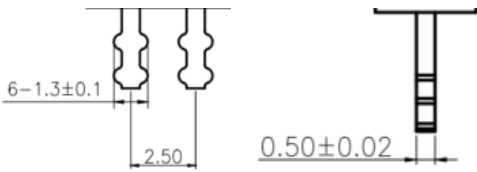
## Switching parameters

	Without auxiliary actuator	With auxiliary actuator
Pretravel	0.35 mm max.	1.3 mm max.
Differential Travel	0.07 mm max.	0.6 mm max.
Overtravel	0.03 mm min.	0.3 mm min.
Operating position	5.6 mm +/- 0.15	6.7 mm +/- 0.5

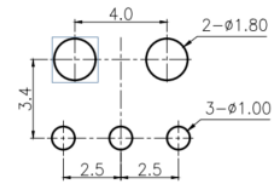
**Dimensions in mm**

**Terminals**

**Solder terminal**



**Drilling pattern**

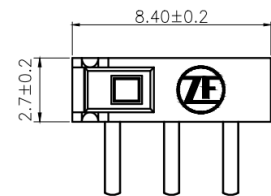
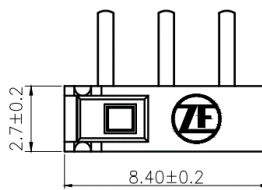
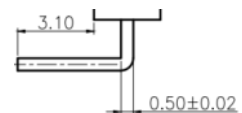
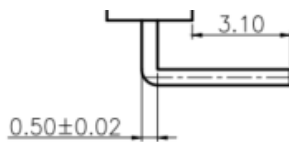
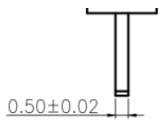
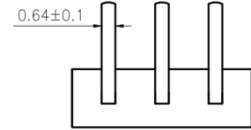
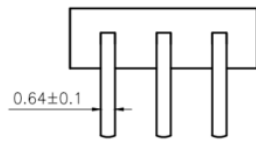
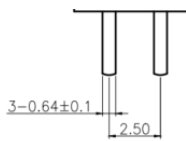


**PCB terminal straight**

**PCB terminal**

**RH side**

**LH side**



**Auxiliary actuator (plastic)**

