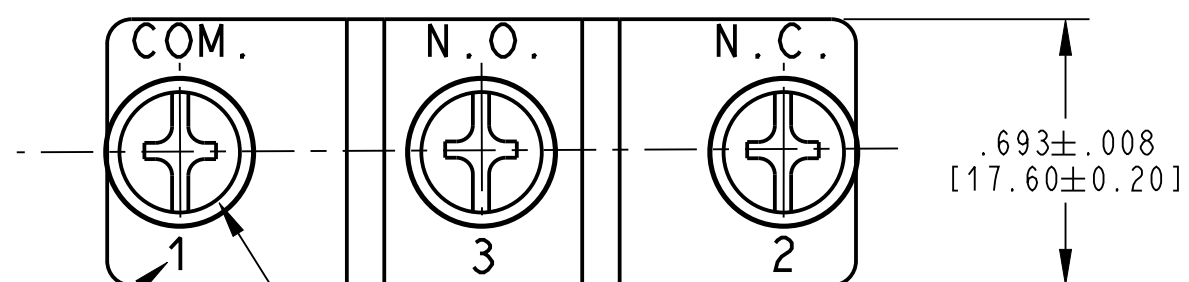


(F) NOTES (UNLESS OTHERWISE SPECIFIED):

1. RECOMMENDED MOUNTING: M4 FASTENER WITH 6.00 IN-LB [7.00 KGF-CM] OF TORQUE MAX.
2. RECOGNIZED TO U.S. AND CANADIAN REQUIREMENTS UNDER THE COMPONENT RECOGNITION PROGRAM OF UNDERWRITERS LABORATORIES, INC.
3. ALL CHARACTERISTICS ARE TAKEN AT THE ACTUATION LINE AND MEASURED FROM THE REFERENCE LINE.
4. FOR MARKING AND NAMING SPECIFICATION SEE ES021295.



TERMINAL CALL-OUTS MAY ALSO BE LISTED NUMERICALLY

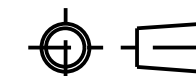
3 - M4 X 4.9 mm
TERMINAL SCREW AND
INTERNAL TOOTHED
LOCK WASHER

CHARACTERISTICS

ELECTRICAL RATING	15A 250VAC (cULus) T55°C 15A 250V~ (VDE)-5T40
TERMINAL	SCREW
ROLLER	ACUMEN ACETAL F20-03
OPER. FORCE MAX.	160 GMS
RELEASE FORCE MIN.	42 GMS
PRETRAVEL MAX.	.106 [2.7 mm]
OVERTRAVEL MIN.	.094 [2.4 mm]
MOVE. DIFF. MAX.	.019 [0.5 mm]
REST POSITION MAX.	1.280 (32.5 mm)
OPERATING POSITION	1.173 TO 1.205 [29.8 TO 30.6 mm]

DWN: JED
APVD: SB
DATE: 25-May-04

THIRD ANGLE PROJECTION



CONFIDENTIAL AND PROPRIETARY:
ALL INFORMATION OR INVENTIONS CONTAINED IN THIS
DOCUMENT OR DERIVED FROM THE INFORMATION THERE
IN IS OWNED BY ZF ELECTRONIC SYSTEMS, AND IS
CONFIDENTIAL AND PROPRIETARY. REVIEW OR
POSSESSION OF THIS DOCUMENT INDICATES AGREEMENT
THAT SUCH INFORMATION AND INVENTIONS WILL NOT BE
DISCLOSED, REPRODUCED OR OTHERWISE USED IN ANY
WAY WITHOUT EXPRESS WRITTEN PERMISSION FROM AN
AUTHORIZED REPRESENTATIVE OF ZF ELECTRONIC
SYSTEMS.



ZF Electronic Systems

PLEASANT PRAIRIE, WISCONSIN U.S.A.

NAME / DESCRIPTION

SPEC DRAWING

F	Z000360152	2016-04-21	GP	EL
REV	ECO NO.	DATE	PREP	APVD

PROJECT/ CSR	4000000138
--------------	------------

DWG UNITS	X.XX	X.XXX	ANGLES
INCH	± 0.02	± 0.015	± 5 °

C	ITEM NO.	GPTCRM01
SCALE:	DO NOT SCALE	SH 1 OF 1