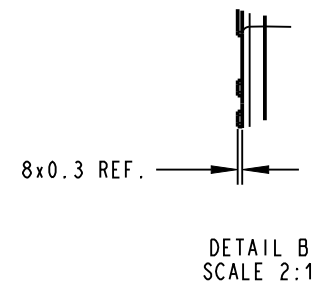

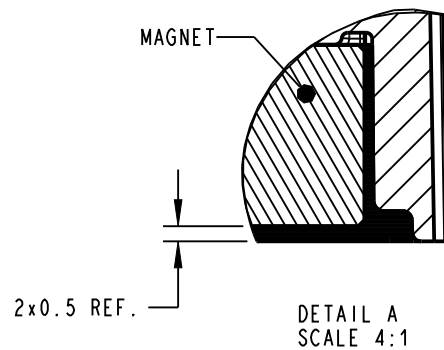
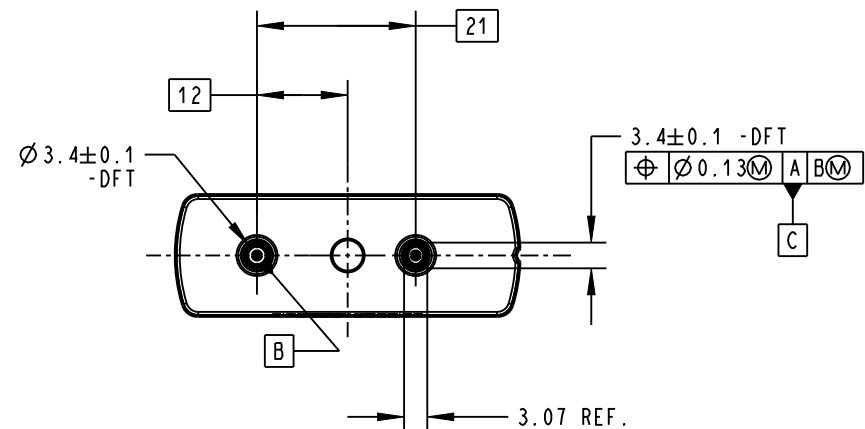


- NOTES:
8. EPOXY MUST BE FREE OF BUBBLES, CRACKS OR GAPS AGAINST THE HOUSING.
 9. PCB MUST BE FULLY SEATED INTO THE BASE OF THE HOUSING.
 10. WIRES: 20 AWG EXRAD.



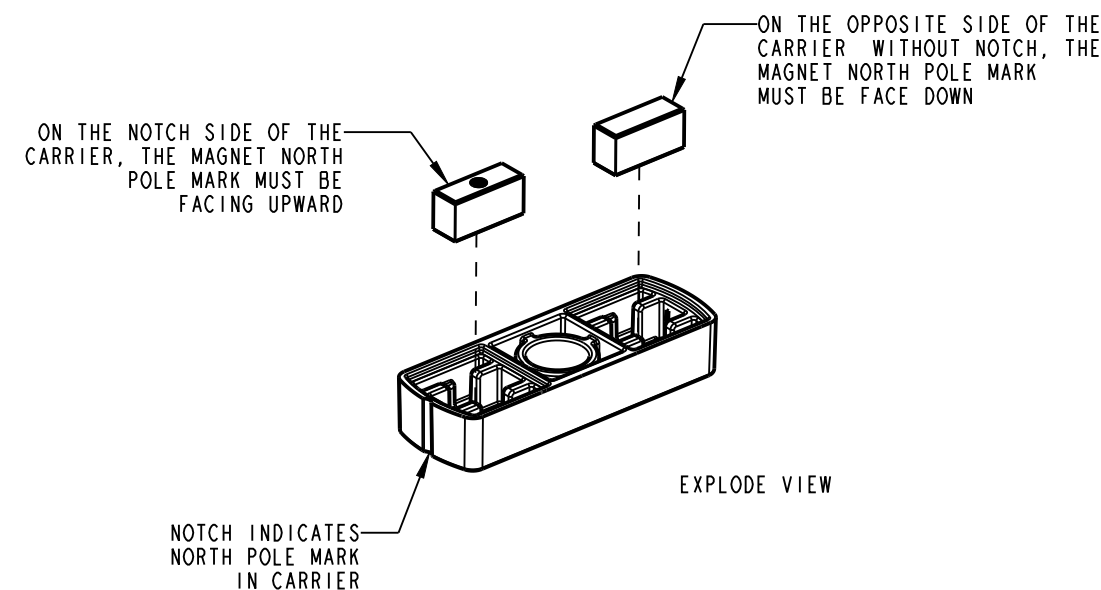
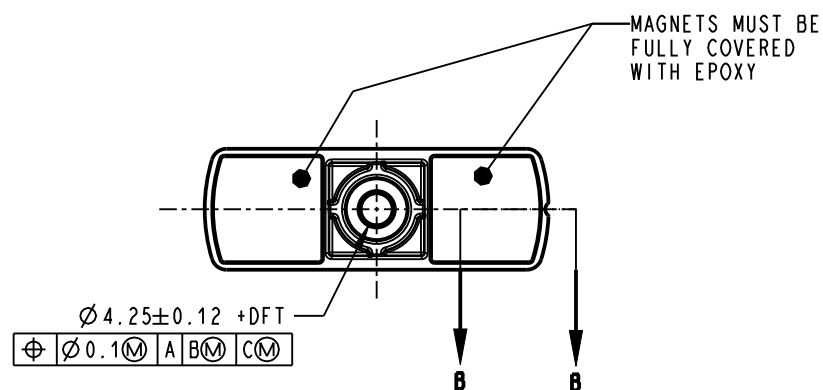
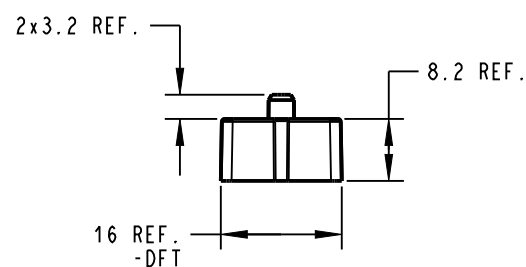
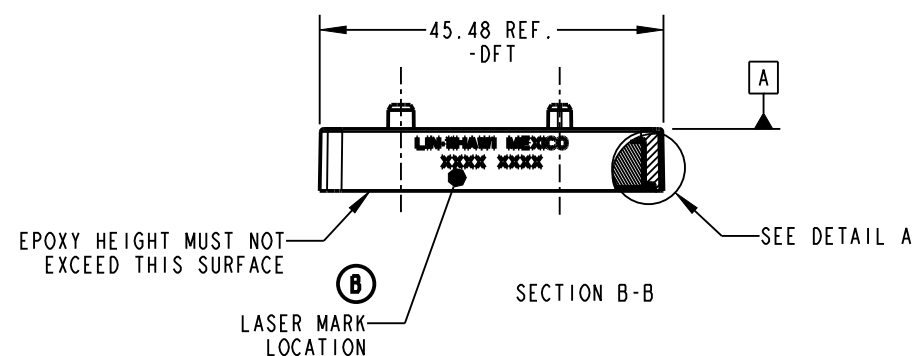
CONFIDENTIAL AND PROPRIETARY:
ALL INFORMATION OR INVENTIONS CONTAINED IN THIS
DOCUMENT OR DERIVED FROM THE INFORMATION THERE
IN IS OWNED BY ZF ELECTRONIC SYSTEMS, AND IS
CONFIDENTIAL AND PROPRIETARY. REVIEW OR
POSSESSION OF THIS DOCUMENT INDICATES AGREEMENT
THAT SUCH INFORMATION AND INVENTIONS WILL NOT BE
DISCLOSED, REPRODUCED OR OTHERWISE USED IN ANY
WAY WITHOUT EXPRESS WRITTEN PERMISSION FROM AN
AUTHORIZED REPRESENTATIVE OF ZF ELECTRONIC
SYSTEMS.

PRELIMINARY			
DATE: 2025-02-12			
 ZF Electronic Systems			
PLEASANT PRAIRIE, WISCONSIN U.S.A.			
B	ITEM NO.	LIN-11HAW1	
REV:	C	SH	2 OF 3



NOTES:

11. EPOXY MUST BE FREE OF BUBBLES, CRACKS OR SEPARATION OF HOUSING.
12. INSTALLATION OF MAGNETS SHALL BE LOCATED USING NORTH POLE MARKS AND NOTCH IN CARRIER ACCORDINGLY WITH EXPLODE VIEW.
13. 28mm REF. MAGNETS SPACING CENTER-CENTER



CONFIDENTIAL AND PROPRIETARY:
ALL INFORMATION OR INVENTIONS CONTAINED IN THIS DOCUMENT OR DERIVED FROM THE INFORMATION THEREIN IS OWNED BY ZF ELECTRONIC SYSTEMS, AND IS CONFIDENTIAL AND PROPRIETARY. REVIEW OR POSSESSION OF THIS DOCUMENT INDICATES AGREEMENT THAT SUCH INFORMATION AND INVENTIONS WILL NOT BE DISCLOSED, REPRODUCED OR OTHERWISE USED IN ANY WAY WITHOUT EXPRESS WRITTEN PERMISSION FROM AN AUTHORIZED REPRESENTATIVE OF ZF ELECTRONIC SYSTEMS.

PRELIMINARY
DATE: 2025-02-12



ZF Electronic Systems

PLEASANT PRAIRIE, WISCONSIN U.S.A.

B	ITEM NO.	LIN-11HAW1
REV:	C	SH 3 OF 3