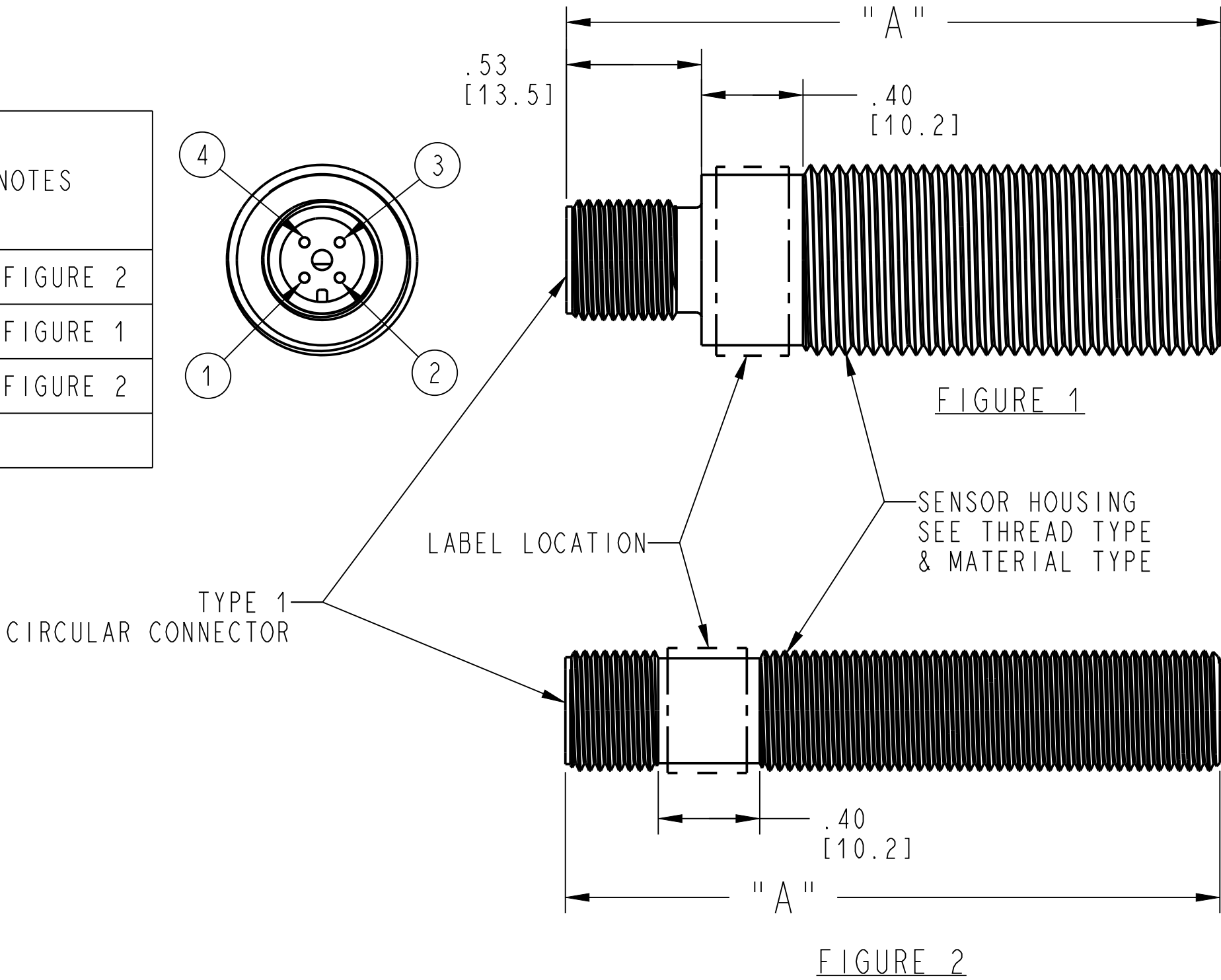


ZF ELECTRONICS					OUTPUT				NOTES
PART NUMBER	LENGTH "A"	THREAD TYPE	MATERIAL TYPE	CONNECTOR TYPE	SUPPLY V _{cc}	GROUND	OUTPUT V _o	DIRECTION	
GS100101	65.5mm	1	1	1	1	3	4	N/A	SEE FIGURE 2
GS100201	65.5mm	2	1	1	1	3	4	N/A	SEE FIGURE 1
GS100501	65.5mm	1	2	1	1	3	4	N/A	SEE FIGURE 2



NOTES:

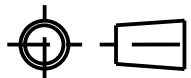
1. ALL SENSORS ARE 100% FUNCTIONAL TESTED.
2. PRODUCT IS ROHS COMPLIANT.
3. OPERATING TEMPERATURE RANGE: -40°C to +125°C.
4. LABEL LOCATION AS SPECIFIED IN EACH FIGURE.
5. LABEL TO INCLUDE:
ZF MEXICO
ZF PART NUMBER
DATE CODE (YY/WW - A/B SHIFT CODE)
6. REFER TO PRODUCT SPECIFICATION DOCUMENT NUMBER PSPEC-00022 FOR ADDITIONAL INFORMATION.
- (K) 7. FOR GS100101, GS100201 AND GS100501 PART TO MATE WITH MOLEX 120065 SERIES CONNECTORS OR EQUIVALENT.

MATERIAL TYPE	DESCRIPTION
1	STAINLESS STEEL TYPE 303, NON-MAGNETIC
2	ANODIZED ALUMINUM METRIC = RED, ENGLISH = BLACK

THREAD TYPE	DESCRIPTION
1	M12 X 1 CLASS 6g
2	M18 X 1 CLASS 6g

CONNECTOR TYPE	DESCRIPTION
1	M12 X 1 CIRCULAR CONNECTOR MATERIAL: NYLON (IEC60947-5-2)

DWN: DSK
APVD: JR
DATE: 07-Jan-99
THIRD ANGLE PROJECTION



(K)



ZF Electronic Systems

PLEASANT PRAIRIE, WISCONSIN U.S.A.

NAME / DESCRIPTION

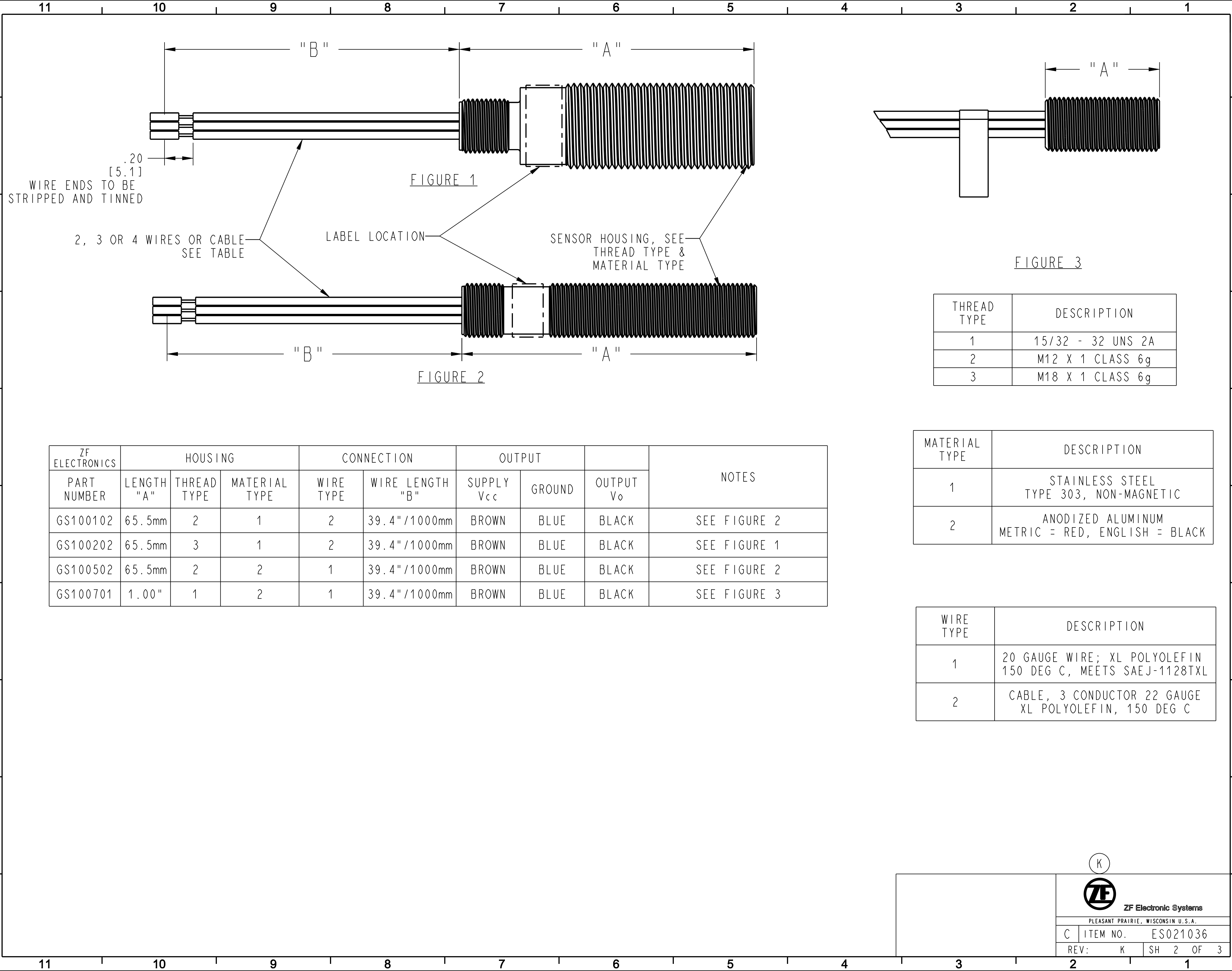
SPEED SENSOR

C ITEM NO. ES021036

SCALE: 1:1 SH 1 OF 3

K	Z000635220	2022-03-09	RJC	TB
REV	ECO NO.	DATE	PREP	APVD

PROJECT/ CSR	TOLERANCE UNLESS SPECIFIED			
	DWG UNITS	X.XX	X.XXX	ANGLES
	INCHES	± 0.01	± 0.005	± 2.0 °



(K)



ZF Electronic Systems

PLEASANT PRAIRIE, WISCONSIN U.S.A.

C	ITEM NO.	ES021036
REV:	K	SH 2 OF 3

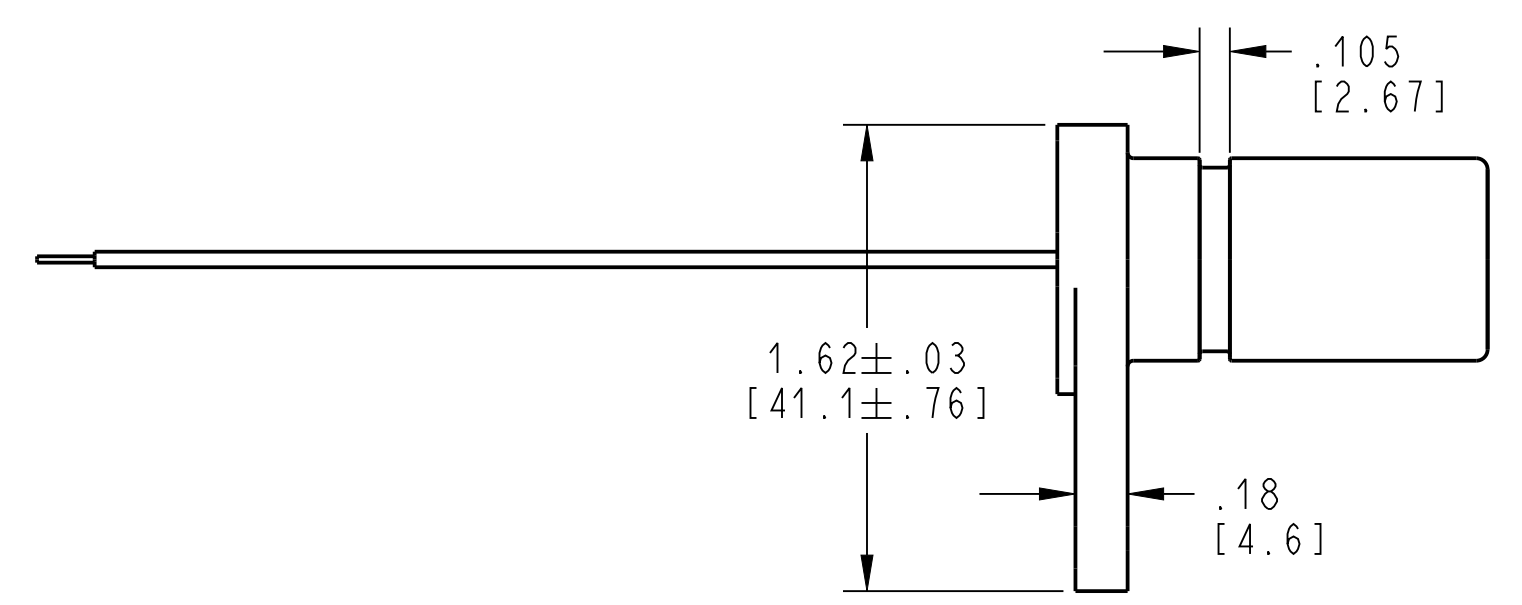
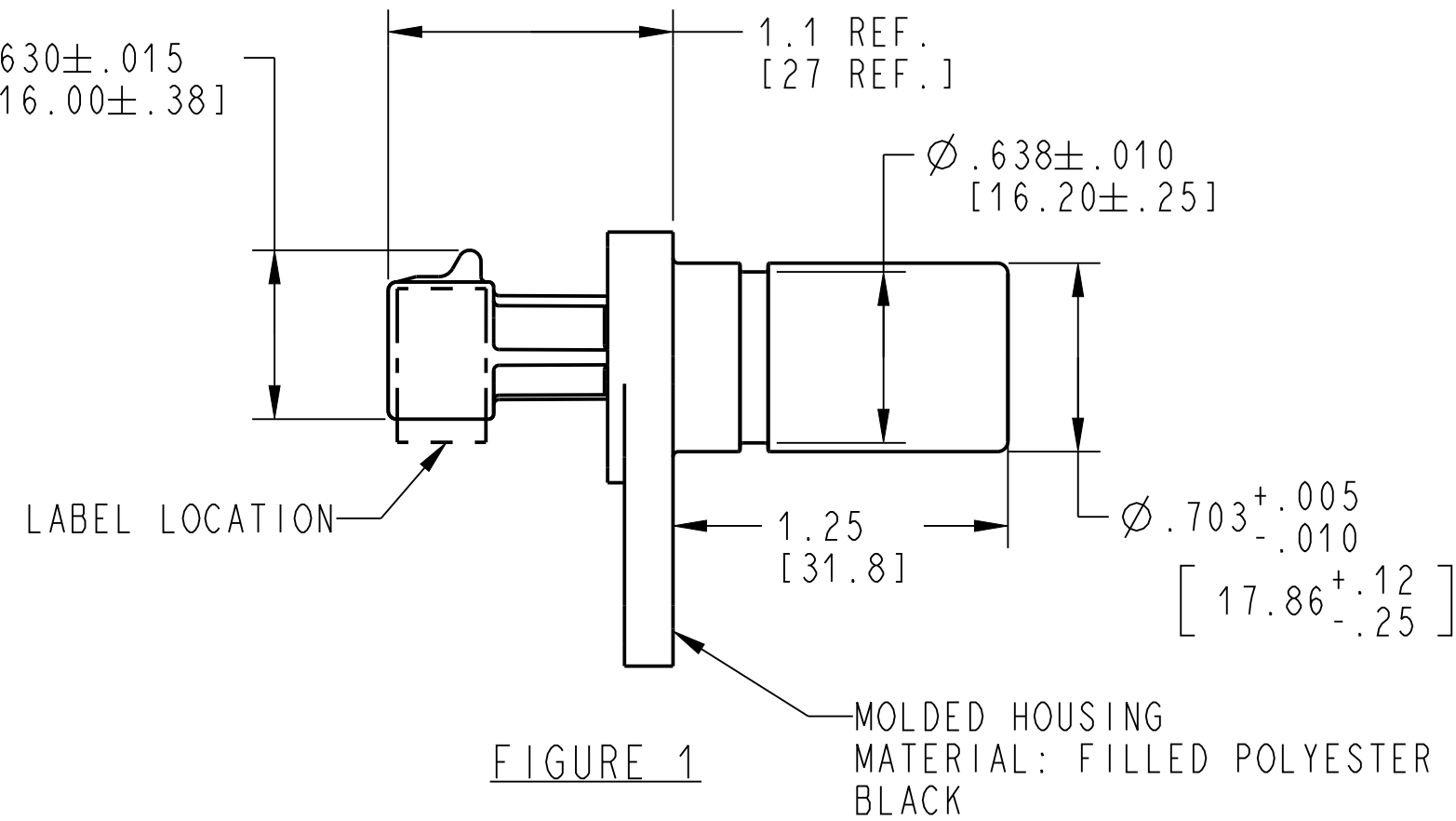
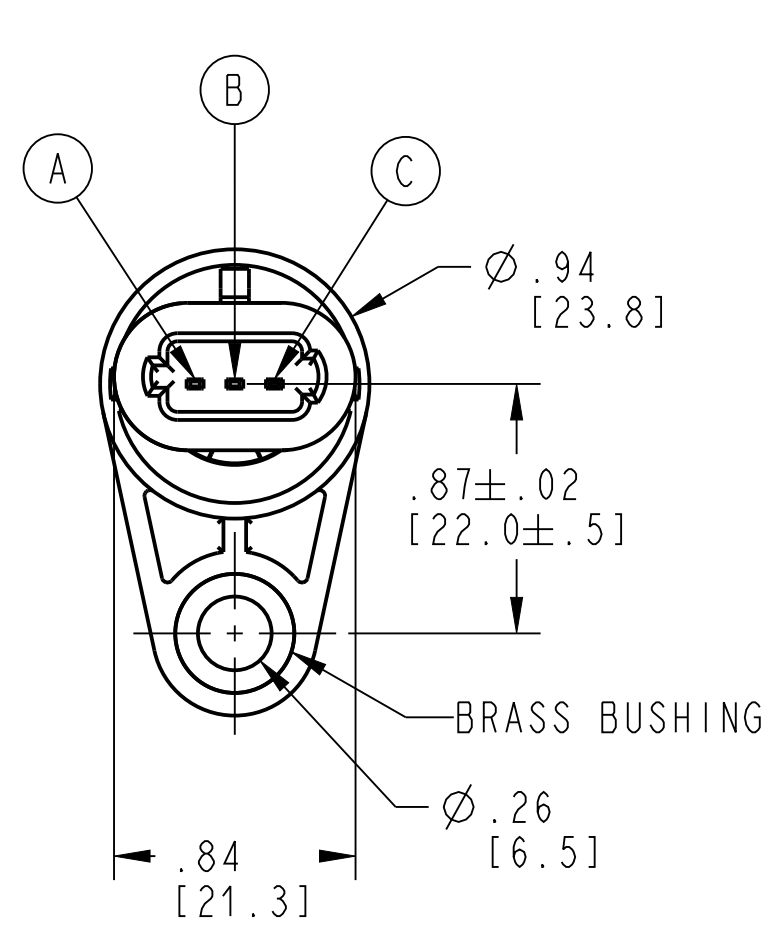
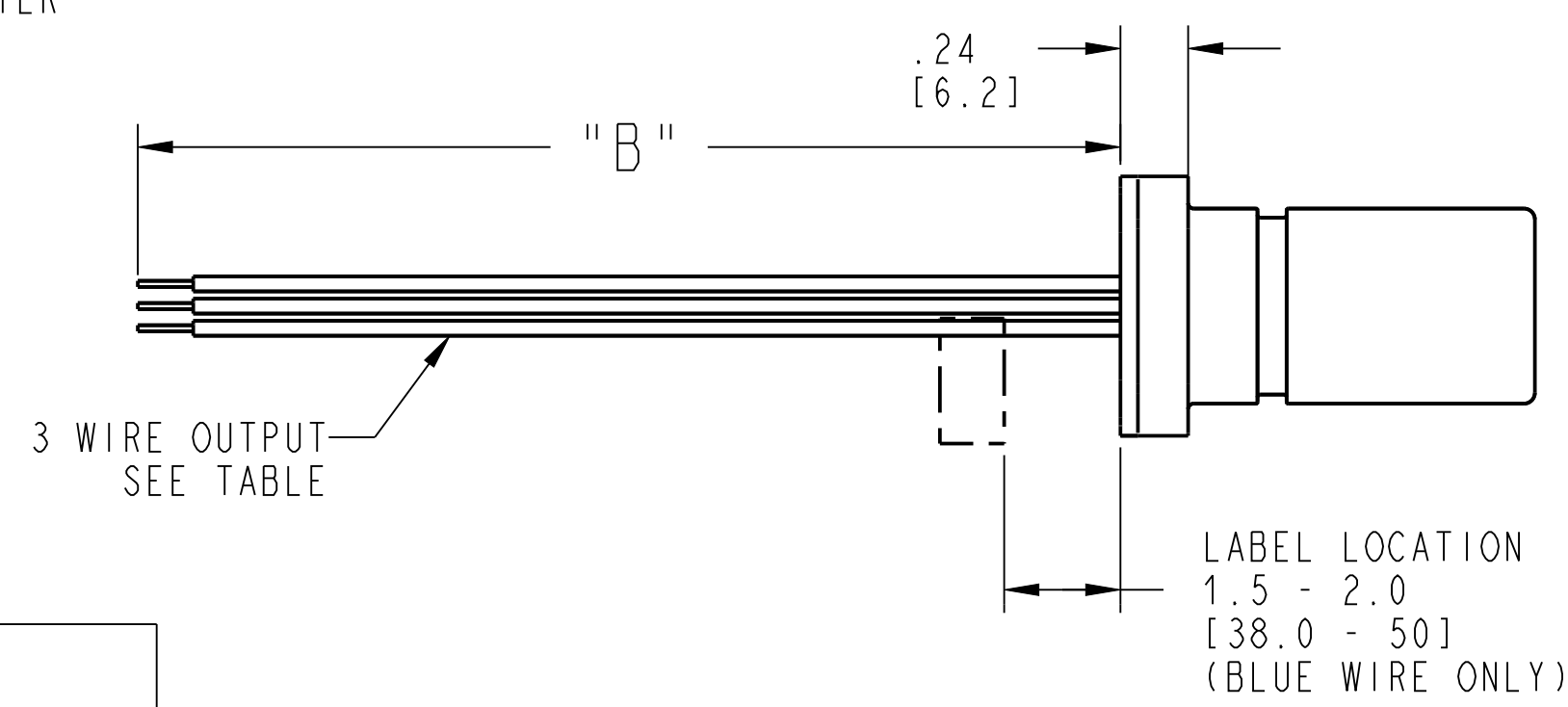


FIGURE 2



CONNECTOR TYPE	DESCRIPTION
1	DELPHI METRI-PACK 150 MOLDED CONNECTOR MATERIAL: FILLED POLYESTER, BLACK MATES WITH 12162280 & 12162279

ZF ELECTRONICS	CONNECTION			OUTPUT			NOTES
PART NUMBER	WIRE TYPE	CONNECTOR TYPE	WIRE LENGTH "B"	SUPPLY V _{c c}	GROUND	OUTPUT V _o	
GS101201	N/A	1	N/A	A	C	B	SEE FIGURE 1
GS101202	1	N/A	39.4"/1000mm	BROWN	BLUE	BLACK	SEE FIGURE 2

WIRE TYPE	DESCRIPTION
1	20 GAUGE WIRE; XL POLYOLEFIN 150 DEG C, MEETS SAEJ-1128TXL

(K)

