
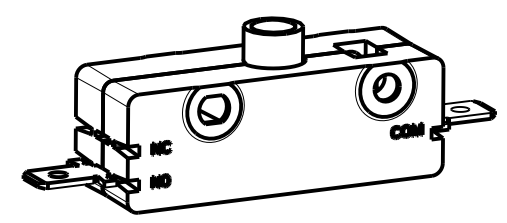
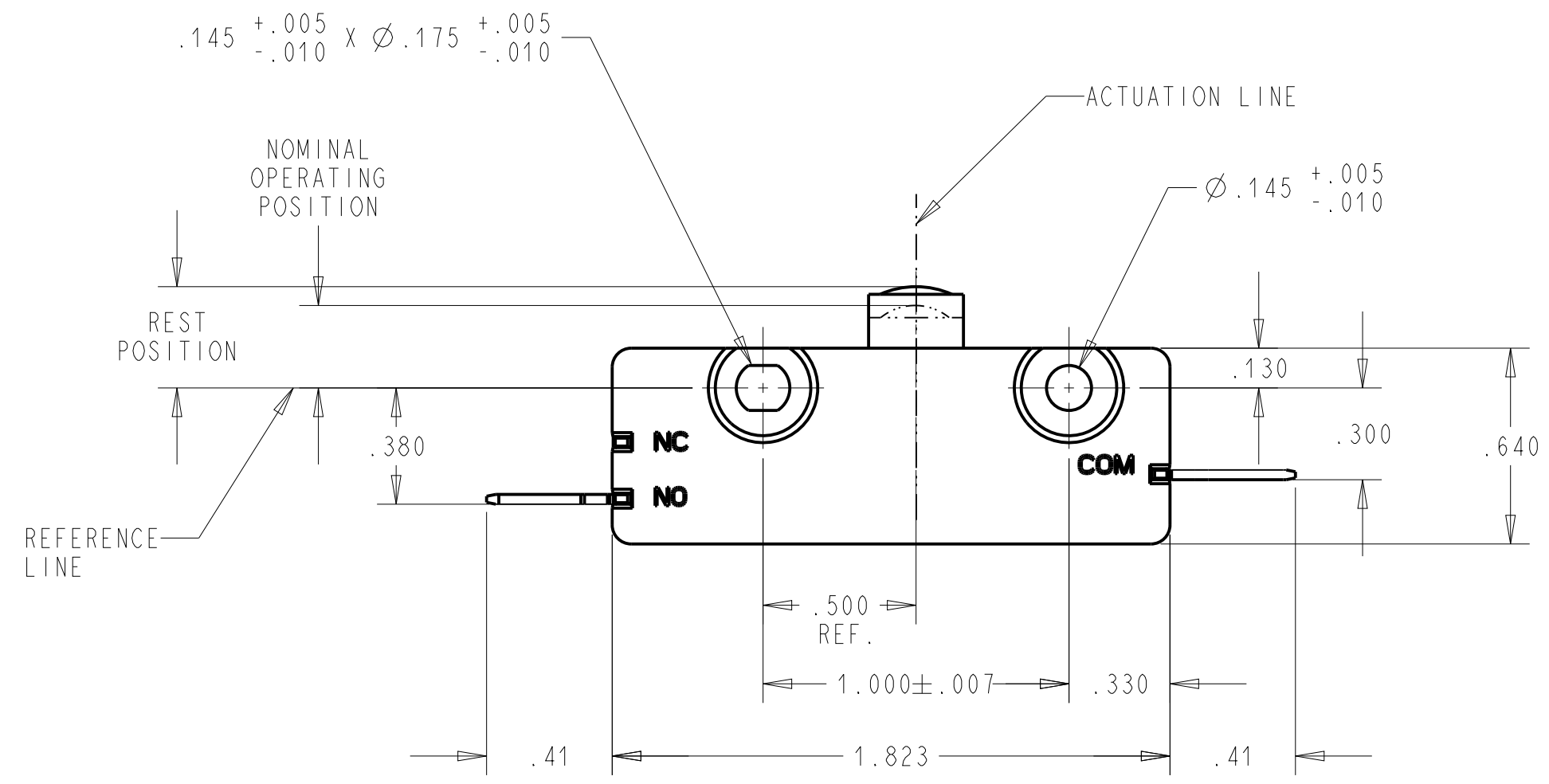



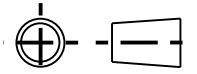
- NOTES:
- SWITCH CHARACTERISTICS:
REST POSITION .350 MAX.
PRE-TRAVEL .050 MAX.
OPERATING POSITION .265 TO .305
OVER-TRAVEL .100 MIN.
MOVEMENT DIFF. .015 MAX.
OPERATING FORCE grams 425 MAX.
RELEASE FORCE grams 85 MIN.

ALL CHARACTERISTICS ARE TAKEN AT THE ACTUATION LINE AND MEASURED FROM THE REFERENCE LINE.

-  SWITCH RATINGS:
15 AMPS, 125/250 VAC
3/4 HP 125 VAC
1 1/2HP 250 VAC
2 AMPS, 48 VDC
- TERMINALS COMMON & N.O. ARE .250 WIDE x .032 THK.
- RECOGNIZED TO U.S. AND CANADIAN REQUIREMENTS UNDER THE COMPONENT RECOGNITION PROGRAM OF UNDERWRITERS LABORATORIES, INC.
- TEMPERATURE RATING: -40°C TO 105°C



SHOWN IN A NON CLINCHED STATE
SCALE 1.000

DWN: R.YAÑEZ					 ZF Electronic Systems 11200 88th AVE. PLEASANT PRAIRIE, WI 53158			
APVD: SG								
DATE: 08-Feb-05								
THIRD ANGLE PROJECTION 					NAME / DESCRIPTION			
PROJECT/ CSR 4000000138					SPECIFICATION DRAWING			
TOLERANCE UNLESS SPECIFIED					B ITEM NO. 0E13-01E0			
DWG UNITS X.XX X.XXX ANGLES					SCALE: 2.000 SH 1 OF 1			
INCH ± 0.02 ± 0.015 ± 5.0 °								

D	Z000370093	30-Jun-16	JPD	ELL
REV	ECO NO.	DATE	PREP	APVD