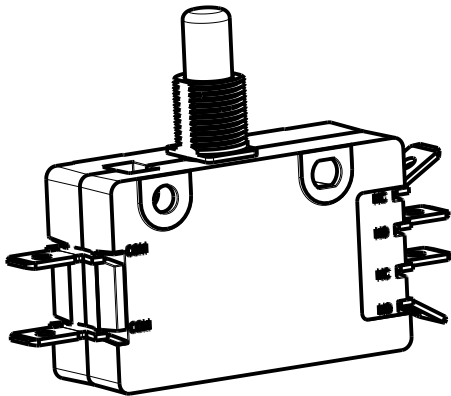
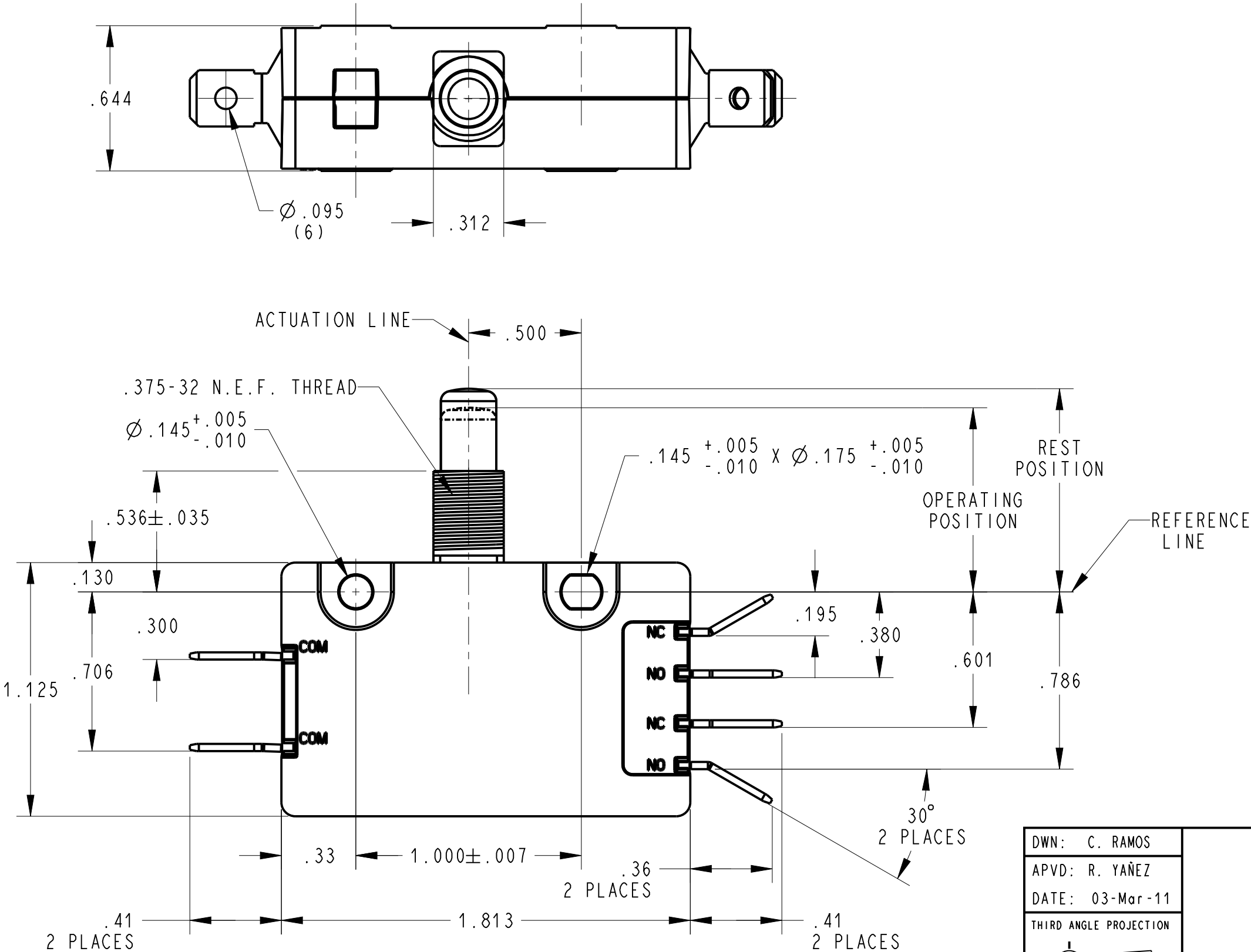


- NOTES (UNLESS OTHERWISE SPECIFIED):
- *SWITCH CHARACTERISTICS
REST POSITION .875 MAX.
PRETRAVEL .100 MAX.
OPERATING POSITION .744 TO .804
OVER TRAVEL .188 MIN.
MOVEMENT DIFF. EACH POLE .015 MAX.
OPERATING FORCE grams 1280 MAX.
RELEASE FORCE grams 170 MIN.
 - ALL CHARACTERISTICS ARE TAKEN AT THE ACTUATION LINE AND MEASURED FROM THE REFERENCE LINE.
 2. **UL** **us** ELECTRICAL RATING
20A, 125/250 VAC;
1 H.P. 125 VAC;
2 H.P. 250 VAC;
 3. TERMINALS ARE .250 WIDE X .032 THICK.
 4. RECOGNIZED TO U.S. AND CANADIAN REQUIREMENTS UNDER THE COMPONENT RECOGNITION PROGRAM OF UNDERWRITERS LABORATORIES, INC.
 5. TEMPERATURE RATING: -40°C TO 105°C

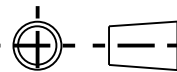


SHOWN IN A NON CLINCHED STATE
SCALE 1:1



DWN: C. RAMOS
APVD: R. YAÑEZ
DATE: 03-Mar-11

THIRD ANGLE PROJECTION



PROJECT/ CSR
4000000138

TOLERANCE UNLESS SPECIFIED

DWG UNITS	X.XX	X.XXX	ANGLES
INCH	± 0.02	± 0.015	± 5.0 °



ZF Electronic Systems

11200 88th AVE. PLEASANT PRAIRIE, WI 53158
NAME / DESCRIPTION

SPEC DRAWING

B ITEM NO. 0E20-00M0

SCALE: 2:1 SH 1 OF 1

B	Z000371638	10-Jun-16	JPD	ELL
REV	ECO NO.	DATE	PREP	APVD