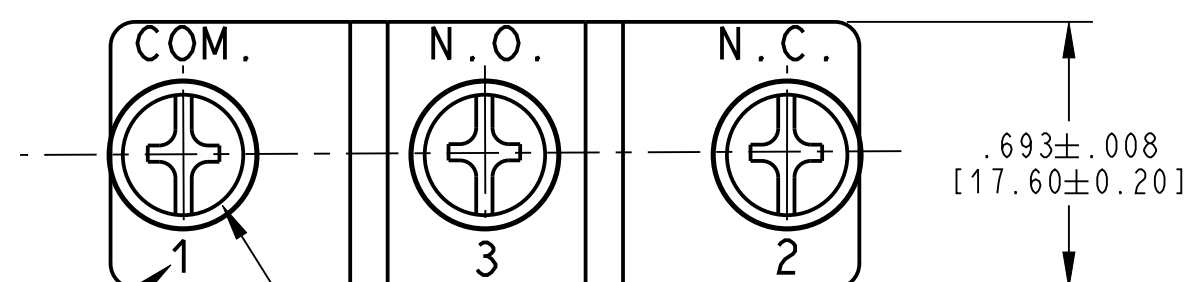


NOTES (UNLESS OTHERWISE SPECIFIED): (H)

- 1 RECOMMENDED MOUNTING:  
#6-32 FASTENER WITH 6.00 IN-LB [7.00 KGF-CM] OF TORQUE MAX.
- 2 RECOGNIZED TO U.S. AND CANADIAN REQUIREMENTS UNDER THE  
COMPONENT RECOGNITION PROGRAM OF UNDERWRITERS LABORATORIES, INC.
- 3 ALL CHARACTERISTICS ARE TAKEN AT THE ACTUATION LINE AND MEASURED  
FROM THE REFERENCE LINE.
- 4 FOR MARKING AND NAMING SPECIFICATIONS SEE ES021295.

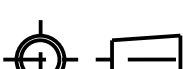

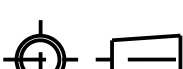
CHARACTERISTICS (H)

ELECTRICAL RATING	15A 250VAC (cULus) T55°C 15A 250V~ (VDE) -5T40
TERMINAL	SCREW
ROLLER	ACUMEN ACETAL F20-03
OPER. FORCE MAX.	160 GMS
RELEASE FORCE MIN.	42 GMS
PRETRAVEL MAX.	.106 [2.7 mm]
OVERTRAVEL MIN.	.094 [2.4 mm]
MOVE. DIFF. MAX.	.019 [0.5 mm]
REST POSITION MAX.	1.280 (32.5 mm)
OPERATING POSITION	1.173 TO 1.205 [29.8 TO 30.6 mm]



TERMINAL CALL-OUTS MAY  
ALSO BE LISTED NUMERICALLY

3 - M4 X 4.9 mm  
TERMINAL SCREW AND  
INTERNAL TOOTHED  
LOCK WASHER

DWN: JED						 <b>ZF Electronic Systems</b>	
APVD: SG							
DATE: 21-JUL-04							
THIRD ANGLE PROJECTION		TOLERANCE UNLESS SPECIFIED				PLEASANT PRAIRIE, WISCONSIN U.S.A.	
						NAME / DESCRIPTION	
		SPECIFICATION DRAWING					
L	PROJECT/ CSR	DWG UNITS	X.XX	X.XXX	ANGLES	C	ITEM NO. GPTCRM11
VD	4000000138	INCHES	± .02	± .015	± 5 °	SCALE: 2:1	SH 1 OF 1

H	Z000360155	2016-04-25	TLM	ELL
REV	ECO NO.	DATE	PREP	APVD

ORIGINAL ON PROJE