

# DJ SUB-SUBMINIATURE SWITCH

## DJ sub-subminiature switch

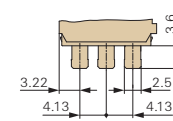
Sealed switch up to IP67, suitable for actuations at angles up to 40° depending on slide partner material, etc.

- Easy installation thanks to connector pins or fastening nut
- Smallest dimensions
- Models available for up to 85°C operating temperature
- Nominal currents 5 mA to 2 A at 12 V DC
- High contact stability with AuAg crosspoint contacts
- Mechanical operating life min. 500,000 operations
- Many connection possibilities, also with leads

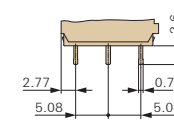


## Terminals

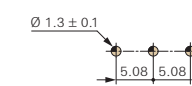
Solder terminal  
2.5 x 0.5 mm



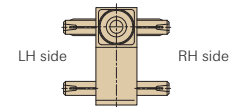
PCB terminal, straight  
0.7 x 0.5 mm



Drilling pattern for PCB terminal 0.7 x 0.5 mm

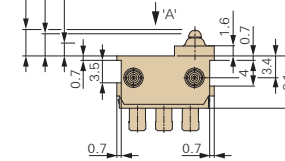


Side definition

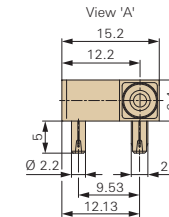


Dimensions in mm

Rest position max. 4.1  
Operating point 3.45 ± 0.2  
End position min. 2.05



Dimensions in mm



## Technical specifications

<b>Series</b>	DJ ①
<b>Contact configuration</b>	S.P.D.T.
<b>Contact gap</b>	< 3 mm
<b>Switching voltage (max.)</b>	12 VDC up to 60 V on request
<b>Switching current</b>	0.005 to 2 A DC
<b>Operating voltage</b>	Max. 120 cN
<b>Total travel</b>	Approx. 2.0 mm
<b>Mechanical life</b>	Min. 500,000 operations
<b>Electrical life (max. load)</b>	Min. 100,000 operations
<b>Ambient temperature</b>	-40 to +85°C

## Materials

<b>Base</b>	PBT/PES
<b>Cover</b>	PBT + ASA
<b>Actuator</b>	POM
<b>Sealing gasket</b>	VMQ
<b>Terminals</b>	CuZn silver-plated
<b>Contacts</b>	AuAg (Crosspoint)
<b>Degree of protection</b>	IP67
<b>Switch interior</b>	

## Electrical rating ②

<b>Model</b>	<b>Code</b>
0.005 – 2 A DC, 12 V	1

## Circuitry ③

<b>Model</b>	<b>Code</b>
S.P.D.T.	G

## Terminal type ④

<b>Model</b>	<b>Code</b>
Solder terminal, straight, 2.5 x 0.5 mm, w/o location pins	AN
Solder terminal, straight, 2.5 x 0.5 mm, RH side location pins	AR
Solder terminal, straight, 2.5 x 0.5 mm, LH side location pins	AL
PCB terminal, straight, 0.7 x 0.5 mm, w/o location pins	BN
PCB terminal, straight, 0.7 x 0.5 mm, mit RH side loc. pins	BR
PCB terminal, straight, 0.7 x 0.5 mm, mit LH side loc. pins	BL

## Auxiliary actuator ⑤

<b>Model</b>	<b>Code</b>
Without auxiliary actuator	A0

Generation of order code (example)  
The order code consists of 5 parameters:

①	②	③	④	⑤
Series	Electrical rating	Circuitry	Terminal type	Auxiliary actuator
DJ = sub-sub-miniature switch	1 = 0.005–2 A DC, 12 V	G = S.P.D.T.	AN = Solder terminal, straight 2.5 x 0.5 w/o location pins	A0 = without auxiliary actuator

- Not every configurable variant is available for order. Please contact us.
- The final two digits of article numbers on commercial documents refer to the index of the respective drawing.

