







## DZ subminiature switch

### Technical specifications

<b>Contact configuration</b>	S.P.D.T., S.P.S.T. - N.C.
<b>Contact gap</b>	< 3 mm ( $\mu$ )
<b>Switching voltage max.</b>	250VAC
<b>Switched current</b>	3 (3) A
<b>Operating force</b>	220cN without auxiliary actuator
<b>Total travel</b>	1,6 mm
<b>Mechanical life</b>	Min. $1 \times 10^6$ operations
<b>Electrical life</b>	25E3
<b>Ambient temperature</b>	-20 to +85°C
<b>Proof tracking index</b>	PTI 250
<b>Materials</b>	
<b>Base / cover</b>	PET (UL 94 V-0)
<b>Actuator</b>	POM (UL 94 HB)
<b>Positive break lever</b>	LCP (UL 94 V-0)
<b>Contacts</b>	AgSnO <sub>2</sub>
<b>Terminals</b>	CuZn (silver-plated)
<b>Auxiliary actuator</b>	Stainless steel
<b>Approvals</b>	   
<b>Degree of protection (switch interior)</b>	IP40

For detailed information and the layout of the details described above, please do not hesitate to ask for our technical specifications and drawing.

### Features

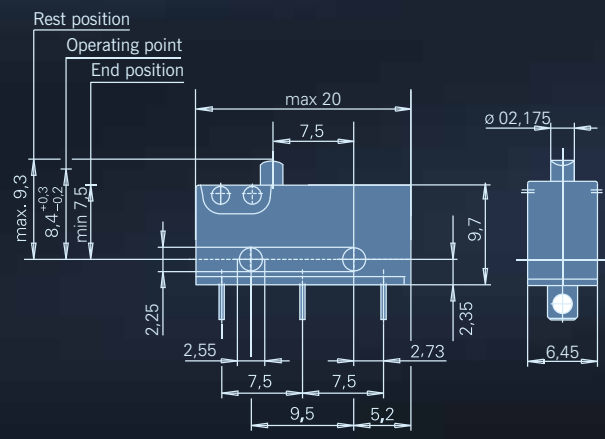
- Positive break action on NC contact
- Precision switch with high switch accuracy
- Various auxiliary actuators (can also be retrofitted) two mounting positions
- Various terminal types available

**PLEASE NOTE**

**CHERRY will become ZF in 2017.**



### Dimensions in mm



## Electrical rating and operating life

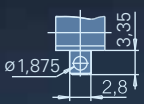
Electrical rating according to		Electrical life at rated load for 40T85* (Operations)		Mechanical life	Max. operating force (cN)	Housing mark
EN 61058-1	UL 1054	acc. to EN	acc. to UL			
3 (3) A 250VAC	5 A 125-250VAC	25.000	6.000	1 x 10 <sup>6</sup>	220	DZ 1

## Preferred parts

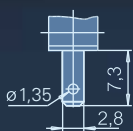
Order code	Electrical rating		Terminals	Auxiliary actuator	Operating force (cN)	Operating point (mm)	Max. pretravel (mm)	Min. overtravel (mm)	Differential travel max. (mm)
	EN	UL							
DZ1G-B1BA	3 (3) A, 250VAC	5 A, 125-250VAC	Q.C. terminal, 2,8x0,5 mm, straight	-	220	8,4 +0,3/-0,2	1,0	0,6	0,01-0,15

## Terminals

Solder terminal, short



Q.C. terminal 2,8x0,5 mm



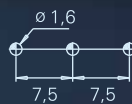
PCB terminal 1,3x0,5 mm



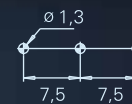
PCB terminal 0,6x0,5 mm



PCB terminals underside 1,3x0,5 mm



PCB terminals underside and lateral 0,6x0,5 mm



PCB terminal 0,6x0,5 mm RH-side w/o location pins



PCB terminal 0,6x0,5 mm LH-side w/o location pins



Side definition



## Drilling patterns