

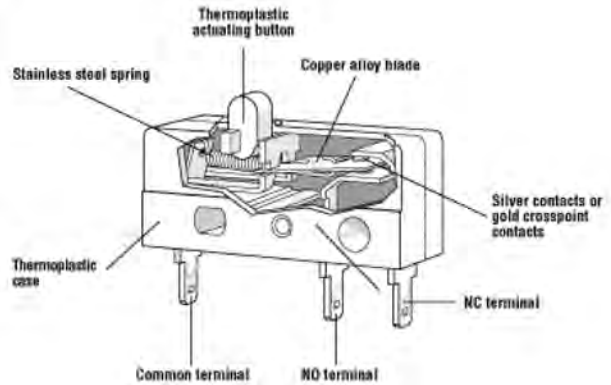
SUBMINIATURE Switch

# E61-E64 Series

PRODUCT DISCONTINUED

PLEASE REFER TO OUR SUBMINIATURE DB SERIES:

[HTTP://CHERRYSWITCHES.COM/US/PRODUCT/SUBMINIATURE-DB/](http://cherryswitches.com/us/product/subminiature-db/)



## Features

- 4 Contact Ratings
- Long life coil spring mechanism
- High temperature versions optional
- Four terminal types
- RoHS compliant

| Electrical Ratings and Operating Life |                                       |                               |
|---------------------------------------|---------------------------------------|-------------------------------|
| Switch Series                         | According to UL 1054                  |                               |
|                                       | Nominal Load                          | Electrical Life at Rated Load |
| E61                                   | 5A 125/250 VAC<br>5A, 30 VDC optional | 6000                          |
| E62                                   | 10.1A 125/250 VAC; 1/4HP 125VAC       | 6000                          |
| E63                                   | 0.1A 125VAC<br>0.25A, 30 VDC optional | 6000*                         |
| E64                                   | 13A, 125VAC; 10.1A 250VAC             | 6000                          |

\* Indicates 100K UL Life Available. Contact Factory

## Technical Specifications

**Temperature Rating:** -40°C to 85°C 130°C optional using thermoset material. Special part number required.

**Flammability Rating** UL94HB

**Mounting:** Recommended screw: #2-56 round head  
Recommended torque: 2 inch lbs. max


**UL File Number:** E23301

Specifications subject to change

## Material Specifications

**Case:** Thermoplastic  
**Actuating Button:** Thermoplastic Acetal  
**Terminal:** Silver Plated Commercial Bronze  
**Moving Blade:** Beryllium Copper  
**Spring:** Stainless Steel  
**Contacts:** E61, E62, E64: Fine Silver  
E63: Gold Crosspoint  
**Auxiliary Actuator:** Cold Rolled Steel (Nickel-Plated)

PLEASE NOTE



**CHERRY**  
will become  
ZF in 2017.



SUBMINIATURE

# E61-E64 Series

Commonly Stocked Distributor Items / Preferred Part Numbers

| Item Number | Actuator | UL Rating                       | Minimum Operating Force (grams) | Minimum Pretravel inches (mm) | Operating Point* inches (mm)     | Minimum Overtravel inches (mm) | Max. Movement Differential inches (mm) | Terminal Style | Actuation Length** |
|-------------|----------|---------------------------------|---------------------------------|-------------------------------|----------------------------------|--------------------------------|--|----------------|--------------------|
| DE6100AD    |          | 5A 125/250VAC                   | 30                              | .020 (0.76)                   | 0.330 +/- 0.015 (8.38 +/- 0.38)  | 0.040 (1.06)                   | .004 (0.10)                            | 0.093" QC      | N/A                |
| DE6100HD    |          | 5A 125/250VAC                   | 27                              | 0.144 (3.66)                  | 0.350 +/- 0.030 (8.89 +/- 0.76)  | 0.040 (1.02)                   | .020 (0.51)                            | 0.093" QC      | 0.271 (6.88)       |
| DE6100RD    |          | 5A 125/250VAC                   | 30                              | 0.114 (2.90)                  | 0.571 +/- .055 (14.50 +/- 1.4)   | 0.019 (4.83)                   | 0.015 (0.381)                          | 0.093" QC      | 0.203 (5.16)       |
| DE6110AD    |          | 5A 125/250VAC                   | 90                              | .020 (0.76)                   | 0.330 +/- 0.015 (8.38 +/- 0.38)  | 0.040 (1.06)                   | .004 (0.10)                            | Short Solder   | N/A                |
| DE6110HD    |          | 5A 125/250VAC                   | 27                              | 0.144 (3.66)                  | 0.350 +/- 0.030 (8.89 +/- 0.76)  | 0.040 (1.02)                   | .020 (0.51)                            | Short Solder   | 0.271 (6.88)       |
| DE6110RD    |          | 5A 125/250VAC                   | 30                              | 0.114 (2.90)                  | 0.571 +/- .055 (14.50 +/- 1.4)   | 0.019 (4.83)                   | 0.015 (0.381)                          | Short Solder   | 0.203 (5.16)       |
| DE6130AD    |          | 5A 125/250VAC                   | 90                              | .020 (0.76)                   | 0.330 +/- 0.015 (8.38 +/- 0.38)  | 0.040 (1.06)                   | .004 (0.10)                            | 0.110" QC      | N/A                |
| DE6130HD    |          | 5A 125/250VAC                   | 30                              | 0.114 (2.90)                  | 0.571 +/- .055 (14.50 +/- 1.4)   | 0.019 (4.83)                   | 0.015 (0.381)                          | 0.110" QC      | 0.203 (5.16)       |
| DE6150HD    |          | 5A 125/250VAC                   | 9                               | 0.416 (10.57)                 | 0.250 +/- 0.175 (6.89 +/- 0.76)  | 0.050 (1.27)                   | 0.050 (1.27)                           | 0.093" QC      | 0.396 (10.09)      |
| DE6150RD    |          | 5A 125/250VAC                   | 9                               | 0.416 (10.57)                 | 0.250 +/- 0.175 (6.89 +/- 0.76)  | 0.050 (1.27)                   | 0.050 (1.27)                           | Short Solder   | 0.396 (10.09)      |
| DE6200AD    |          | 10 1A, 125/250VAC; 1/4HP 125VAC | 212                             | .020 (0.76)                   | 0.330 +/- 0.015 (8.38 +/- 0.38)  | 0.040 (1.06)                   | .004 (0.10)                            | 0.093" QC      | N/A                |
| DE6200HD    |          | 10 1A, 125/250VAC; 1/4HP 125VAC | 56                              | 0.144 (3.66)                  | 0.350 +/- 0.030 (8.89 +/- 0.76)  | 0.040 (1.02)                   | .020 (0.51)                            | 0.093" QC      | 0.271 (6.88)       |
| DE6200RD    |          | 10 1A, 125/250VAC; 1/4HP 125VAC | 65                              | 0.114 (2.90)                  | 0.571 +/- .055 (14.50 +/- 1.4)   | 0.019 (4.83)                   | 0.015 (0.381)                          | 0.093" QC      | 0.203 (5.16)       |
| DE6210AD    |          | 10 1A, 125/250VAC; 1/4HP 125VAC | 212                             | .020 (0.76)                   | 0.330 +/- 0.015 (8.38 +/- 0.38)  | 0.040 (1.06)                   | .004 (0.10)                            | Short Solder   | N/A                |
| DE6210HD    |          | 10 1A, 125/250VAC; 1/4HP 125VAC | 56                              | 0.144 (3.66)                  | 0.350 +/- 0.030 (8.89 +/- 0.76)  | 0.040 (1.02)                   | .020 (0.51)                            | Short Solder   | 0.271 (6.88)       |
| DE6210RD    |          | 10 1A, 125/250VAC; 1/4HP 125VAC | 65                              | 0.114 (2.90)                  | 0.571 +/- .055 (14.50 +/- 1.4)   | 0.019 (4.83)                   | 0.015 (0.381)                          | Short Solder   | 0.203 (5.16)       |
| DE6230AD    |          | 10 1A, 125/250VAC; 1/4HP 125VAC | 212                             | .020 (0.76)                   | 0.330 +/- 0.015 (8.38 +/- 0.38)  | 0.040 (1.06)                   | .004 (0.10)                            | 0.110" QC      | N/A                |
| DE6230RD    |          | 10 1A, 125/250VAC; 1/4HP 125VAC | 65                              | 0.114 (2.90)                  | 0.571 +/- .055 (14.50 +/- 1.4)   | 0.019 (4.83)                   | 0.015 (0.381)                          | 0.110" QC      | 0.203 (5.16)       |
| DE6250AD    |          | 10 1A, 125/250VAC; 1/4HP 125VAC | 212                             | .020 (0.76)                   | 0.330 +/- 0.015 (8.38 +/- 0.38)  | 0.040 (1.06)                   | .004 (0.10)                            | PCB            | N/A                |
| DE6250RD    |          | 10 1A, 125/250VAC; 1/4HP 125VAC | 33                              | 0.379 (9.63)                  | 0.470 +/- 0.199 (11.93 +/- 0.76) | 0.040 (1.02)                   | 0.050 (1.27)                           | 0.093" QC      | 0.328 (8.29)       |
| DE6260HD    |          | 10 1A, 125/250VAC; 1/4HP 125VAC | 20                              | 0.416 (10.57)                 | 0.250 +/- 0.175 (6.89 +/- 0.76)  | 0.050 (1.27)                   | 0.050 (1.27)                           | Short Solder   | 0.271 (6.88)       |
| DE6300AD    |          | 0 1A, 125VAC                    | 90                              | .020 (0.76)                   | 0.330 +/- 0.015 (8.38 +/- 0.38)  | 0.040 (1.06)                   | .004 (0.10)                            | 0.093" QC      | N/A                |
| DE6300HD    |          | 0 1A, 125VAC                    | 27                              | 0.144 (3.66)                  | 0.350 +/- 0.030 (8.89 +/- 0.76)  | 0.040 (1.02)                   | .020 (0.51)                            | 0.093" QC      | 0.190 (4.90)       |
| DE6300RD    |          | 0 1A, 125VAC                    | 30                              | 0.114 (2.90)                  | 0.571 +/- .055 (14.50 +/- 1.4)   | 0.019 (4.83)                   | 0.015 (0.381)                          | 0.093" QC      | 0.203 (5.16)       |
| DE6310HD    |          | 0 1A, 125VAC                    | 27                              | 0.144 (3.66)                  | 0.350 +/- 0.030 (8.89 +/- 0.76)  | 0.040 (1.02)                   | .020 (0.51)                            | Short Solder   | 0.271 (6.88)       |
| DE6310RD    |          | 0 1A, 125VAC                    | 30                              | 0.114 (2.90)                  | 0.571 +/- .055 (14.50 +/- 1.4)   | 0.019 (4.83)                   | 0.015 (0.381)                          | Short Solder   | 0.203 (5.16)       |
| DE6330RD    |          | 0 1A, 125VAC                    | 30                              | 0.114 (2.90)                  | 0.571 +/- .055 (14.50 +/- 1.4)   | 0.019 (4.83)                   | 0.015 (0.381)                          | 0.093" QC      | 0.203 (5.16)       |
| DE6350HD    |          | 0 1A, 125VAC                    | 9                               | 0.416 (10.57)                 | 0.250 +/- 0.175 (6.89 +/- 0.76)  | 0.050 (1.27)                   | 0.050 (1.27)                           | 0.093" QC      | 0.396 (10.09)      |

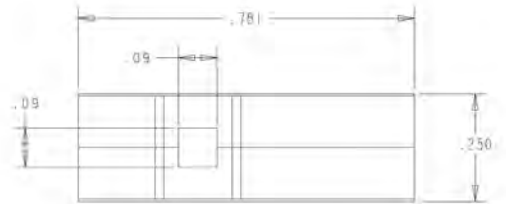
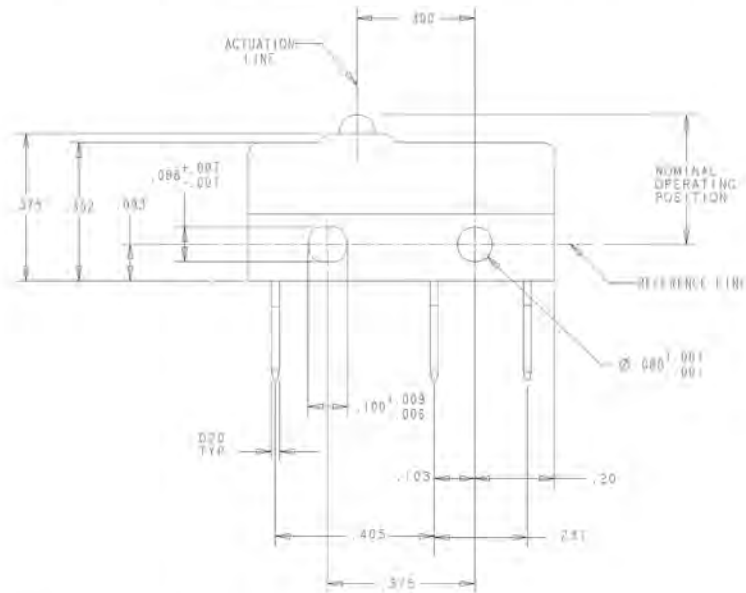
\* Measured using Reference Line shown on drawing on following page.

\*\* Actuator tolerance of +/- 0.031" (0.79 mm)

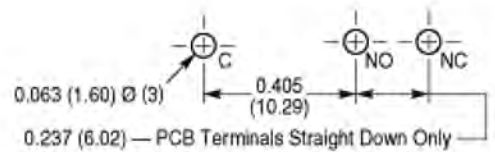
SUBMINIATURE

# E61-E64 Series

Dimensions inches



PCB Terminal Footprint



Terminal Options inches

|                       |                                      |                       |                             |
|-----------------------|--------------------------------------|-----------------------|-----------------------------|
|                       |                                      |                       |                             |
| <p>-00A 0.093" QC</p> | <p>-10A Short Solder<sup>^</sup></p> | <p>-30A 0.110" QC</p> | <p>-50A PCB<sup>^</sup></p> |

<sup>^</sup> Not available on E64 series

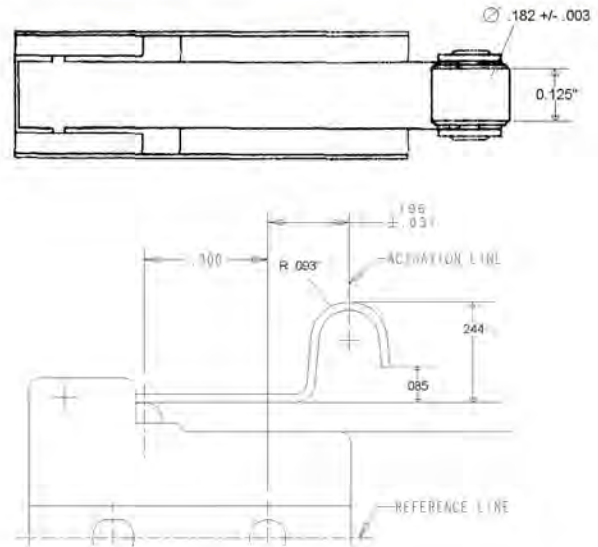
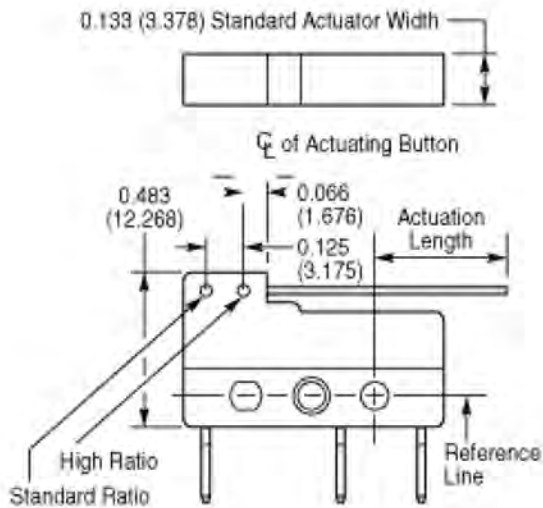
- Consult factory for switch part numbers if ordering pcb terminals

Terminal Mating Connectors:

- 0.093" QC terminals mate with AMP part number 60432-1
- 0.110" QC terminals mate with AMP part number 42068-1



## Actuators



## Ordering Information

1. Select the contact rating prefix you need (E61-E64).
2. Combine the prefix with the corresponding terminal configuration. For example part number E63-50H will provide you with a gold crosspoint subminiature switch with 0.093" QC terminals and a straight lever with a 0.396" actuation length
3. To order a normally open version simply 'add 1' to the suffix to obtain E63-01H and normally closed 'add 2' for part number E63-02H.
4. To order a E62-50K with 0.110" QC terminals, "add" the new terminal code (-30) to the part number – E62-80K will be the resulting part number for a subminiature switch with 0.110" QC terminals and a roller lever with a 0.326" actuation length.

## Contact

Call, fax or visit our  
 Website for more information.

**ZF Electronics Corporation**  
 11200 88th Avenue  
 Pleasant Prairie, WI 53158

Phone: 262.942.6500  
 Web: [www.cherrycorp.com](http://www.cherrycorp.com)  
 Email: [cep\\_sales@zf.com](mailto:cep_sales@zf.com)  
 Fax: 262.942.6566

The manufacturer accepts no  
 liability for errors or non-availability,  
 and reserves the right to change  
 specifications without prior notice.

Technical data relates to product  
 specifications only. Features may  
 differ from those described. Only  
 drawings combined with product  
 specifications shall be deemed  
 binding.

© 2007 ZF Electronics Corporation

Last Updated: 061212