

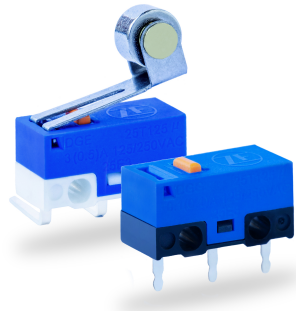
DG SUB-SUBMINIATURE SWITCH

DG sub-subminiature switch

Extremely small dimensions – only 12.8 × 5.8 × 6.6 mm.
Breaking capacity ranges from small switching currents and voltages to low-voltage applications up to 3 A 250 VAC.

Approved according IEC 61058-1 / UL 61058-1
CQC certified



- Available with or without auxiliary actuator
- Use on circuit boards with connections to the left or right and standing
- High mechanical operating life, depending on model > 1,000,000 operations



Technical specifications

Series	DG ①
Contact configuration	S.P.D.T.
Contact gap	< 3 mm
Switching voltage max.	250 VAC
Switching current max.	3 A
Operating force	140 cN without auxiliary actuator
Total travel	0.7 mm without auxiliary actuator
Mechanical life	> 1 × 10 ⁶ operations
Electrical life (max. load)	25,000 operations
Ambient temperature	-25°C to +125°C

Materials

Base	PBT (UL 94V-0)
Cover	PBT (UL 94V-0)
Actuator	PBT (UL 94V-0)
Auxiliary actuator	Stainless steel
Terminals	CuZn striped silver-plated
Contacts DG E	AgNi
DG G	AgNi, gal. Au
Approvals	 
Degree of protection	IP40
Switch interior	

Circuitry ③

Model		Code
S.P.D.T.		3

Terminal type ⑤

Model		Code
PCB terminal, straight		E7
PCB terminal, RH side		E5
PCB terminal, LH side		E4

Generation of order code (example)
The order code consists of 5 parameters:

①	②	③	④	⑤
Series	Electrical rating	Circuitry	Terminal type	Auxiliary actuator
DG = sub-sub-miniature switch	E = 3 A, 250 VAC	3 = S.P.D.T.	E7 = PCB terminal, straight	AA = without auxiliary actuator

- Not every configurable variant is available for order. Please contact us.
- The final two digits of article numbers on commercial documents refer to the index of the respective drawing.

Electrical rating and operating life ②

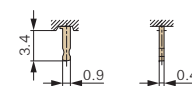
Electrical rating according to	Operating life		
	Nominal load EN/UL	mechanical	Code
EN/UL 61058-1 3(0.5) A, 125/250 VAC	25,000	1 × 10 ⁶	E
0.1(0.1) A, 125/250 VAC	25,000	1 × 10 ⁶	G

Auxiliary actuator ④

Model	Operating force max.(cN)	Max. pretravel (mm)	Min. overtravel (mm)	Differential travel max. (mm)	Max. rest position (mm)	Operating point (mm)	Code
Without auxiliary actuator	140	0.5	0.2	0.1	5.9	5.4 ± 0.2	AA
Auxiliary actuator, straight	45	1.8	0.55	0.5	9.4	6.8 + 0.8/-0.4	LC
Auxiliary actuator roller	60	1.5	0.55	0.5	13.9	12.4 ± 0.5	RD

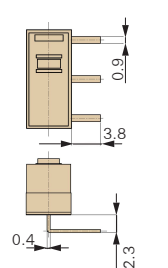
Terminals

PCB terminal

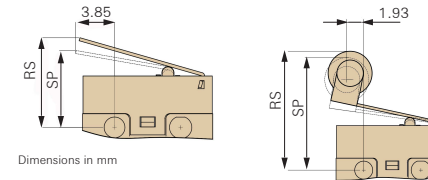


Dimensions in mm

PCB terminal RH side

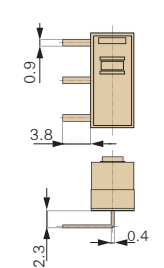


Auxiliary actuator

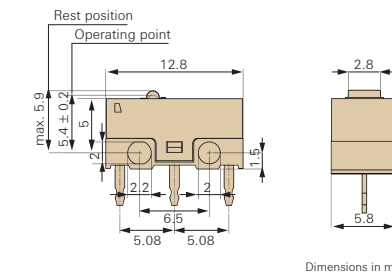
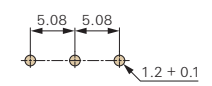


Dimensions in mm

PCB terminal LH side



Drilling pattern



Dimensions in mm