

NOTES: (UNLESS OTHERWISE SPECIFIED):

RATING TO BE MARKED ON ROCKER:

CR US 16A 125VAC 1/4HP
CR US 16A 250VAC 1/4HP
 3/4HP 250 VAC

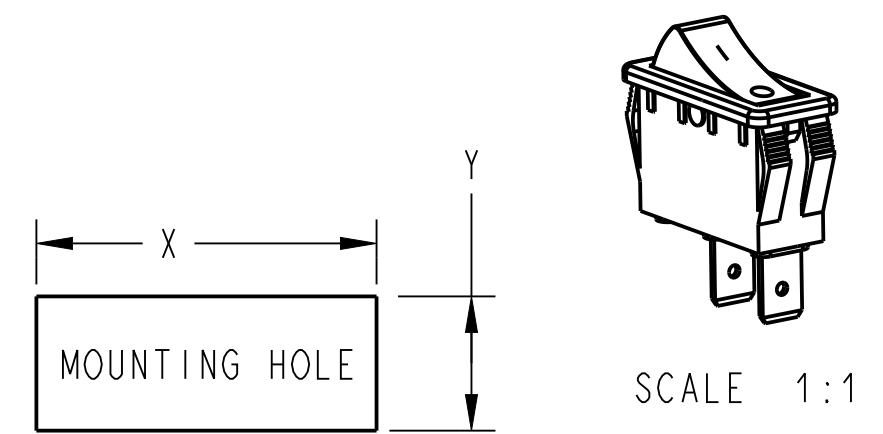
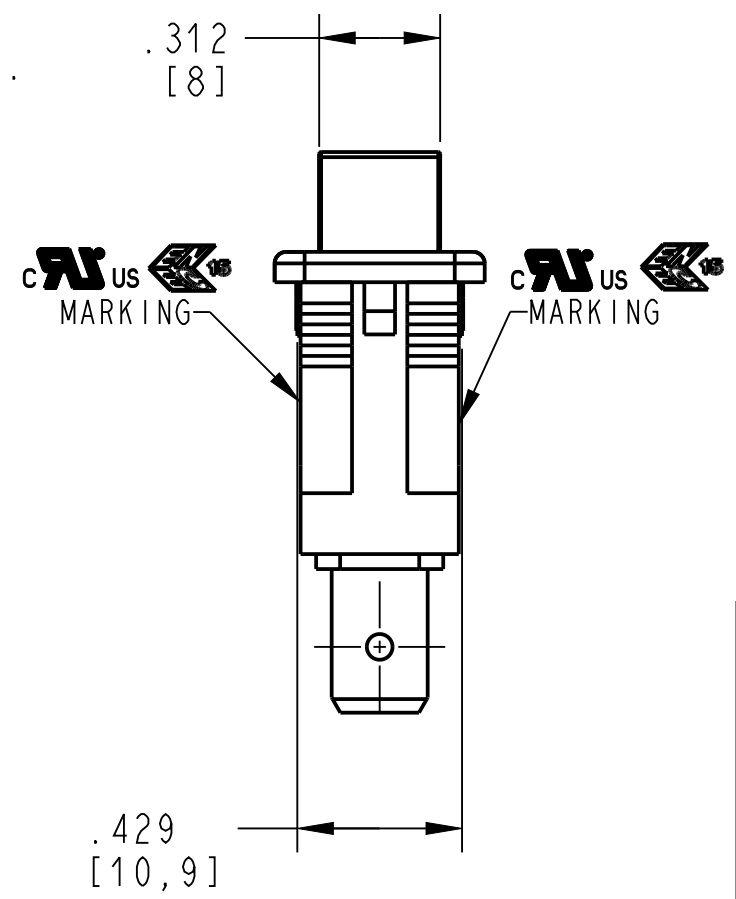
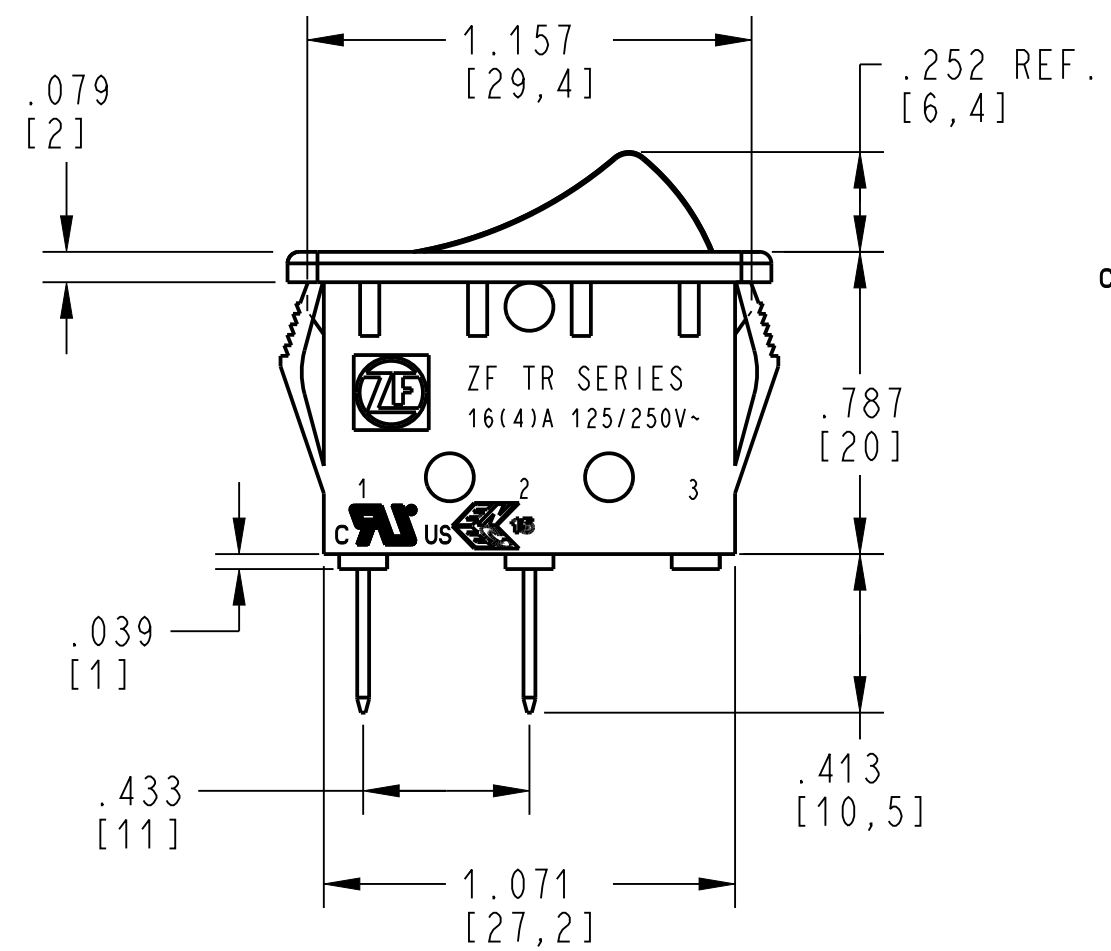
L **CR** US 16(4)A 250V-T85/55 10E3
CR US 16(4)A 125/250V-

DIELECTRIC WITHSTAND VOLTAGE: 1,500 VAC FOR 1 MINUTE.
 INSULATION RESISTANCE: 100MΩ MIN AT 500 VDC
 INITIAL CONTACT RESISTANCE: 20mΩ (MAX.)

MAINTAINED SWITCH SHOWN IN THE NORMALLY OPEN POSITION

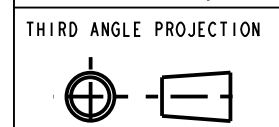
TERMINALS (2): QUICK CONNECT .248+ .004/- .002
 [6,3+0,1/-0,05] X .031±.001[0,8±0,03]
 HOLE DIAMETER .067±.004[1,7±0,1]

RECOGNIZED TO U.S. AND CANADIAN REQUIREMENTS
 UNDER THE COMPONENT RECOGNITION PROGRAM OF
 UNDERWITERS LABORATORIES, INC.



DIM. X	DIM. Y	DIM. Z = PANEL THICKNESS
1.181+.004/- .000 [30.0+0.1/-0.0]	.433+.004/- .000 [11.0 +0.1\ -0.0]	.030 TO .049 [0.75 TO 1.25]
1.189+.004/- .000 [30.2+0.1/-0.0]	.433+.004/- .000 [11.0 +0.1\ -0.0]	.049 TO .079 [1.25 TO 2.00]
1.200+.004/- .000 [30.5+0.1/-0.0]	.433+.004/- .000 [11.0 +0.1\ -0.0]	.079 TO .118 [2.0 TO 3.0]

DWN: R. YANEZ
 APVD: E. LESLIE
 DATE: 10-May-10



CONFIDENTIAL AND PROPRIETARY:
 ALL INFORMATION OR INVENTIONS CONTAINED IN THIS
 DOCUMENT OR DERIVED FROM THE INFORMATION THERE
 IN IS OWNED BY ZF ELECTRONIC SYSTEMS, AND IS
 CONFIDENTIAL AND PROPRIETARY. REVIEW OR
 POSSESSION OF THIS DOCUMENT INDICATES AGREEMENT
 THAT SUCH INFORMATION AND INVENTIONS WILL NOT BE
 DISCLOSED, REPRODUCED OR OTHERWISE USED IN ANY
 WAY WITHOUT EXPRESS WRITTEN PERMISSION FROM AN
 AUTHORIZED REPRESENTATIVE OF ZF ELECTRONIC
 SYSTEMS.



ZF Electronic Systems

PLEASANT PRAIRIE, WISCONSIN U.S.A.

NAME / DESCRIPTION
SPECIFICATION DRAWING

L	Z000718582	25-JAN-24	TCH	ELL
REV	ECO NO.	DATE	PREP	APVD

PROJECT/ CSR
 N/A

TOLERANCE UNLESS SPECIFIED			
DWG UNITS	X.XX	X.XXX	ANGLES
INCHES	± 0.02	± 0.012	± 5.0 °

B ITEM NO. TRG22F2FBNN
 SCALE: 2:1 SH 1 OF 1

ORIGINAL ON PRO/E