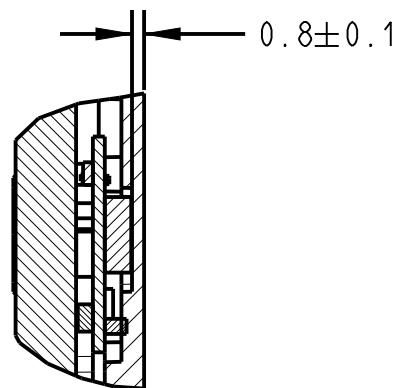
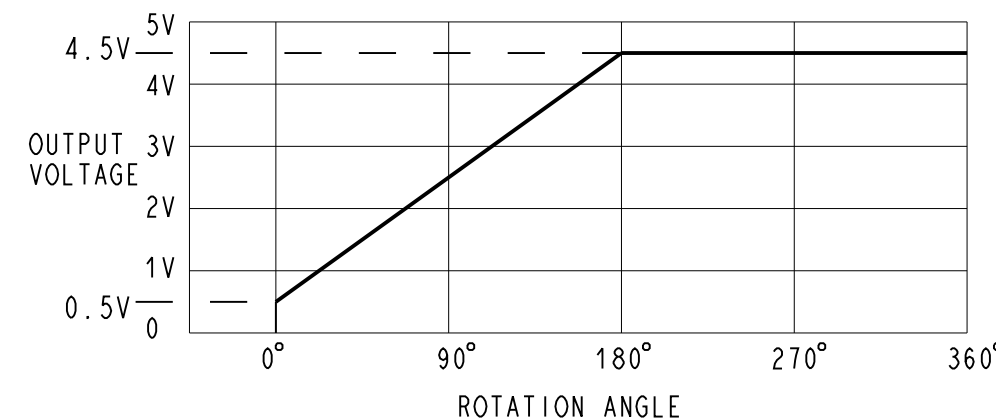
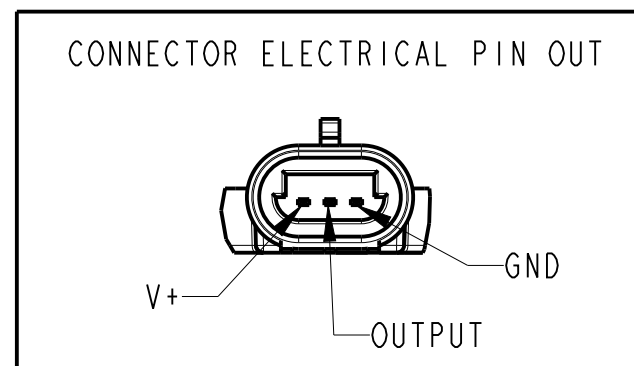


DETAIL B  
SCALE 2:1



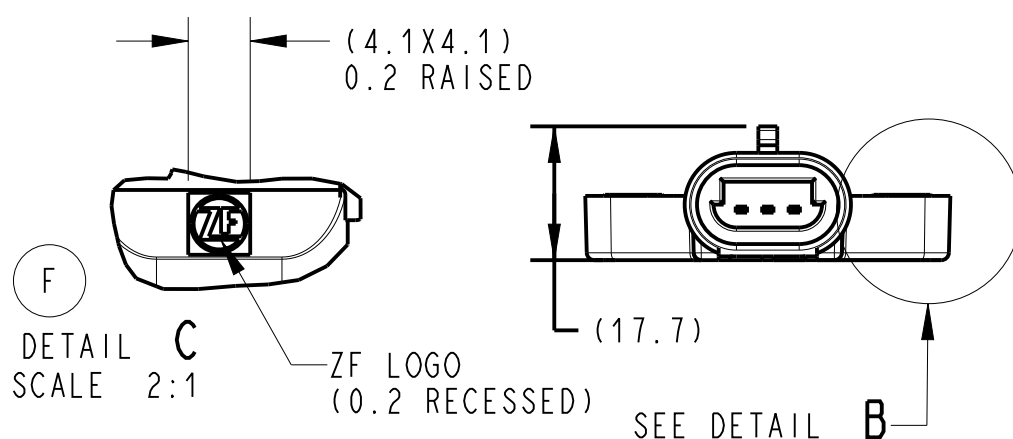
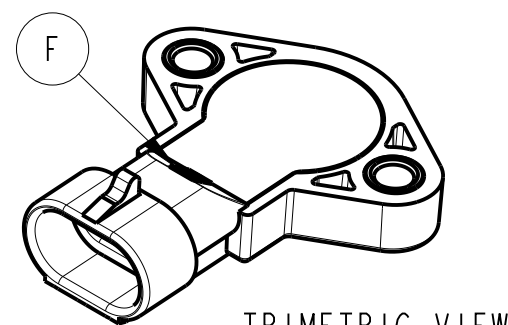
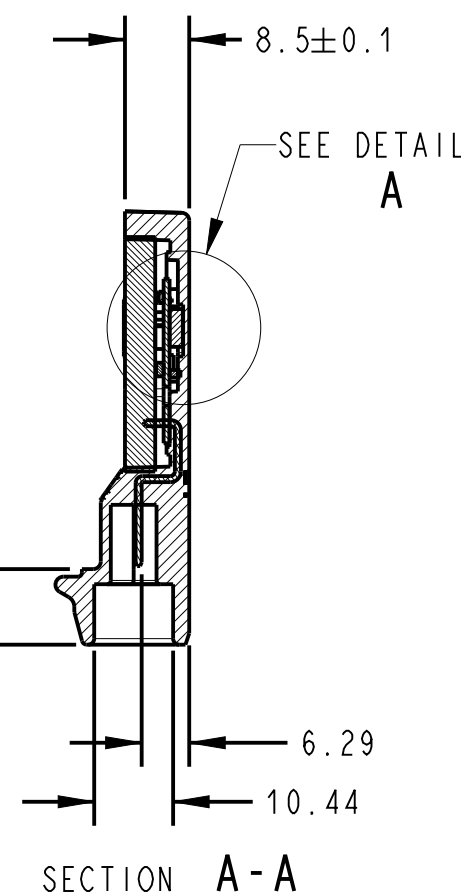
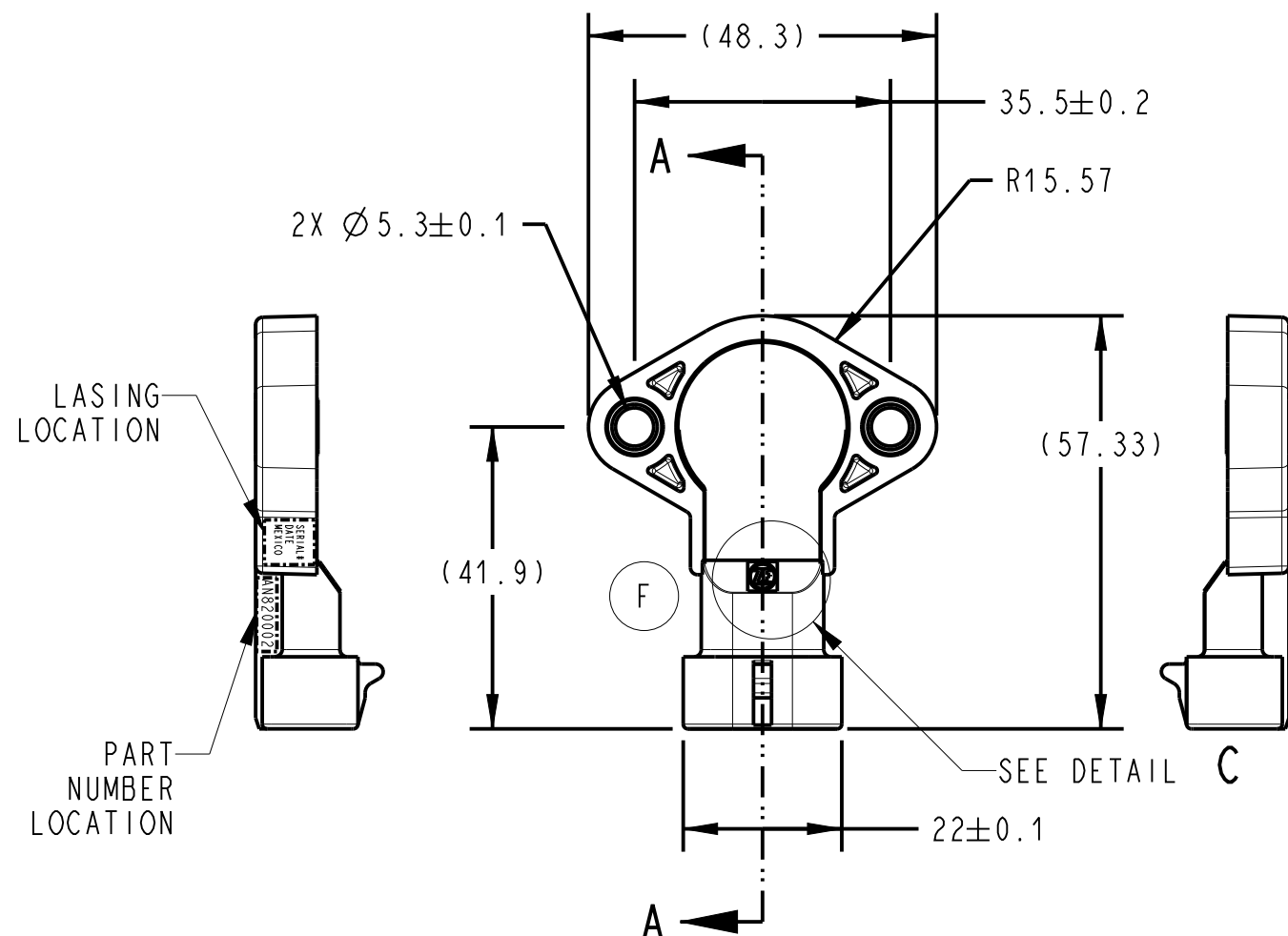
DETAIL A  
SCALE 2:1



SENSOR OUTPUT SIGNAL  
(TYPICAL BASED ON 5V SUPPLY)  
SEE NOTE 2 FOR OUTPUT TOLERANCE

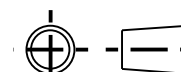
NOTES:

1. RECOMMENDED FASTENER: M5 SCREW
2. REFERENCE ZF ELECTRONIC SYSTEMS  
PRODUCT SPECIFICATION PSPEC-00058
3. SENSOR'S CONNECTOR MATE WITH PACKARD  
METRI-PACK 150 SERIES CONNECTOR PN 12162185.  
USE WITH PACKARD TERMINALS PN 12124075 OR  
PACKARD EQUIVALENT.
4. ALL SENSOR'S ARE 100% FUNCTIONALLY TESTED.
5. OPERATING TEMPERATURE RANGE: -40°C TO +150°C
6. LASER ETCHED DESCRIPTION:  
ZF ELECTRONIC SYSTEMS PART NUMBER  
MEXICO  
ZF ELECTRONIC SYSTEMS DATE CODE (YR/WK)  
SERIAL NUMBER (4 DIGITS)
7. RoHS COMPLIANT PART.



DWN: AF  
APVD: SM  
DATE: 18-Oct-05

THIRD ANGLE PROJECTION



PROJECT/ CSR

CONFIDENTIAL AND PROPRIETARY:  
ALL INFORMATION OR INVENTIONS CONTAINED IN THIS  
DOCUMENT OR DERIVED FROM THE INFORMATION THERE  
IN IS OWNED BY ZF ELECTRONIC SYSTEMS, AND IS  
CONFIDENTIAL AND PROPRIETARY. REVIEW OR  
POSSESSION OF THIS DOCUMENT INDICATES AGREEMENT  
THAT SUCH INFORMATION AND INVENTIONS WILL NOT BE  
DISCLOSED, REPRODUCED OR OTHERWISE USED IN ANY  
WAY WITHOUT EXPRESS WRITTEN PERMISSION FROM AN  
AUTHORIZED REPRESENTATIVE OF ZF ELECTRONIC  
SYSTEMS.

TOLERANCE UNLESS SPECIFIED

DWG UNITS	X.XX	X.XXX	ANGLES
MM.	± 0.3	± 0.10	± 1.0 °



ZF Electronic Systems

11200 88th AVE. PLEASANT PRAIRIE, WI 53158

NAME / DESCRIPTION

TLAP SENSOR, 180°

B ITEM NO. AN820001

SCALE: 1:1 SH 1 OF 1

F	Z000362283	29-Aug-16	GP	TB
REV	ECO NO.	DATE	PREP	APVD