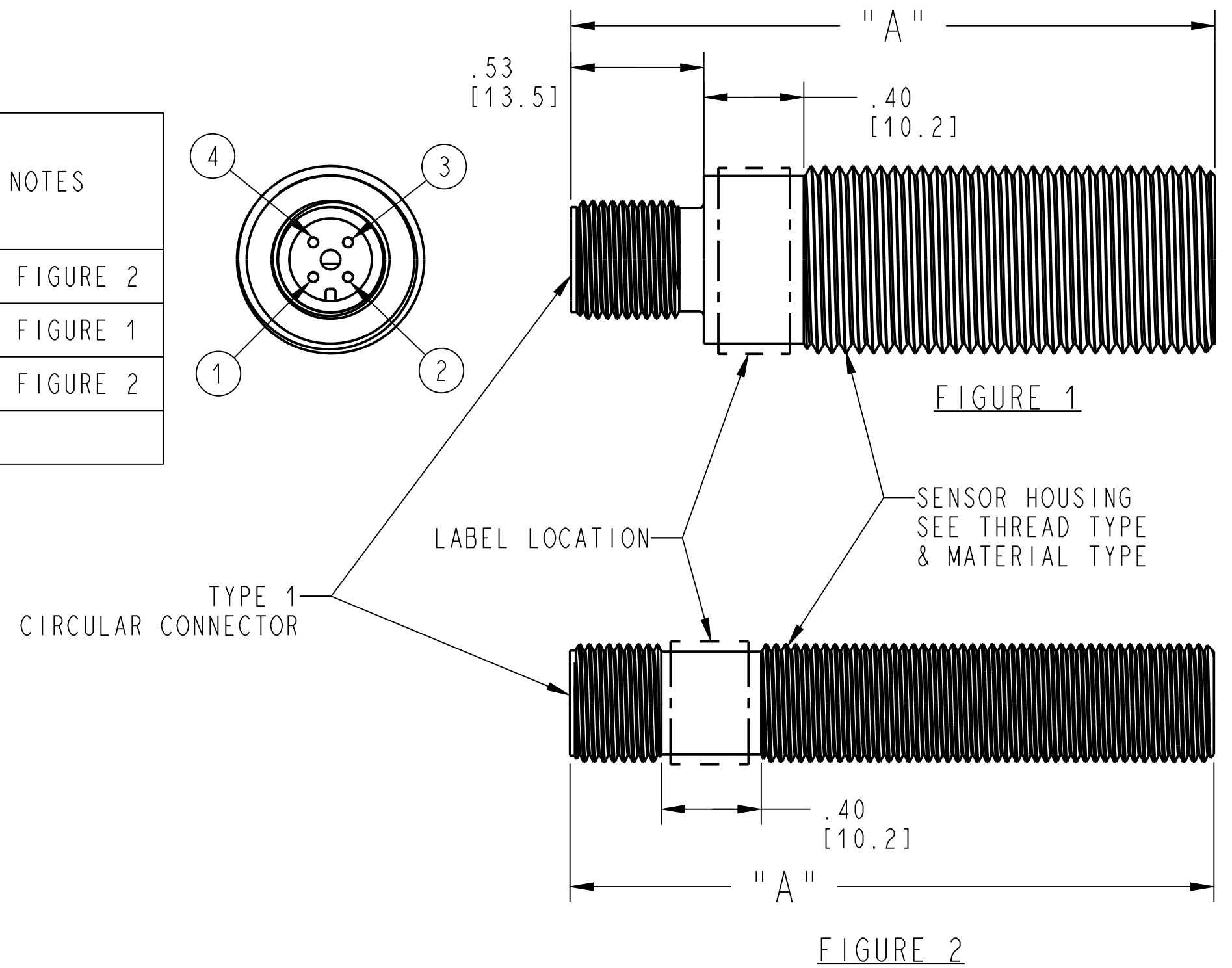


ZF ELECTRONICS				OUTPUT					NOTES
PART NUMBER	LENGTH "A"	THREAD TYPE	MATERIAL TYPE	CONNECTOR TYPE	SUPPLY V <sub>cc</sub>	GROUND	OUTPUT V <sub>o</sub>	DIRECTION	
GS100101	65.5mm	1	1	1	1	3	4	N/A	SEE FIGURE 2
GS100201	65.5mm	2	1	1	1	3	4	N/A	SEE FIGURE 1
GS100501	65.5mm	1	2	1	1	3	4	N/A	SEE FIGURE 2



NOTES:

- ALL SENSORS ARE 100% FUNCTIONAL TESTED.
- PRODUCT IS ROHS COMPLIANT.
- OPERATING TEMPERATURE RANGE: -40°C to +125°C.
- LABEL LOCATION AS SPECIFIED IN EACH FIGURE.
- LABEL TO INCLUDE:  
ZF MEXICO  
ZF PART NUMBER  
DATE CODE (YY/WW - A/B SHIFT CODE)
- REFER TO PRODUCT SPECIFICATION DOCUMENT NUMBER PSPEC-00022 FOR ADDITIONAL INFORMATION.
- FOR GS100101, GS100201 AND GS100501 PART TO MATE WITH MOLEX 120065 SERIES CONNECTORS OR EQUIVALENT.

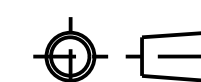
MATERIAL TYPE	DESCRIPTION
1	STAINLESS STEEL TYPE 303, NON-MAGNETIC
2	ANODIZED ALUMINUM METRIC = RED, ENGLISH = BLACK

THREAD TYPE	DESCRIPTION
1	M12 X 1 CLASS 6g
2	M18 X 1 CLASS 6g

CONNECTOR TYPE	DESCRIPTION
1	M12 X 1 CIRCULAR CONNECTOR MATERIAL: NYLON (IEC60947-5-2)

DWN: DSK  
APVD: JR  
DATE: 07-Jan-99

THIRD ANGLE PROJECTION



CONFIDENTIAL AND PROPRIETARY:  
ALL INFORMATION OR INVENTIONS CONTAINED IN THIS DOCUMENT OR DERIVED FROM THE INFORMATION THEREIN IS OWNED BY ZF ELECTRONIC SYSTEMS, AND IS CONFIDENTIAL AND PROPRIETARY. REVIEW OR POSSESSION OF THIS DOCUMENT INDICATES AGREEMENT THAT SUCH INFORMATION AND INVENTIONS WILL NOT BE DISCLOSED, REPRODUCED OR OTHERWISE USED IN ANY WAY WITHOUT EXPRESS WRITTEN PERMISSION FROM AN AUTHORIZED REPRESENTATIVE OF ZF ELECTRONIC SYSTEMS.

(K)



ZF Electronic Systems

PLEASANT PRAIRIE, WISCONSIN U.S.A.

NAME / DESCRIPTION

SPEED SENSOR

K	Z000635220	2022-03-09	RJC	TB
REV	ECO NO.	DATE	PREP	APVD

PROJECT/ CSR	DWG UNITS	X.XX	X.XXX	ANGLES
	INCHES	± 0.01	± 0.005	± 2.0 °

C	ITEM NO.	ES021036
SCALE:	1:1	SH 1 OF 3

ORIGINAL ON PROJE

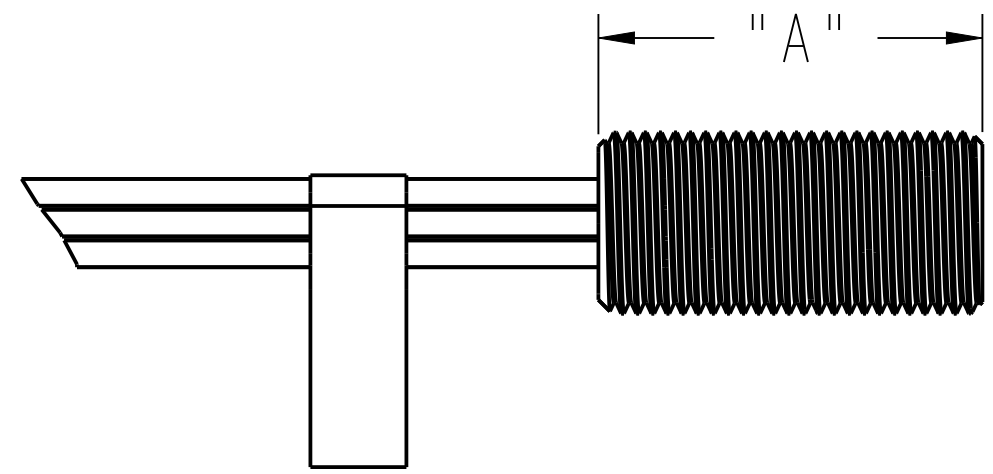
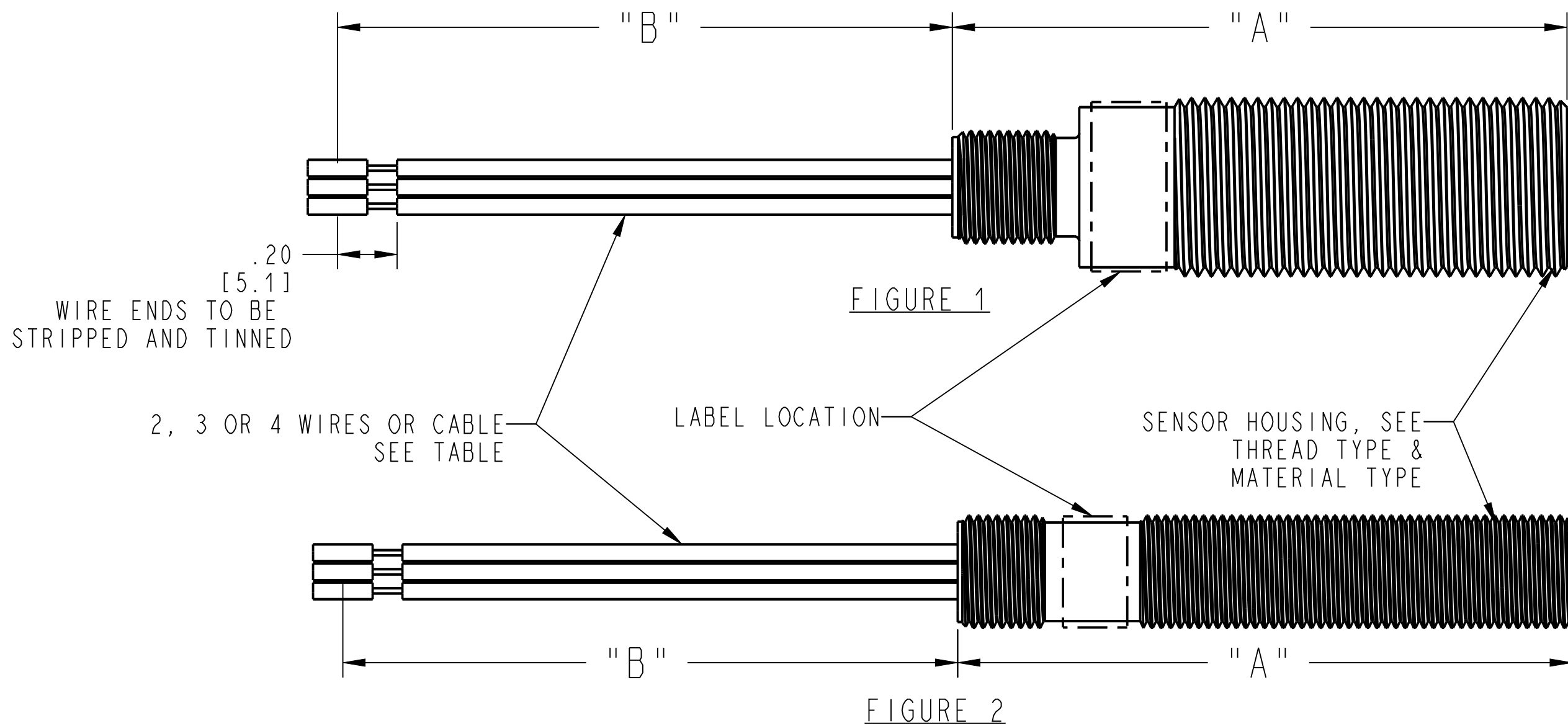


FIGURE 3

THREAD TYPE	DESCRIPTION
1	15/32 - 32 UNS 2A
2	M12 X 1 CLASS 6g
3	M18 X 1 CLASS 6g

ZF ELECTRONICS PART NUMBER	HOUSING			CONNECTION		OUTPUT			NOTES
	LENGTH "A"	THREAD TYPE	MATERIAL TYPE	WIRE TYPE	WIRE LENGTH "B"	SUPPLY V <sub>cc</sub>	GROUND	OUTPUT V <sub>o</sub>	
GS100102	65.5mm	2	1	2	39.4"/1000mm	BROWN	BLUE	BLACK	SEE FIGURE 2
GS100202	65.5mm	3	1	2	39.4"/1000mm	BROWN	BLUE	BLACK	SEE FIGURE 1
GS100502	65.5mm	2	2	1	39.4"/1000mm	BROWN	BLUE	BLACK	SEE FIGURE 2
GS100701	1.00"	1	2	1	39.4"/1000mm	BROWN	BLUE	BLACK	SEE FIGURE 3

MATERIAL TYPE	DESCRIPTION
1	STAINLESS STEEL TYPE 303, NON-MAGNETIC
2	ANODIZED ALUMINUM METRIC = RED, ENGLISH = BLACK

WIRE TYPE	DESCRIPTION
1	20 GAUGE WIRE; XL POLYOLEFIN 150 DEG C, MEETS SAEJ-1128TXL
2	CABLE, 3 CONDUCTOR 22 GAUGE XL POLYOLEFIN, 150 DEG C

(K)

**ZF** ZF Electronic Systems  
PLEASANT PRAIRIE, WISCONSIN U.S.A.

CONFIDENTIAL AND PROPRIETARY: ALL INFORMATION OR INVENTIONS CONTAINED IN THIS DOCUMENT OR DERIVED FROM THE INFORMATION THEREIN IS OWNED BY ZF ELECTRONIC SYSTEMS, AND IS CONFIDENTIAL AND PROPRIETARY. REVIEW OR POSSESSION OF THIS DOCUMENT INDICATES AGREEMENT THAT SUCH INFORMATION AND INVENTIONS WILL NOT BE DISCLOSED, REPRODUCED OR OTHERWISE USED IN ANY WAY WITHOUT EXPRESS WRITTEN PERMISSION FROM AN AUTHORIZED REPRESENTATIVE OF ZF ELECTRONIC SYSTEMS.

C	ITEM NO.	ES021036
REV:	K	SH 2 OF 3

ORIGINAL ON PROJE

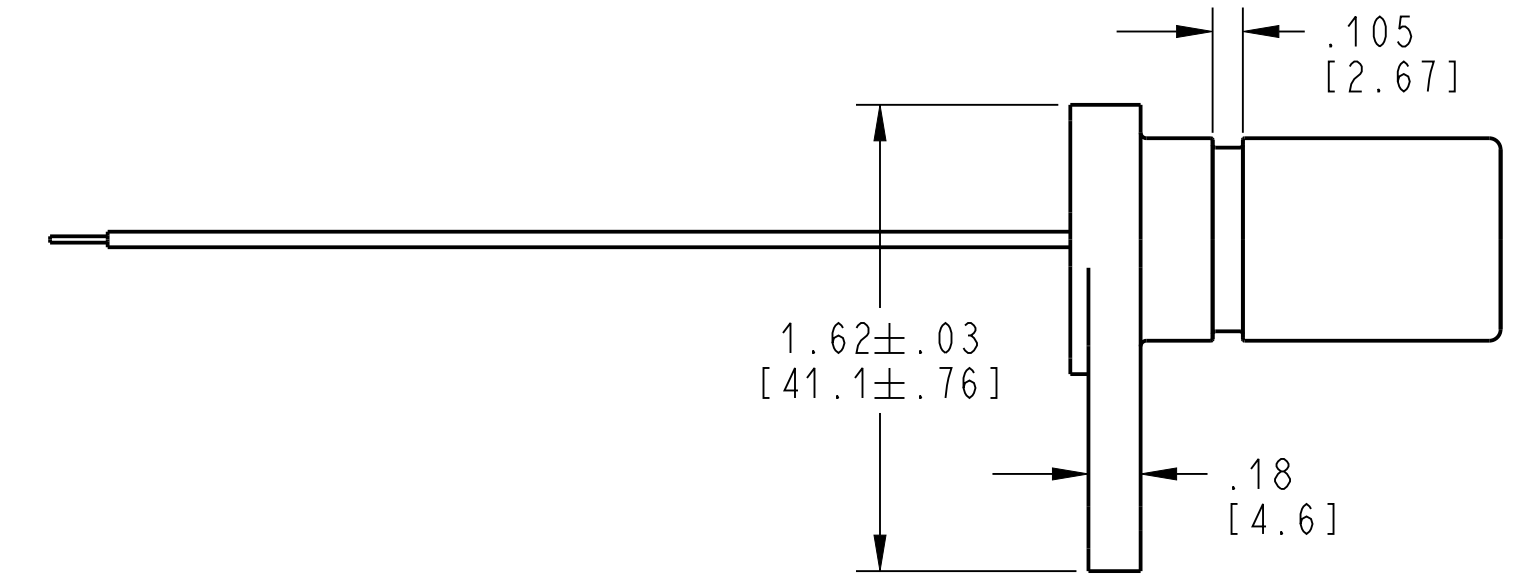
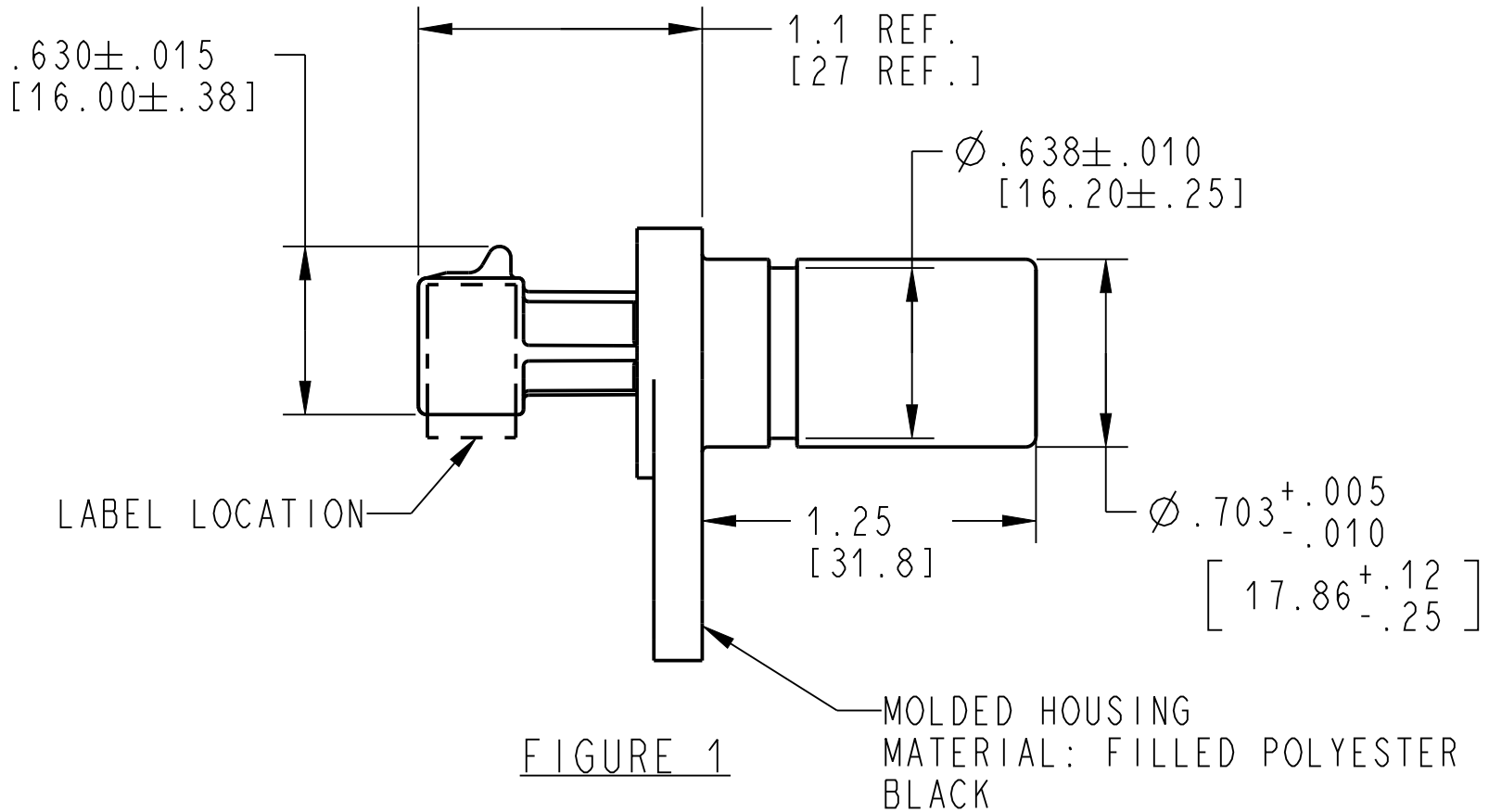
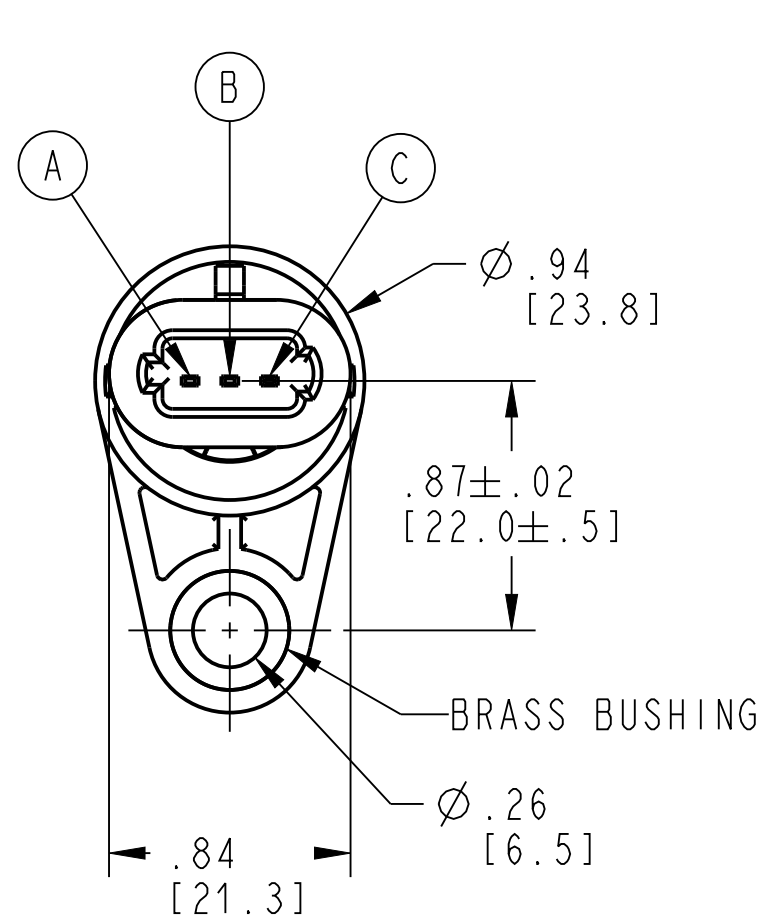
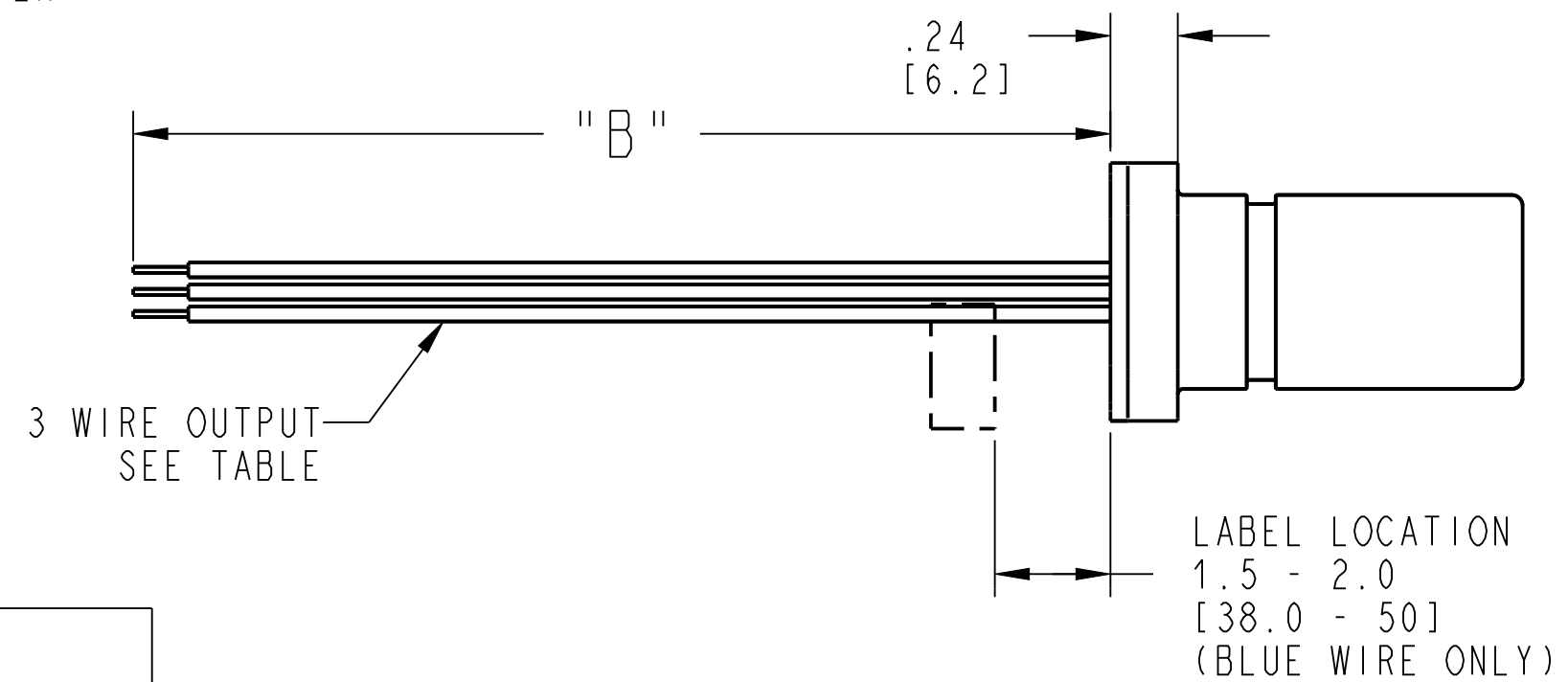


FIGURE 2



CONNECTOR TYPE	DESCRIPTION
1	DELPHI METRI-PACK 150 MOLDED CONNECTOR MATERIAL: FILLED POLYESTER, BLACK MATES WITH 12162280 & 12162279

ZF ELECTRONICS PART NUMBER	CONNECTION			OUTPUT			NOTES
	WIRE TYPE	CONNECTOR TYPE	WIRE LENGTH "B"	SUPPLY V <sub>cc</sub>	GROUND	OUTPUT V <sub>o</sub>	
GS101201	N/A	1	N/A	A	C	B	SEE FIGURE 1
GS101202	1	N/A	39.4"/1000mm	BROWN	BLUE	BLACK	SEE FIGURE 2

WIRE TYPE	DESCRIPTION
1	20 GAUGE WIRE; XL POLYOLEFIN 150 DEG C, MEETS SAEJ-1128TXL

(K)

**ZF** ZF Electronic Systems  
PLEASANT PRAIRIE, WISCONSIN U.S.A.

C ITEM NO. ES021036  
REV: K SH 3 OF 3

CONFIDENTIAL AND PROPRIETARY: ALL INFORMATION OR INVENTIONS CONTAINED IN THIS DOCUMENT OR DERIVED FROM THE INFORMATION THEREIN IS OWNED BY ZF ELECTRONIC SYSTEMS, AND IS CONFIDENTIAL AND PROPRIETARY. REVIEW OR POSSESSION OF THIS DOCUMENT INDICATES AGREEMENT THAT SUCH INFORMATION AND INVENTIONS WILL NOT BE DISCLOSED, REPRODUCED OR OTHERWISE USED IN ANY WAY WITHOUT EXPRESS WRITTEN PERMISSION FROM AN AUTHORIZED REPRESENTATIVE OF ZF ELECTRONIC SYSTEMS.

ORIGINAL ON PROJE