

# Panel Mount Pushbutton

## Single Pole

E6 F6 series



### Features

- Choice of Momentary, Push-Pull (reset) and Cheat Interlock
- Long life coil spring snap action mechanism
- Agency approved extended life versions available
- Snap in mounting
- ENEC available on select models
- **Cadmium** contacts for high load requirements

### Standard Parts

0E65-00A0    0E68-00A0    0E68-30A0    0E68-40A0    0E69-00A0    0E69-30A0    0E69-40A0  
0F69-00A0    0F69-30A0    0F69-65A0    0F69-66A0

#### Notes:

Part numbers with a leading 0 and a trailing 0 are functionally no different than without a leading / trailing 0.

### Electrical Specifications – Contact Ratings

Switch Series	According to EN61058-1		According to UL1054	
	Nominal Load	Operating Cycles	Nominal Load	Operating cycles
0E65	N/A	N/A	16 A, 125/250 VAC; 1/3 HP; 125/250 VAC	6,000 *
0E68	N/A	N/A	0.1 A 125 VAC	6,000 *
0F68	0.1(0.05) A, 125 VAC;	50,000		
0E69	N/A	N/A	10 A, 125/250 VAC; 1/3 HP, 125/250 VAC	6,000*
0F69	10(4)A, 250 VAC	50,000		

\*Extended life UL versions available. Contact factory for more information. Special part number required.

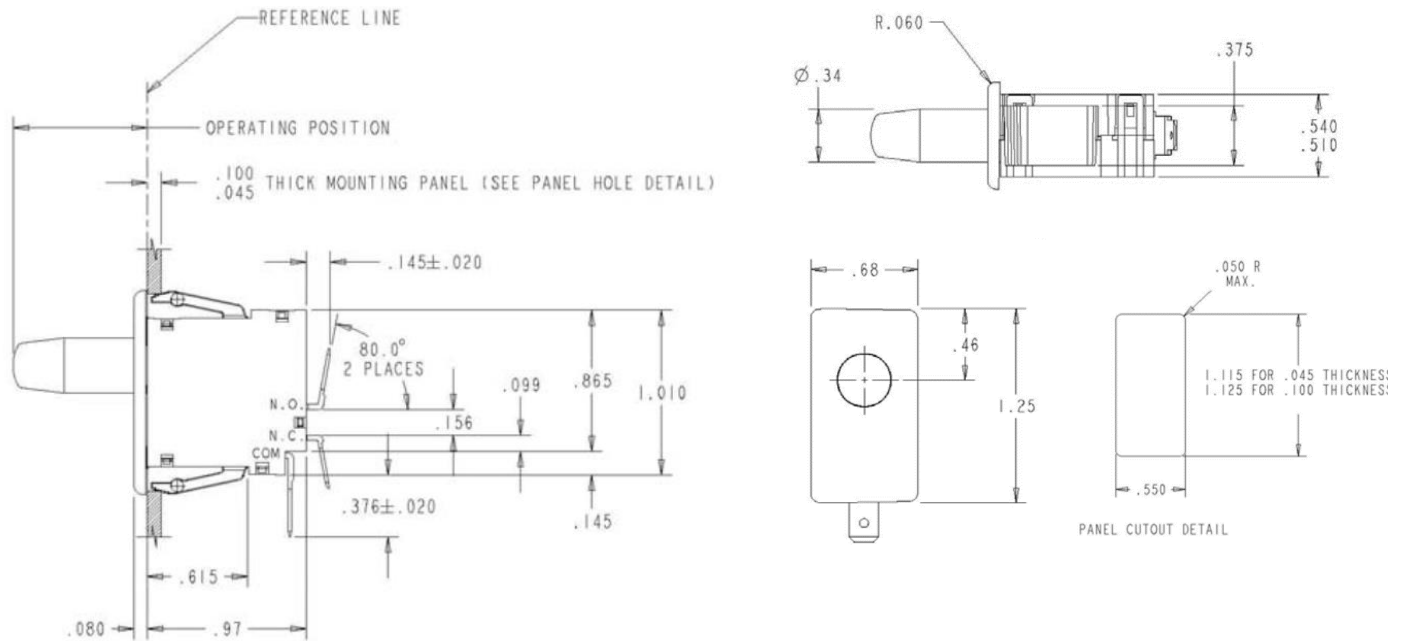
### Environmental and Mechanical Specifications

Operating force	285 – 708 grams
Temperature range	-40 °C to 85 °C
Protection class	IP40
Terminal dimensions	Up to 10 A: 4.8 mm x 0.5 mm or 4.8 mm x 0.8 mm; 16 A: 6.3 mm x 0.8 mm

### Material Specifications

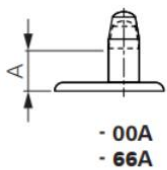
Case	Thermoplastic Polyester
Actuator button	Thermoplastic Acetal
Terminals	Brass (Common Ag plated)
Moving blade	Beryllium Copper
Spring	Stainless Steel
Contacts	Silver Alloy, Gold Alloy

## Dimensions (mm) and terminal configurations

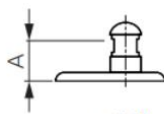


## Button details

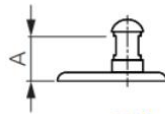
### Actuator (function)



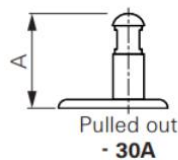
- 00A  
- 66A  
Basic momentary  
(Makes contact while actuated)



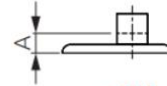
- 20A  
Push-pull (Push:  
makes contact, Pull:  
reset position)



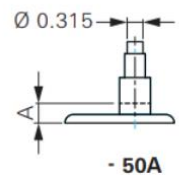
- 30A  
- 65A  
Momentary  
(If pushed: normal  
pushbutton function)



Pulled out  
- 30A  
Cheat interlock  
(If pulled: permanent  
contact function)



- 40A  
Short button momentary  
(Makes contact while being actuated)



Ø 0.315  
- 50A  
Momentary – for auxiliary  
button (Makes contact while being actuated)