

NOTES: (UNLESS OTHERWISE SPECIFIED)

RATING: 10A, 125 VAC; 6A, 250 VAC us
1/2 HP, 125/250 VAC us

20A, 14VDC, 10A 28VDC
(NOT AGENCY APPROVED FOR DC)

U.L. ENDURANCE RATING 6000 CYCLES.

INITIAL CONTACT RESISTANCE: 50m Ω (MAX)

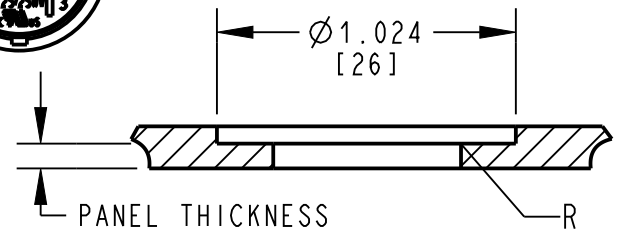
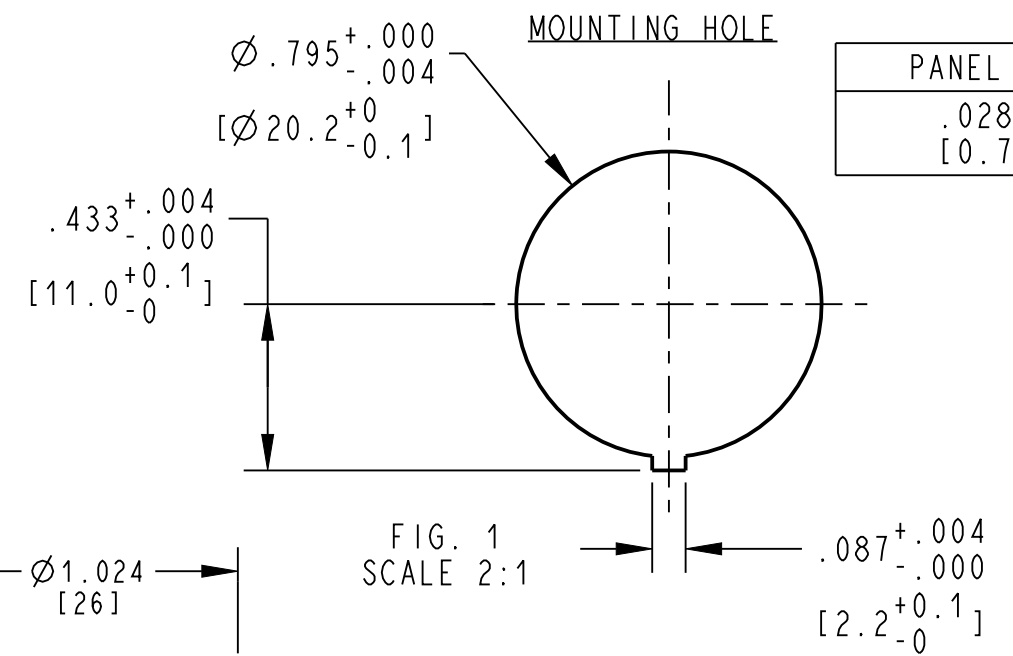
INSULATION RESISTANCE: 500 VDC 100M Ω (MIN)


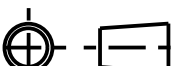
DIELECTRIC STRENGTH: 1500 VAC FOR 1 MINUTE.

WATERPROOF: IP65 CAPABLE

OPERATION TEMPERATURE: -25°C TO +85°C

RECOGNIZED TO U.S. AND CANADIAN REQUIREMENTS
UNDER THE COMPONENT RECOGNITION PROGRAM
OF UNDERWRITERS LABORATORIES, INC.



DWN: C RAMOS		<div>CONFIDENTIAL AND PROPRIETARY: ALL INFORMATION OR INVENTIONS CONTAINED IN THIS DOCUMENT OR DERIVED FROM THE INFORMATION THERE IN IS OWNED BY ZF ELECTRONIC SYSTEMS, AND IS CONFIDENTIAL AND PROPRIETARY. REVIEW OR POSSESSION OF THIS DOCUMENT INDICATES AGREEMENT THAT SUCH INFORMATION AND INVENTIONS WILL NOT BE DISCLOSED, REPRODUCED OR OTHERWISE USED IN ANY WAY WITHOUT EXPRESS WRITTEN PERMISSION FROM AN AUTHORIZED REPRESENTATIVE OF ZF ELECTRONIC SYSTEMS.</div>				<div><div>ZF Electronic Systems</div></div>		
APVD: J RUMMELHART						PLEASANT PRAIRIE, WISCONSIN U.S.A.		
DATE: 17-Jun-08						NAME / DESCRIPTION		
THIRD ANGLE PROJECTION						KF-SPST (ON)-OFF NON LIGHTED		
								
PROJECT/ CSR		TOLERANCE UNLESS SPECIFIED				B	ITEM NO. KFB2DNA1BBB	
4000000138		DWG UNITS	X.XX	X.XXX	ANGLES		SCALE: 1:1 SH 1 OF 1	
		INCH (mm)	± 0.02	± 0.012	± 5.0 °			

ORIGINAL ON PROJE