

Sub-subminiature Switch

Sliding Contact Switch

WG Series



Features

- Sub-subminiature switch with high contact stability for low switching loads
- Silent operation due to sliding contacts
- Smallest dimensions
- Temperature range -40 °C to +85 °C
- High operating life
- Different connection possibilities, also with leads available on request
- Engineered based on market-proven SK/SJ switch series (millions in field)
- IP67

Standard Parts¹

WG1E-A6A0

WG1E-B2B1

¹The part number configuration matrix below provides details to the part numbers above.

For configurable part numbers that are not listed above, not listed in your region, or for custom part numbers, contact the factory or your distributor:

switches-sensors@zf.com

Order Code Matrix

WG	1	E	- A	2	A0
Switch type	Electr. rating (ohmic load)	Contact configuration	Terminal configuration	Fixation	Auxiliary actuator
WG	1 = 0,010 / 0,1A 12 VDC	E = single pole single throw normally open F = single pole single throw normally closed	A = solder terminal B = PCB terminal, straight *C = PCB terminal, lateral (depending on side of posts)	2 = without posts (aux. actuator possible) 3 = No aux. actuator with posts on one side (left / right possible) 4 = Aux. actuator + posts right 5 = Aux. actuator + posts left 6 = posts on both sides (aux. actuator possible) 7 = with groove (aux. actuator possible) - no posts	A0 = without auxiliary actuator B1 = auxiliary actuator sim. Roller C1 = auxiliary actuator straight

*only in combination with posts

Electrical Specifications – Contact Ratings

Type of load	Rating	Electrical life
Resistor load (ohmic load)	10 mA / 12 VDC	min. 300,000
Without capacitive input circuit	100 mA / 12 VDC	min. 100,000
Capacitive load	10 mA / 12 VDC	min. 100,000

<https://switches-sensors.zf.com/>

Page 1 of 3, Last update 2025-07-08, Specifications subject to change without notice. In case there are any deviations, the drawing details have priority.



Environmental and Mechanical Specifications

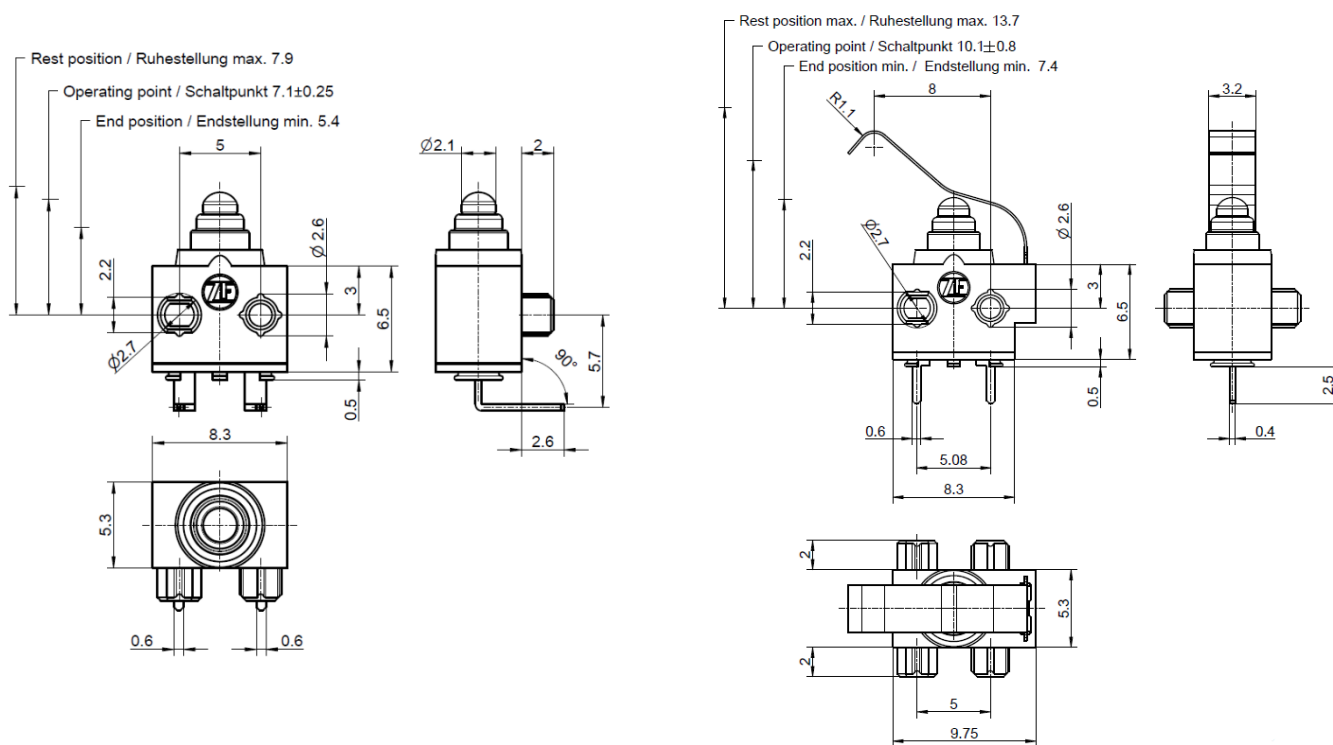
Operating force	150 – 300 cN (depending on variant, with or without auxiliary actuator)
Mechanical life	up to 300,000 operating cycles (depending on variant)
Temperature range	-40 °C up to +85 °C
Protection class	IP67

Material Specifications

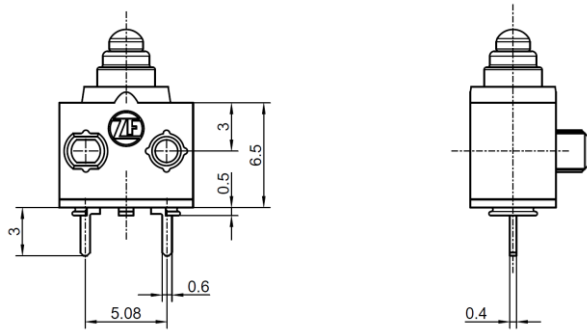
Cover	PA66
Base	PA66
Actuator	POM
Gasket	Silicone rubber
Contact terminals	CuSn6 silver plated
Contact blade	CuSn8 silver plated
Spring	X5CrNi18-10
Auxiliary actuator	X10CrNi18-8

Dimensions (mm) and terminal configurations

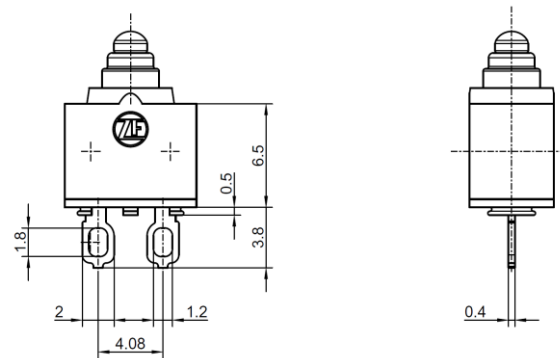
WG Standard



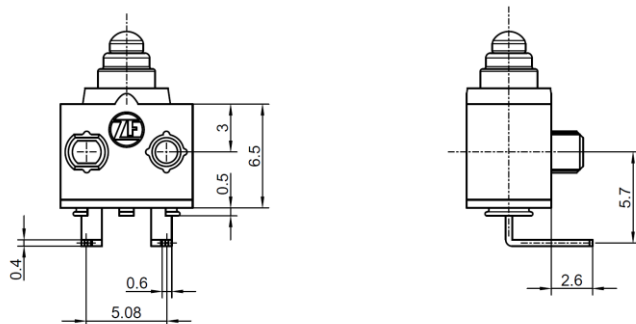
PCB terminal, straight



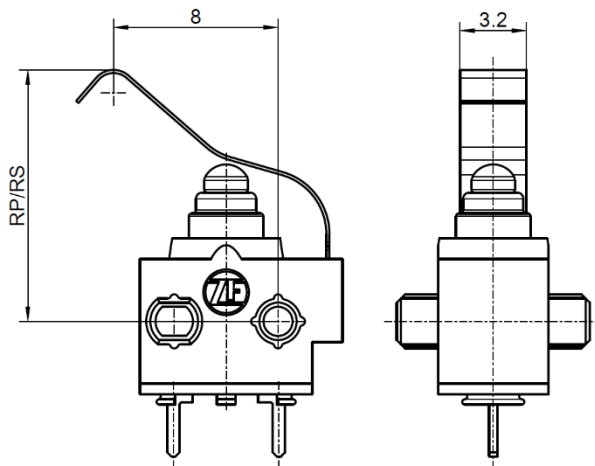
Solder terminal



PCB terminal, lateral



Auxiliary actuator version simulated roller



Auxiliary actuator version straight

