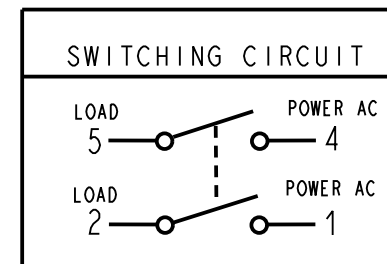


SCALE 1:1



NOTES: (UNLESS OTHERWISE SPECIFIED):

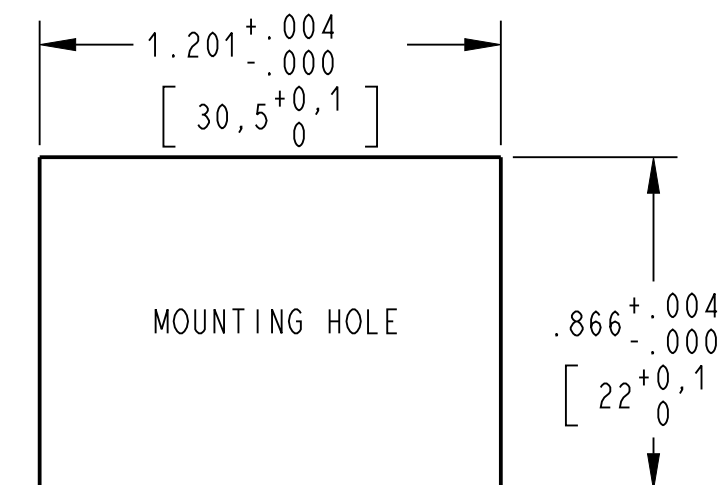
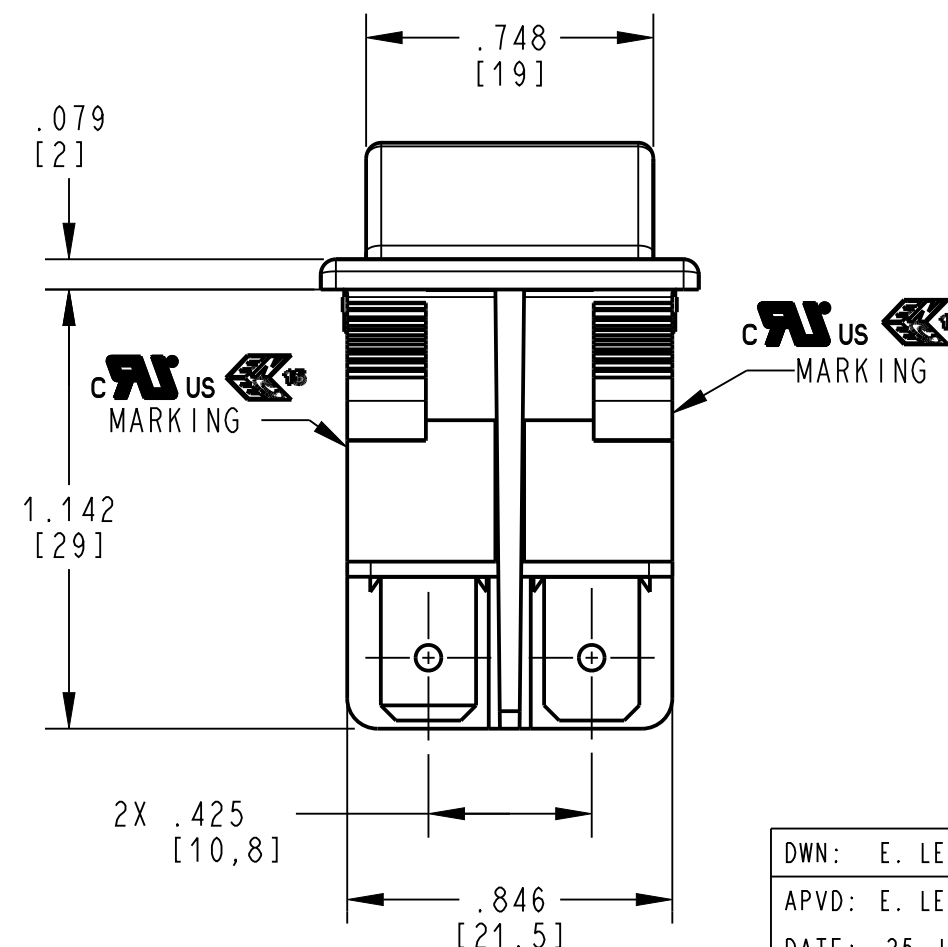
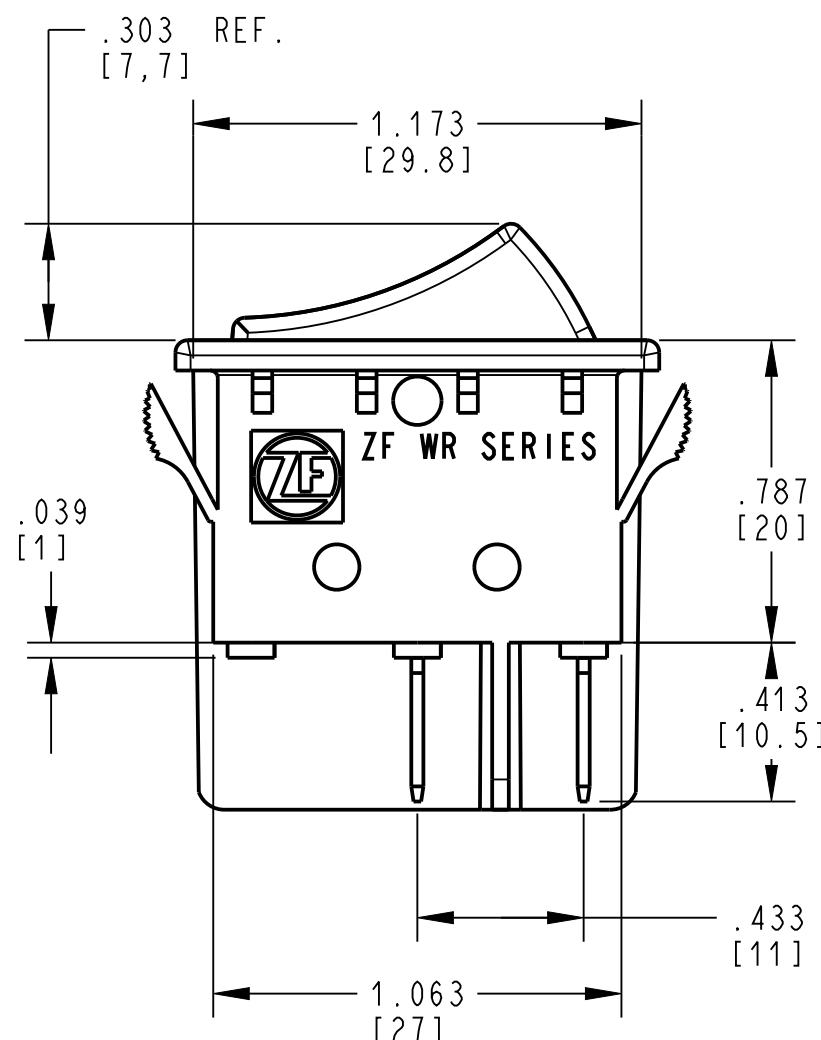
RATING TO BE MARKED ON ROCKERS:  
16A, 125/250 VAC 1/4HP  
16A, 250VAC 1/4HP  
3/4HP 250 VAC.

16(4)A, 250VAC T125/55 10E3

16(4)A 125/250V~

DIELECTRIC WITHSTAND VOLTAGE: 1000VAC FOR 1 MINUTE.  
INSULATION RESISTANCE: 100M  $\Omega$  MIN. AT 500 VDC  
INITIAL CONTACT RESISTANCE: 20m  $\Omega$  MAX.

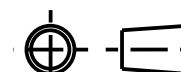
TERMINALS: .031 $\pm$ .002[0.8 $\pm$ 0.03]X  
.248 $\pm$ .004/- .002[6.3 $\pm$ 0.1/-0.05]  
HOLE  $\varnothing$ .067 $\pm$ .004[1.7 $\pm$ 0.1].



RECOMMENDED PANEL THICKNESS  
.030 TO .049  
[0.75mm TO 1.25mm]

DWN: E. LESLIE  
APVD: E. LESLIE  
DATE: 25-JUN-25

THIRD ANGLE PROJECTION



PROJECT/ CSR  
N/A

CONFIDENTIAL AND PROPRIETARY:  
ALL INFORMATION OR INVENTIONS CONTAINED IN THIS  
DOCUMENT OR DERIVED FROM THE INFORMATION THERE  
IN IS OWNED BY ZF ELECTRONIC SYSTEMS, AND IS  
CONFIDENTIAL AND PROPRIETARY. REVIEW OR  
POSSESSION OF THIS DOCUMENT INDICATES AGREEMENT  
THAT SUCH INFORMATION AND INVENTIONS WILL NOT BE  
DISCLOSED, REPRODUCED OR OTHERWISE USED IN ANY  
WAY WITHOUT EXPRESS WRITTEN PERMISSION FROM AN  
AUTHORIZED REPRESENTATIVE OF ZF ELECTRONIC  
SYSTEMS.

TOLERANCE UNLESS SPECIFIED

DWG UNITS	X.XX	X.XXX	ANGLES
INCHES	$\pm$ 0.02	$\pm$ 0.012	$\pm$ 5.0 °



ZF Electronic Systems

PLEASANT PRAIRIE, WISCONSIN U.S.A.

NAME / DESCRIPTION

SPECIFICATION DRAWING

B ITEM NO. WRG32F2FBBNN

SCALE: 2:1 SH 1 OF 1

A		2025-06-25	ELL	ELL
REV	ECO NO.	DATE	PREP	APVD