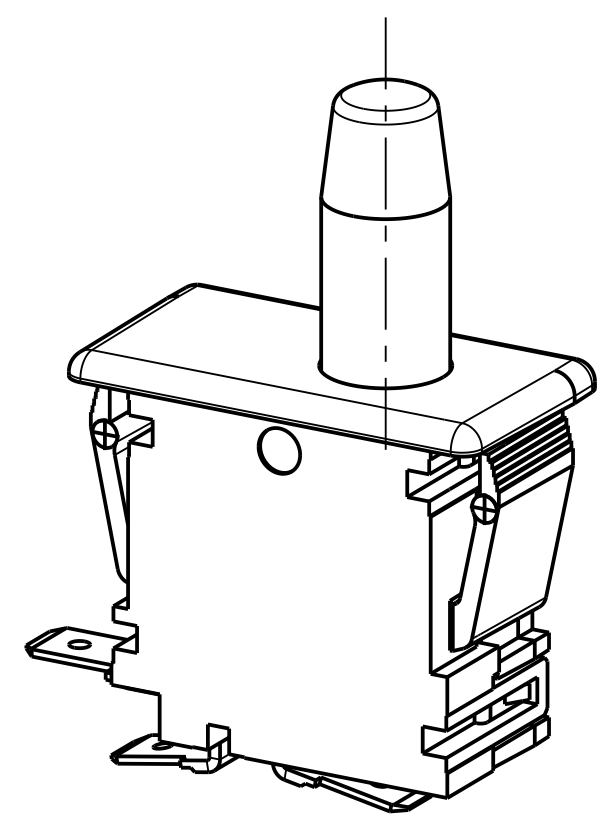
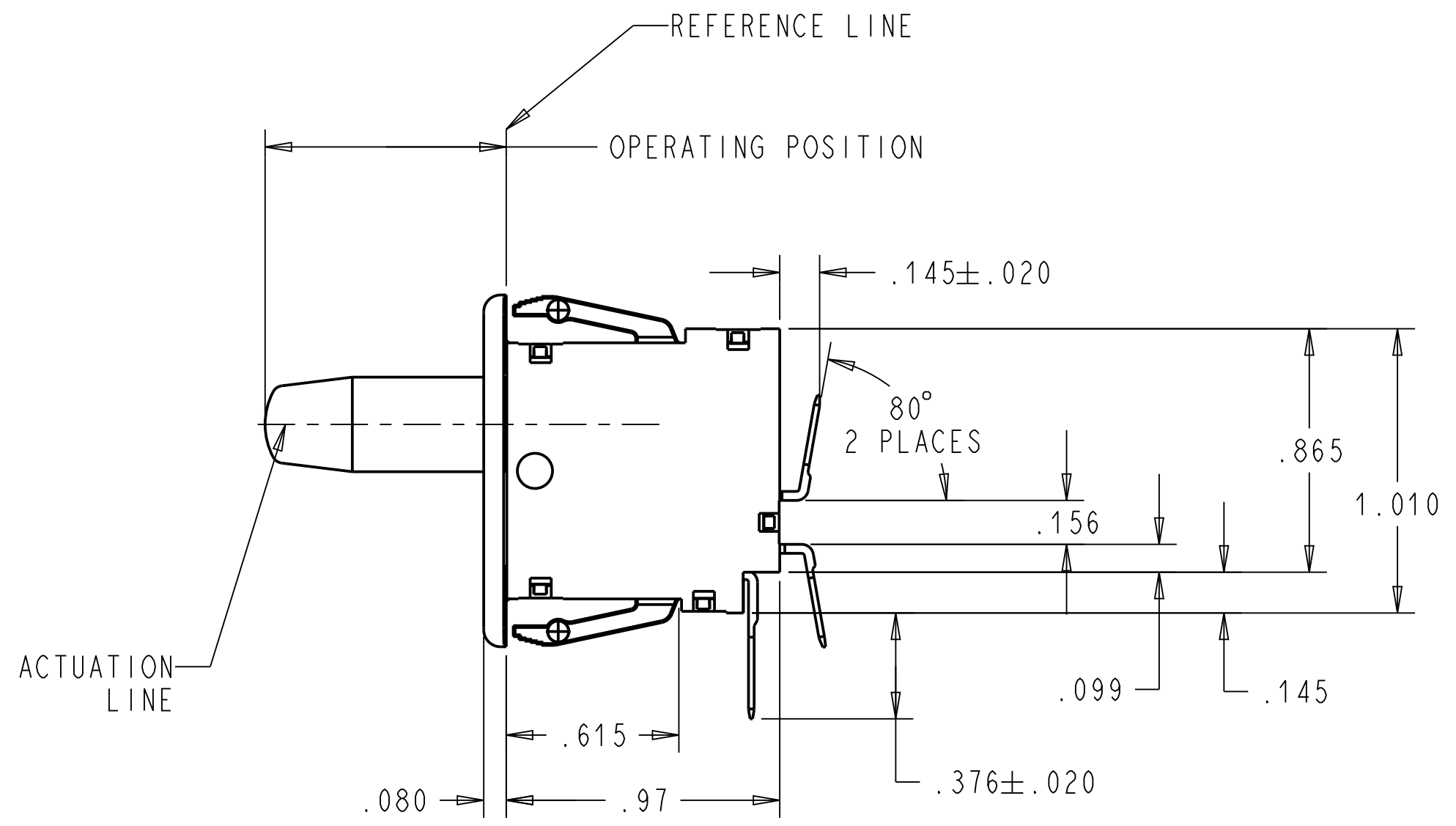
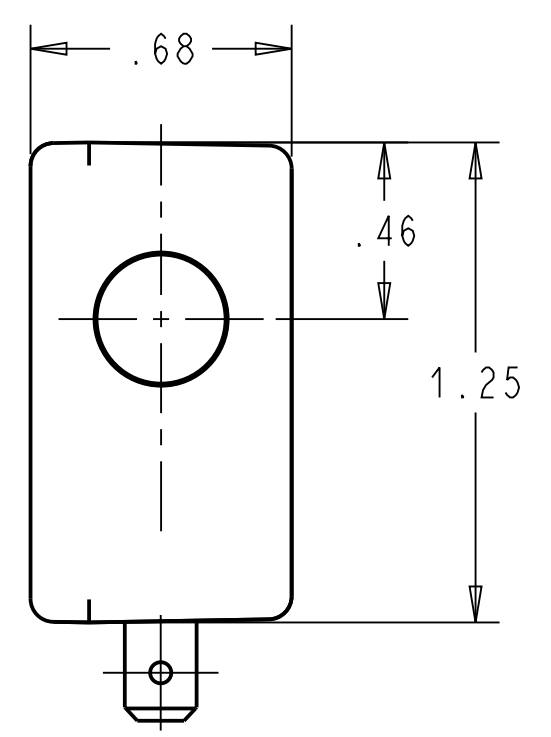


PANEL CUTOUT DETAIL
RECOMMENDED
PANEL THICKNESS
.045-.100



NOTES: (UNLESS OTHERWISE SPECIFIED)

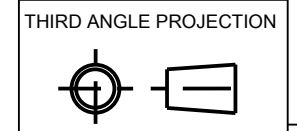
- SWITCH CHARACTERISTICS
 REST POSITION .845 TO .905
 PRE-TRAVEL .125 MAX
 OPERATING POSITION .720 TO .820
 OVER TRAVEL .375 MIN.
 MOVEMENT DIFF. .045 MAX.
 OPERATING FORCE grams 425 MAX.
 RELEASE FORCE grams 85 MIN.

 BUTTON POSITION
 AT FULL OVERTRAVEL. .358 MAX.

ALL CHARACTERISTICS ARE TAKEN AT THE ACTUATION LINE AND MEASURED FROM THE REFERENCE LINE.

- UL** ELECTRICAL RATING
 10 A, 125/250 VAC
 1/3HP, 125/250 VAC.
- TERMINALS:
 ARE .187 WIDTH x .020 THICKNESS.
- RECOGNIZED TO U.S. AND CANADIAN REQUIREMENTS UNDER THE COMPONENT RECOGNITION PROGRAM OF UNDERWRITERS LABORATORIES, INC.
- TEMPERATURE RATINGS: -40°C TO 85°C
- COLORS: FACEPLATE: WHITE
 BUTTON: WHITE

DWN: C. RAMOS
 APVD: A. Carrilo
 DATE: 13-Feb-08



PLEASANT PRAIRIE, WISCONSIN U.S.A.
 NAME / DESCRIPTION
SPECIFICATION DRAWING

H	Z000375235	06-Sep-16	JPD	ELL	PROJECT/ CSR	DWG UNITS	X.XX	X.XXX	ANGLES	C	ITEM NO.	0E69-00A0
REV	ECO NO.	DATE	PREP	APVD	4000000138	INCH	± 0.02	± 0.015	± 5.0°	SCALE:	2:1	SH 1 OF 1

ORIGINAL ON PROJE