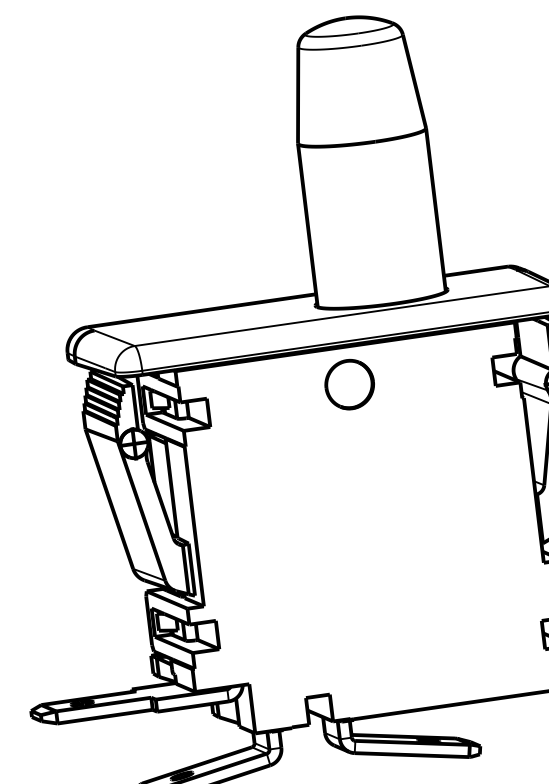
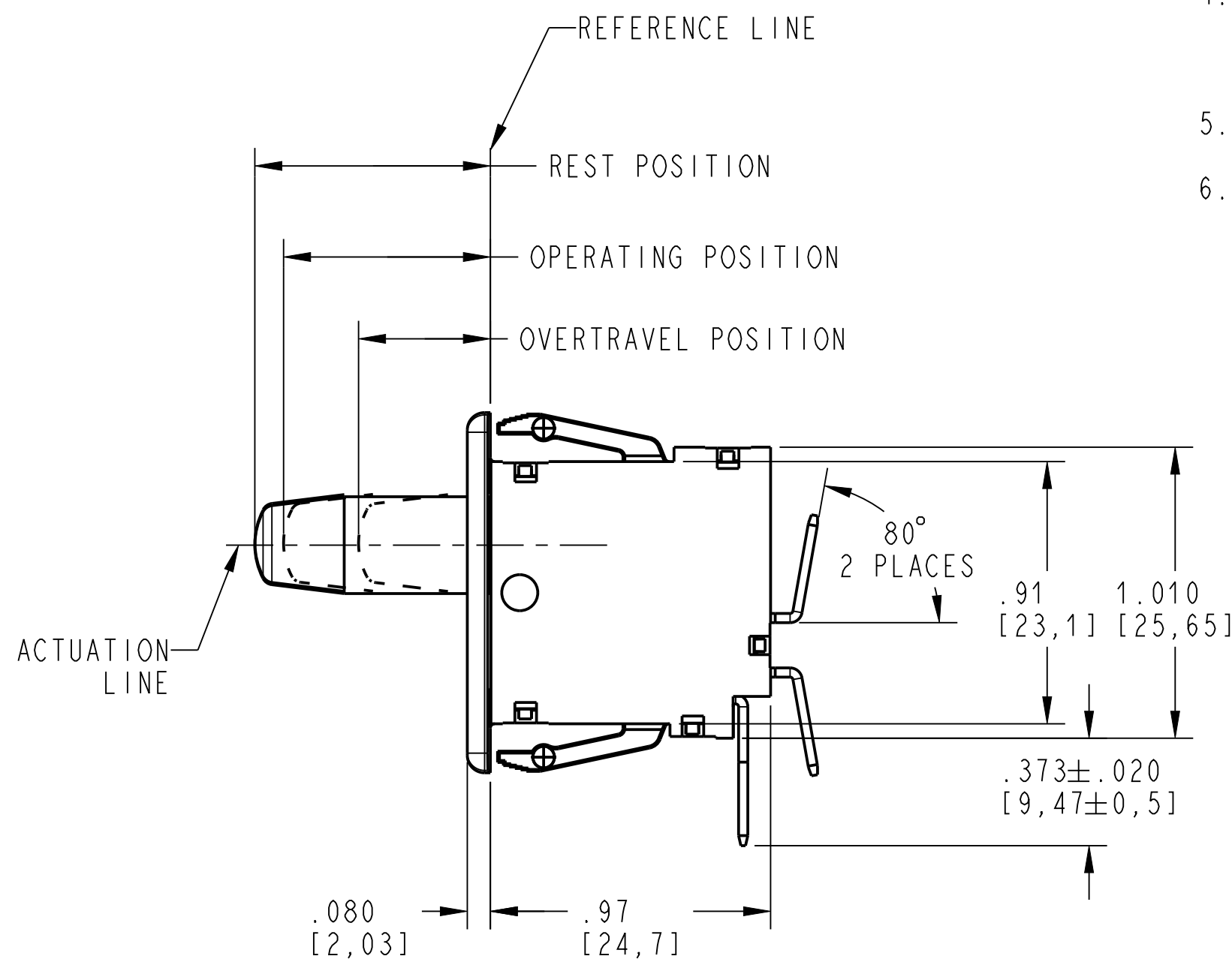
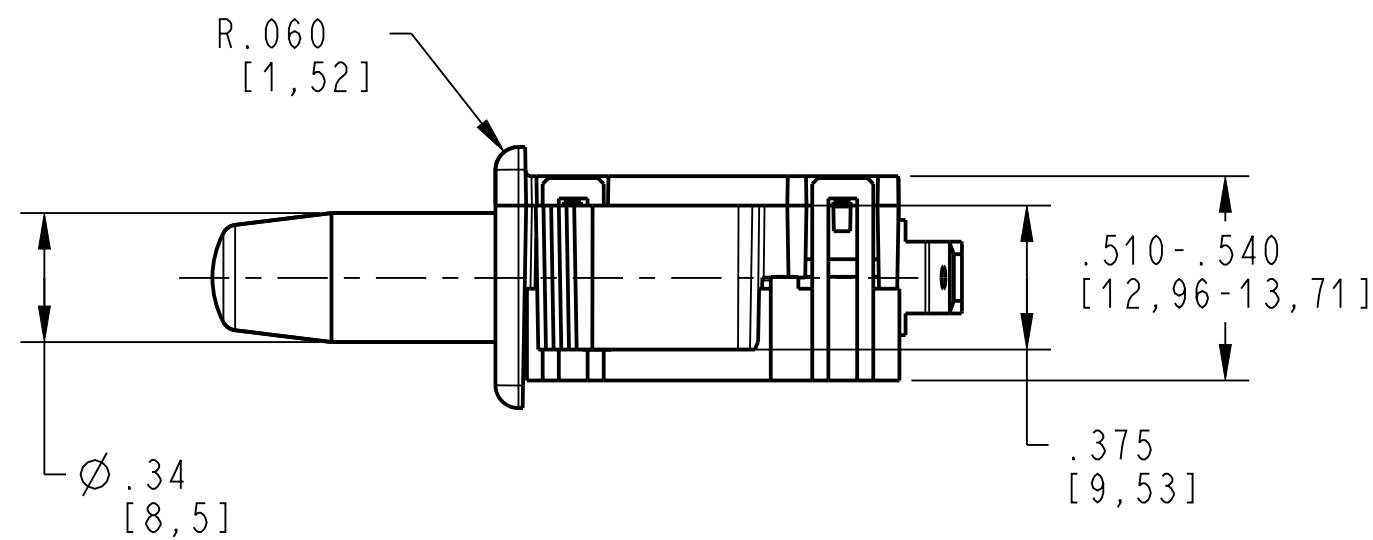
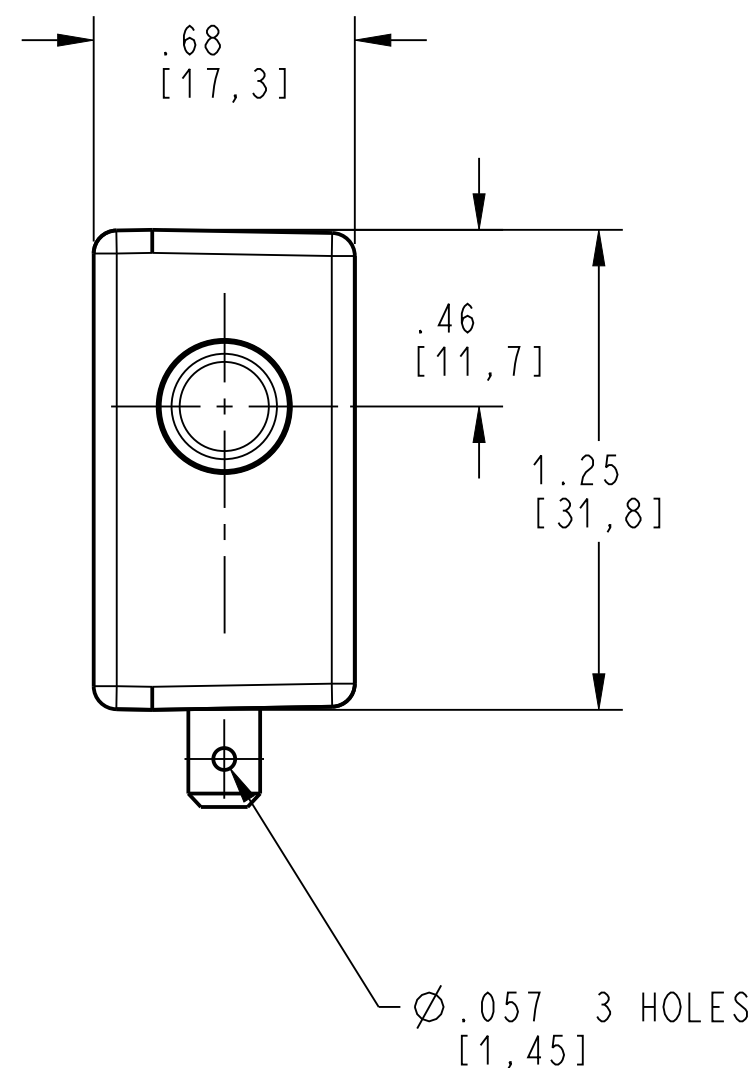


PANEL CUTOUT DETAIL
RECOMMENDED
PANEL THICKNESS
.045-.100



NOTES: (UNLESS OTHERWISE SPECIFIED)

- SWITCH CHARACTERISTICS:
 REST POSITION: .845 [21,46] TO .905 [22,99]
 PRETRAVEL: .125 [3,18] MAX.
 OPERATING POSITION: .720 [18,29] TO .820 [20,83]
 OVER-TRAVEL: .375 [9,53] MIN.
 MOVEMENT DIFFERENTIAL: .045 [1,14] MAX.
 OPERATING FORCE grams: 425 MAX.
 RELEASE FORCE grams: 85 MIN.

BUTTON POSITION
 AT FULL OVERTRAVEL: .358 [9,09] MAX.

ALL CHARACTERISTICS ARE TAKEN AT THE ACTUATION LINE AND MEASURED FROM THE REFERENCE LINE.

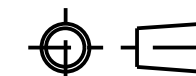
- UL** ELECTRICAL RATING:
 10 A, 125/250 VAC.
 1/3HP, 125/250 VAC.

10(4)A 250V, 50E3. 40T85

- TERMINALS:
 ARE .187 WIDTH x .032 THICKNESS.
- RECOGNIZED TO U.S. AND CANADIAN REQUIREMENTS UNDER THE COMPONENT RECOGNITION PROGRAM OF UNDERWRITERS LABORATORIES, INC.
- TEMPERATURE RATINGS: -40°C TO 85°C
- COLORS: FACEPLATE: WHITE
 COVER: WHITE
 BUTTON: WHITE

DWN: T. KULACK
 APVD: BEB
 DATE: 25-Sep-73

THIRD ANGLE PROJECTION



ZF Electronic Systems

PLEASANT PRAIRIE, WISCONSIN U.S.A.

NAME / DESCRIPTION

SPECIFICATION DRAWING

G	Z000375239	2025-03-25	JPD	ELL
REV	ECO NO.	DATE	PREP	APVD

PROJECT/ CSR	DWG UNITS	X.XX	X.XXX	ANGLES
4000000138	INCHES	± 0.02	± 0.015	$\pm 5.0^\circ$

C	ITEM NO.	OF69-00A0
SCALE:	2:1	SH 1 OF 1

ORIGINAL ON PROJE