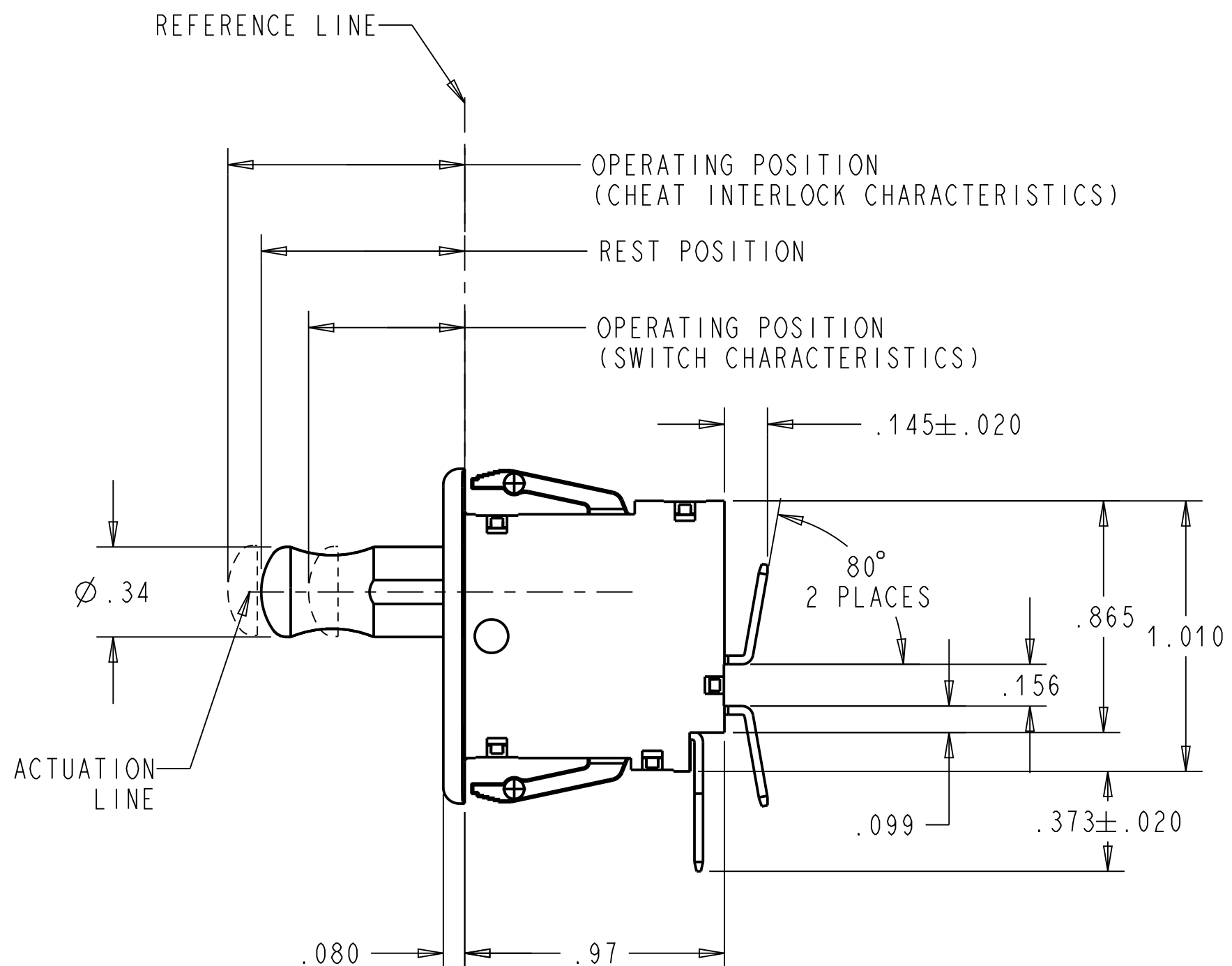
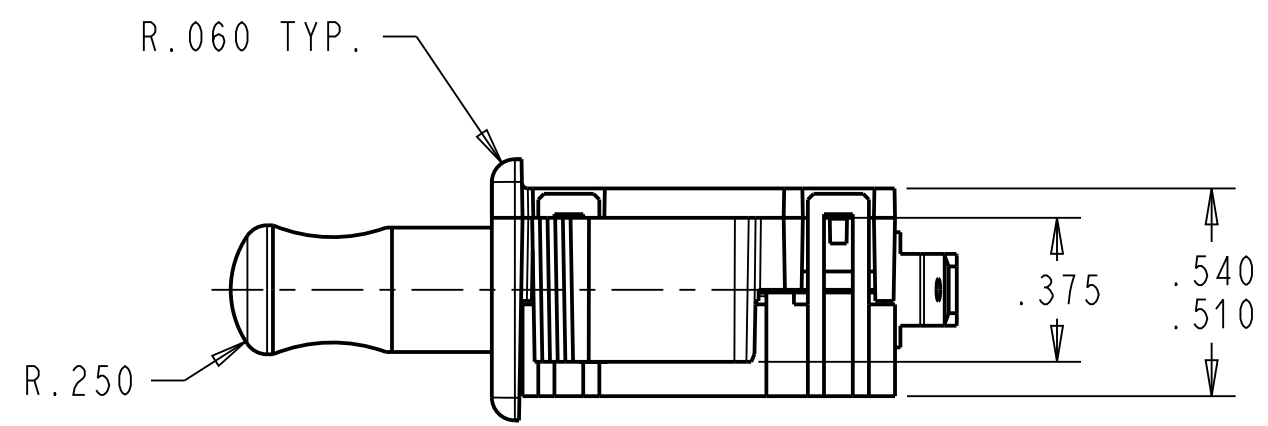
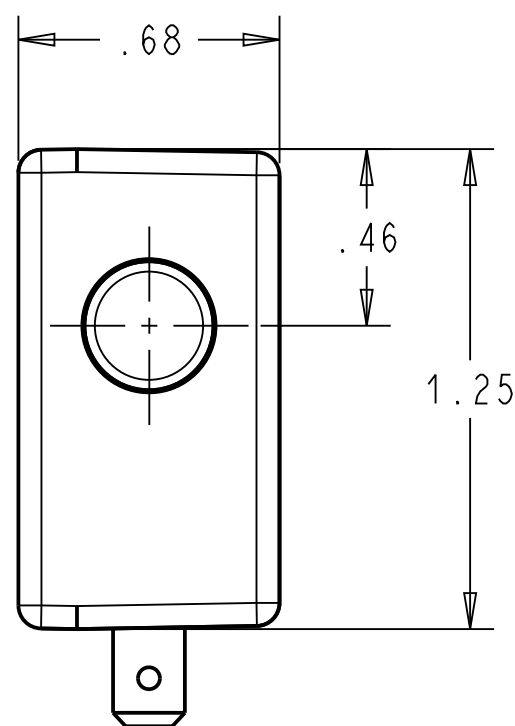


PANEL CUTOUT DETAIL  
RECOMMENDED  
PANEL THICKNESS  
.045 - .100



NOTES (UNLESS OTHERWISE SPECIFIED):

1. SWITCH CHARACTERISTICS:

REST POSITION:	.730 TO .790
PRETRAVEL:	.125 MAX.
OPERATING POSITION:	.610 TO .710
OVER-TRAVEL:	.100 MIN.
MOVEMENT DIFF:	.045 MAX.
OPERATING FORCE grams:	425 MAX.

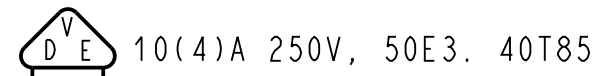
BUTTON POSITION AT FULL OVERTRAVEL:	.520 MAX.
-------------------------------------	-----------

ALL CHARACTERISTICS ARE TAKEN AT THE ACTUATION LINE AND MEASURED FROM THE REFERENCE LINE.

CHEAT INTERLOCK CHARACTERISTICS:

REST POSITION:	.730 TO .790
PRETRAVEL:	.125 MAX.
OPERATING POSITION:	.800 TO .900
OVER-TRAVEL:	.050 MIN.
MOVEMENT DIFF:	.060 MAX.
FULL OVERTRAVEL:	.980 MAX.
OPERATING FORCE grams:	585 MAX.

2. **UL** ELECTRICAL RATING  
10 A, 125/250 VAC  
1/3 HP, 125/250VAC.

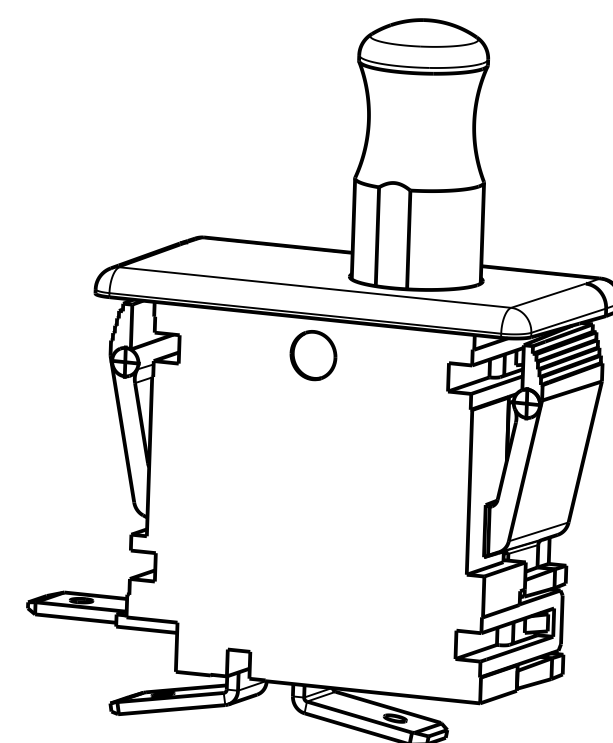


3. TERMINALS:  
ARE .187 WIDTH x .032 THICKNESS.

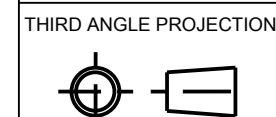
4. RECOGNIZED TO U.S. AND CANADIAN REQUIREMENTS UNDER THE COMPONENT RECOGNITION PROGRAM OF UNDERWRITERS LABORATORIES, INC.

5. TEMPERATURE RATING: -40°C TO +85°C

7. COLORS:  
FACEPLATE WHITE  
BUTTON WHITE



DWN: JML  
APVD: CJD  
DATE: 14-Jun-94



PLEASANT PRAIRIE, WISCONSIN U.S.A.

NAME / DESCRIPTION  
SPECIFICATION DRAWING

D	Z000375239	19-Aug-16	JPD	ELL	PROJECT/ CSR	DWG UNITS	X.XX	X.XXX	ANGLES	C	ITEM NO.	OF69-30A0
REV	ECO NO.	DATE	PREP	APVD	4000000138	INCHES	± 0.02	± 0.015	± 5.0°	SCALE:	2:1	SH 1 OF 1

ORIGINAL ON PROJE