

```

1. *SWITCH CHARACTERISTICS
    REST POSITION                .842 MAX.
    PRE-TRAVEL                 .330 MAX.
    OPERATING POSITION          .406 TO .530
    OVER TRAVEL                .156 MIN.
    MOVEMENT DIFF.
    EACH POLE                  .050 MAX.
    OPERATING FORCE grams      425 MAX.
    RELEASE FORCE grams        50 MIN.

```

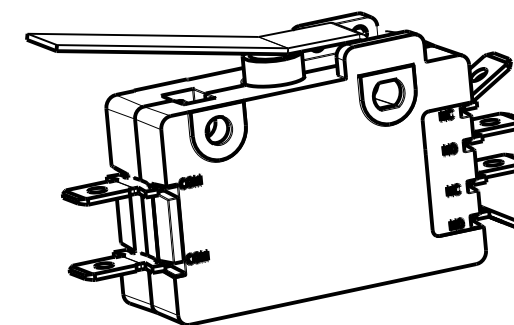
ALL CHARACTERISTICS ARE TAKEN AT THE
ACTUATION LINE AND MEASURED FROM
THE REFERENCE LINE.

2. **us** ELECTRICAL RATING
20A, 125/250 VAC
1 HP, 125VAC
2 HP, 250VAC

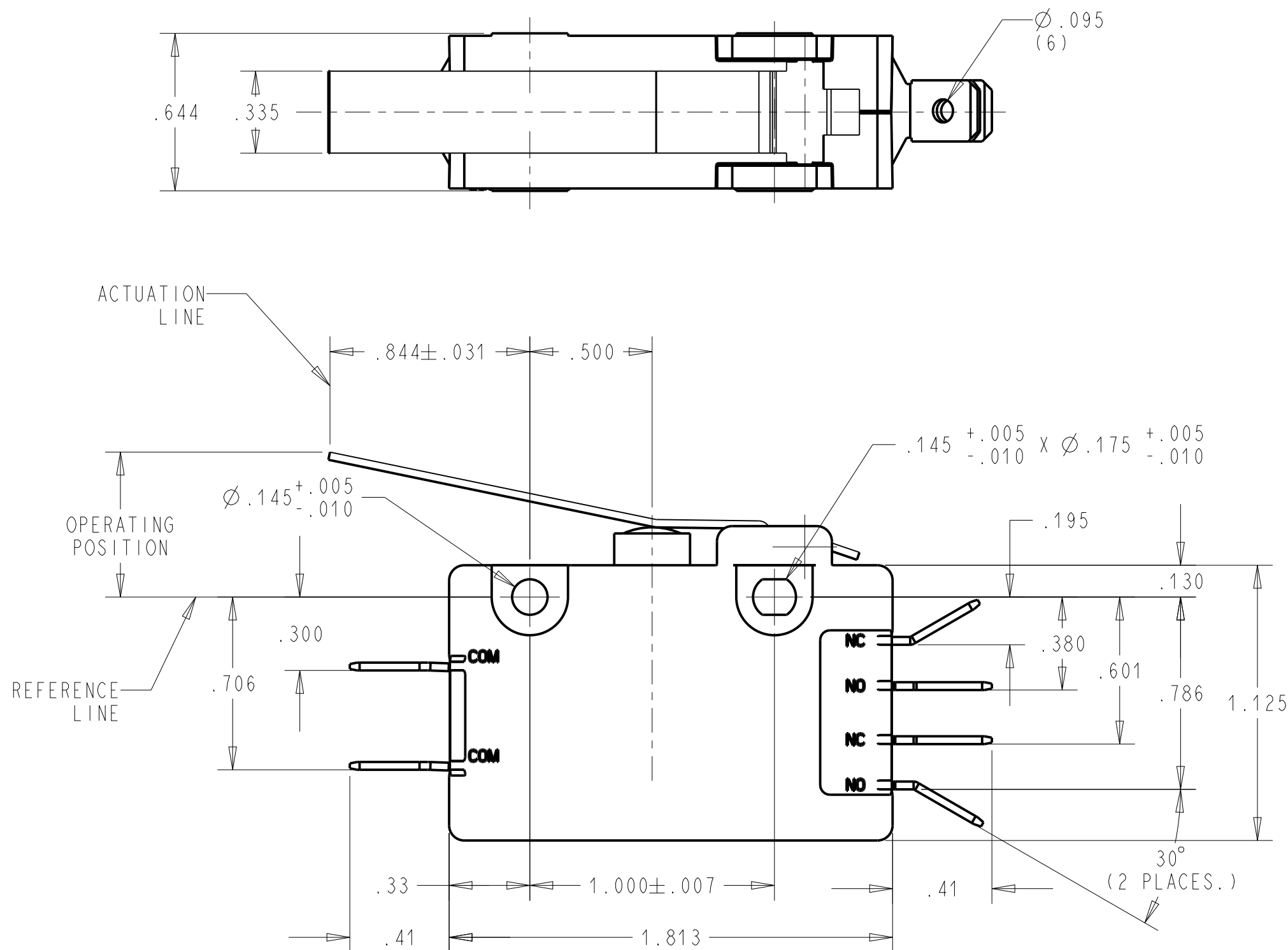
3. TERMINALS: .250 WIDE x .032 THICK.


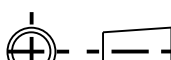
4. TEMPERATURE RATING -40°C TO +105°C

5. RECOGNIZED TO U.S. AND CANADIAN
REQUIREMENTS UNDER THE COMPONENT
RECOGNITION PROGRAM OF
UNDERWRITERS LABORATORIES, INC.



SHOWN IN A NON CLINCHED STATE
SCALE 1.000



DWN: RAK							ZF Electronic Systems			
APVD: RAK					11200 88th AVE. PLEASANT PRAIRIE, WI 53158					
DATE: 03/24/71					NAME / DESCRIPTION					
THIRD ANGLE PROJECTION					SPECIFICATION DRAWING					
	TOLERANCE UNLESS SPECIFIED				B	ITEM NO. 0E20-00H0				
PROJECT/ CSR	DWG	UNITS	X.XX	X.XXX	ANGLES					
4000000138	INCH	± 0.02	± 0.015	± 5.0 °	SCALE: 2.000			SH 1 OF 1		